



Results of the September 2011 Criminal Justice Estimating Conference

Prepared by the Florida Legislature, Office of Economic and Demographic Research for
the House Justice Appropriations Subcommittee, October 19, 2011

CJEC met on February 21, 2011 and again on September 15, 2011.

In February, CJEC had projected that FY 10-11 admissions would decline by 6.2% from FY 09-10.

For the FY 10-11 fiscal year, admissions were 5.8% lower than in FY 09-10.

Going into the September CJEC, it appeared that admissions needed to be adjusted downward from the February CJEC.

September's CJEC projected prison
admissions compared to February 2011

CJEC :

- **1,252 for FY 11-12**
- **1,707 for FY 12-13**
- **2,008 for FY 13-14**

FY 11-12 admissions now projected to be
32,907 -- 7.6% below FY 10-11

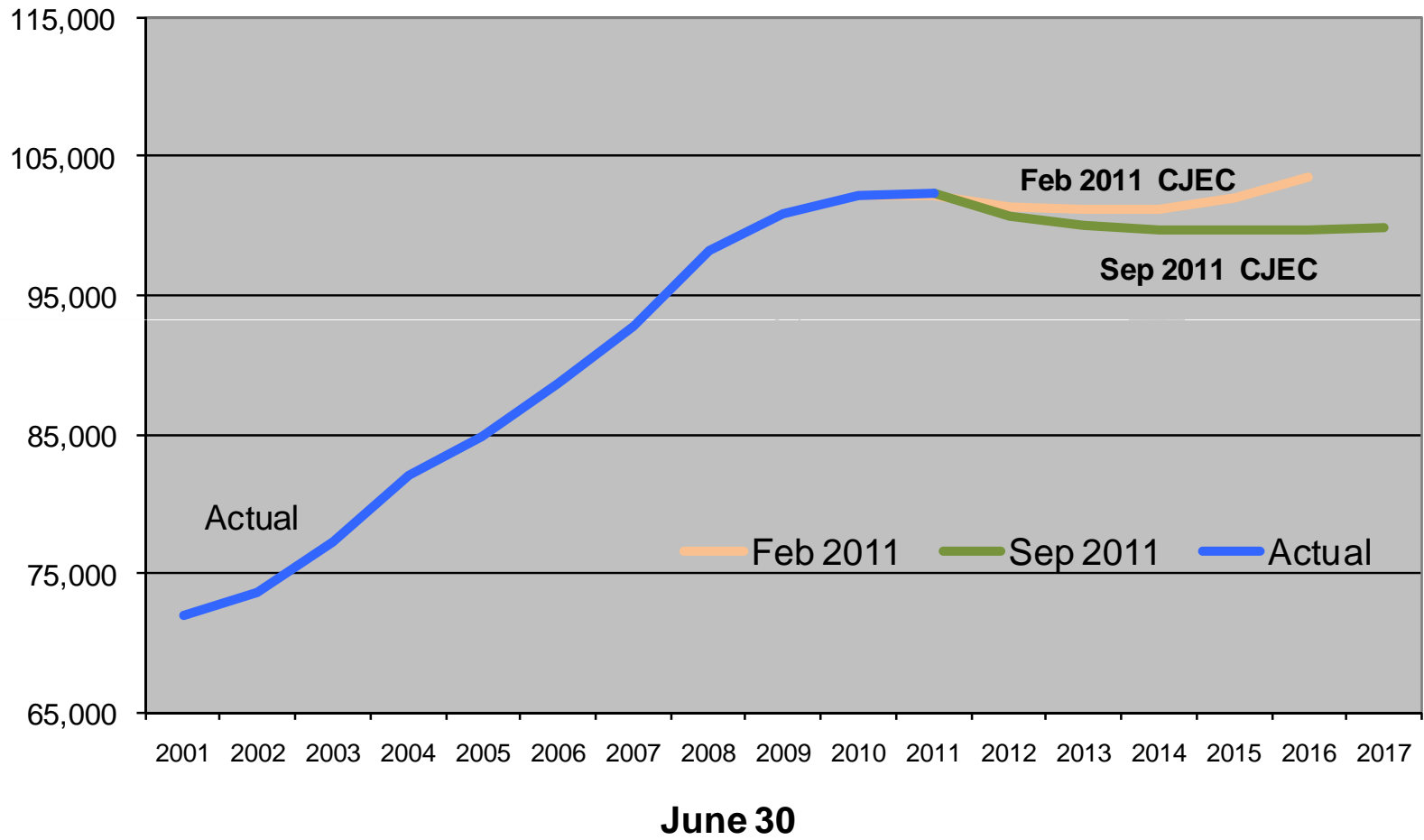
September's CJEC projected prison population compared to February's CJEC:

June 30th prison population:

- **616 for FY 11-12**
- **1,138 for FY 12-13**
- **1,591 for FY 13-14**

June 30, 2012 prison population projection
100,753

Prison Population on June 30: Actual and Projected-- February 2011 and September 2011 CJECs



Why were projections lowered in September?

Review of criminal justice indicators suggest that trends first observed in 2008 are continuing.

These trends will result in smaller numbers of new commitments coming to prison than previously anticipated.

Two-Year Declines

■ Crime Trends

- Index crimes
- Crime rate
- Arrests

■ Judicial System Trends

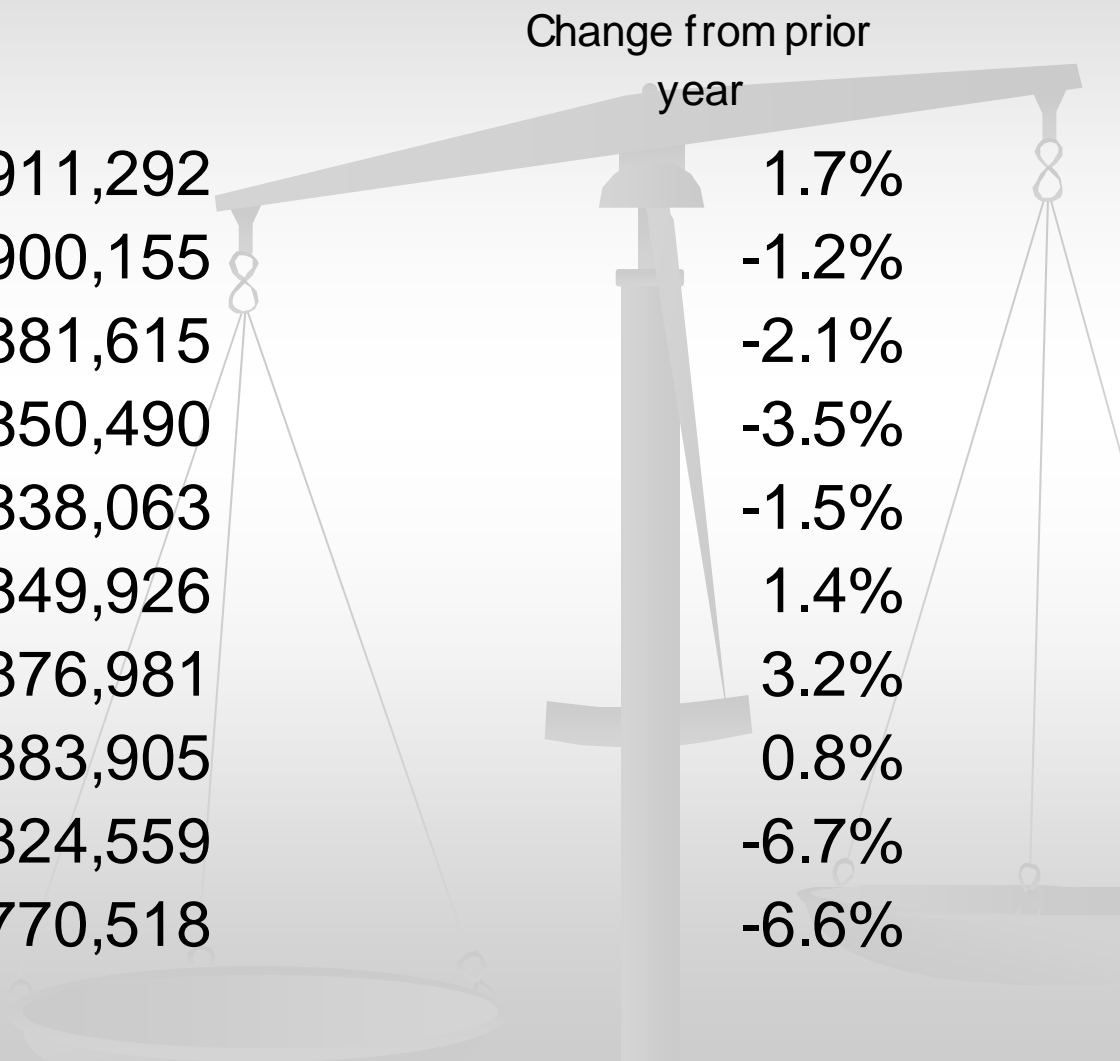
- Felony filings
- Guilty dispositions

■ New Commitments to Prison

■ Year-and-a Day Sentences



TOTAL INDEX CRIMES

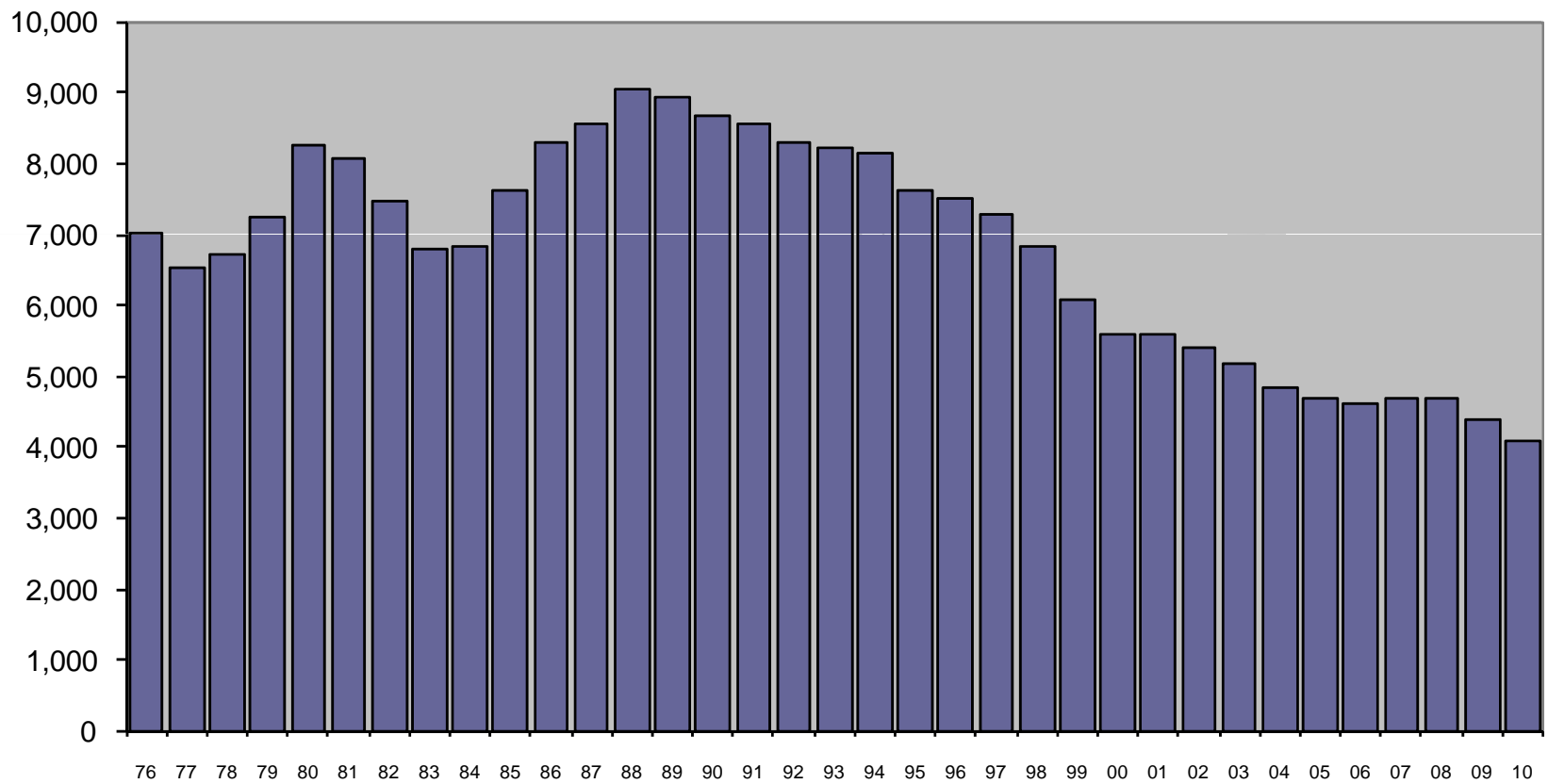


Change from prior year

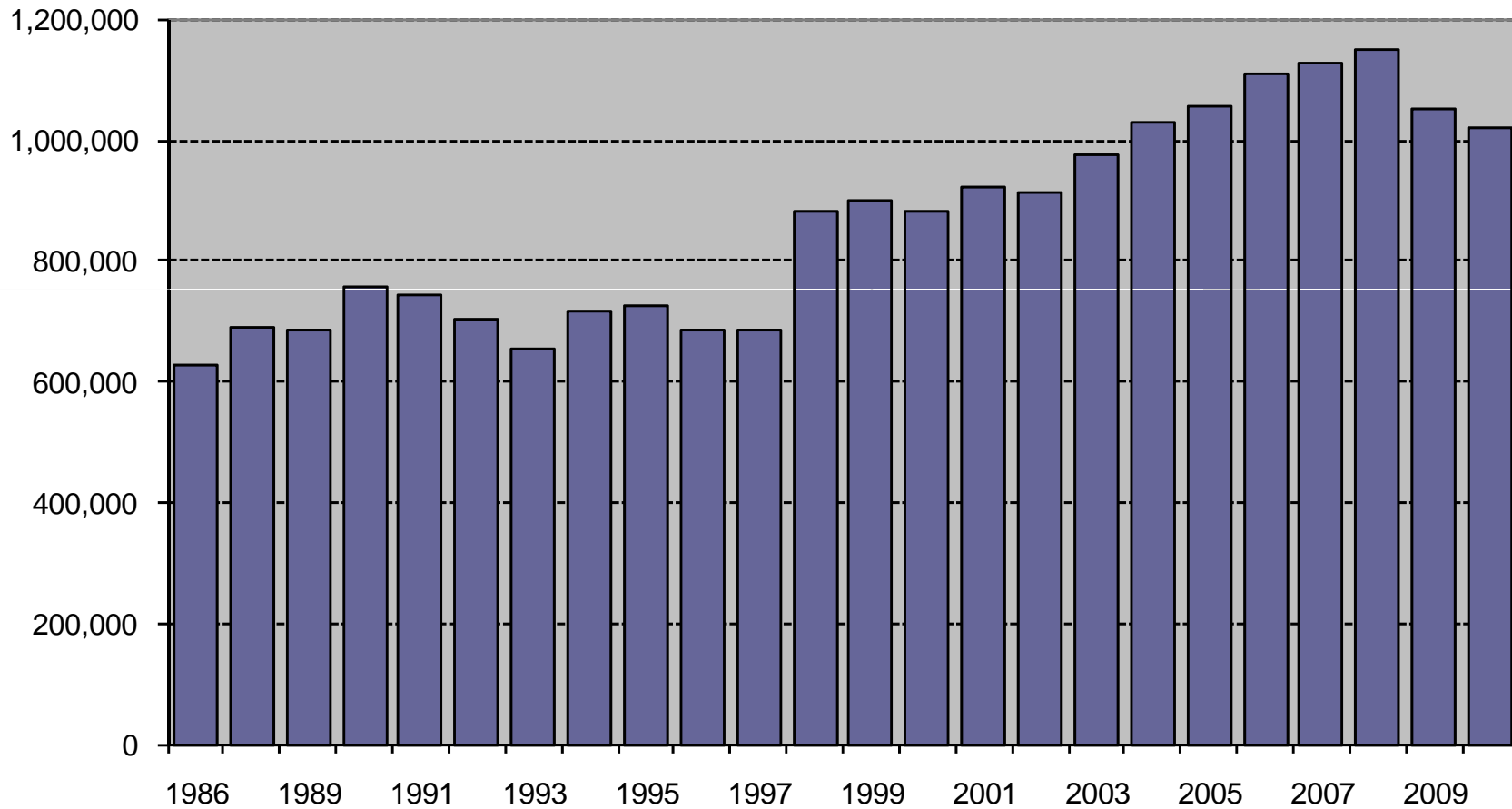
2001	911,292	1.7%
2002	900,155	-1.2%
2003	881,615	-2.1%
2004	850,490	-3.5%
2005	838,063	-1.5%
2006	849,926	1.4%
2007	876,981	3.2%
2008	883,905	0.8%
2009	824,559	-6.7%
2010	770,518	-6.6%

CRIME RATE

Index Crimes per 100,000 Population



TOTAL ARRESTS



Source of data changed in 1996 to fingerprint cards and in 1998 to aggregate reports from Law Enforcement Agencies. Arrest data are not available for 1988.

RECENT TRENDS IN FELONY FILINGS AND GUILTY DISPOSITIONS

Felony Filings	
Number	Percent Change

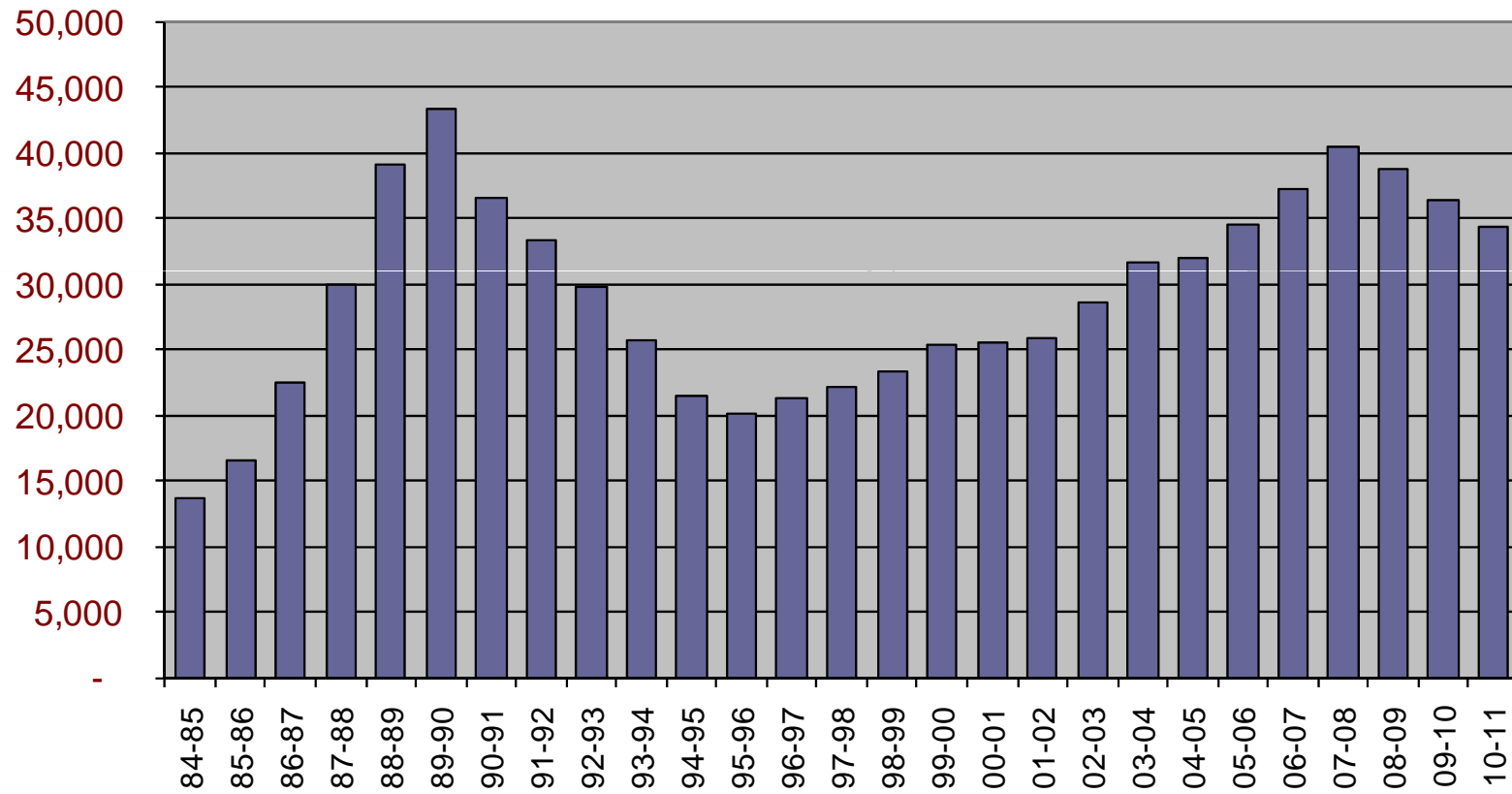
Guilty Dispositions	
Number	Percent Change

2001	184,571	-0.8%	142,907	2.9%
2002	184,295	-0.1%	143,253	0.2%
2003	187,379	1.7%	147,707	3.1%
2004	194,863	4.0%	151,544	2.6%
2005	208,540	7.0%	159,008	4.9%
2006	220,757	5.9%	171,087	7.6%
2007	230,822	4.6%	183,993	7.5%
2008	224,420	-2.8%	185,950	1.1%
2009	204,479	-8.9%	159,764	-14.1%
2010	197,826	-3.3%	146,384	-8.4%

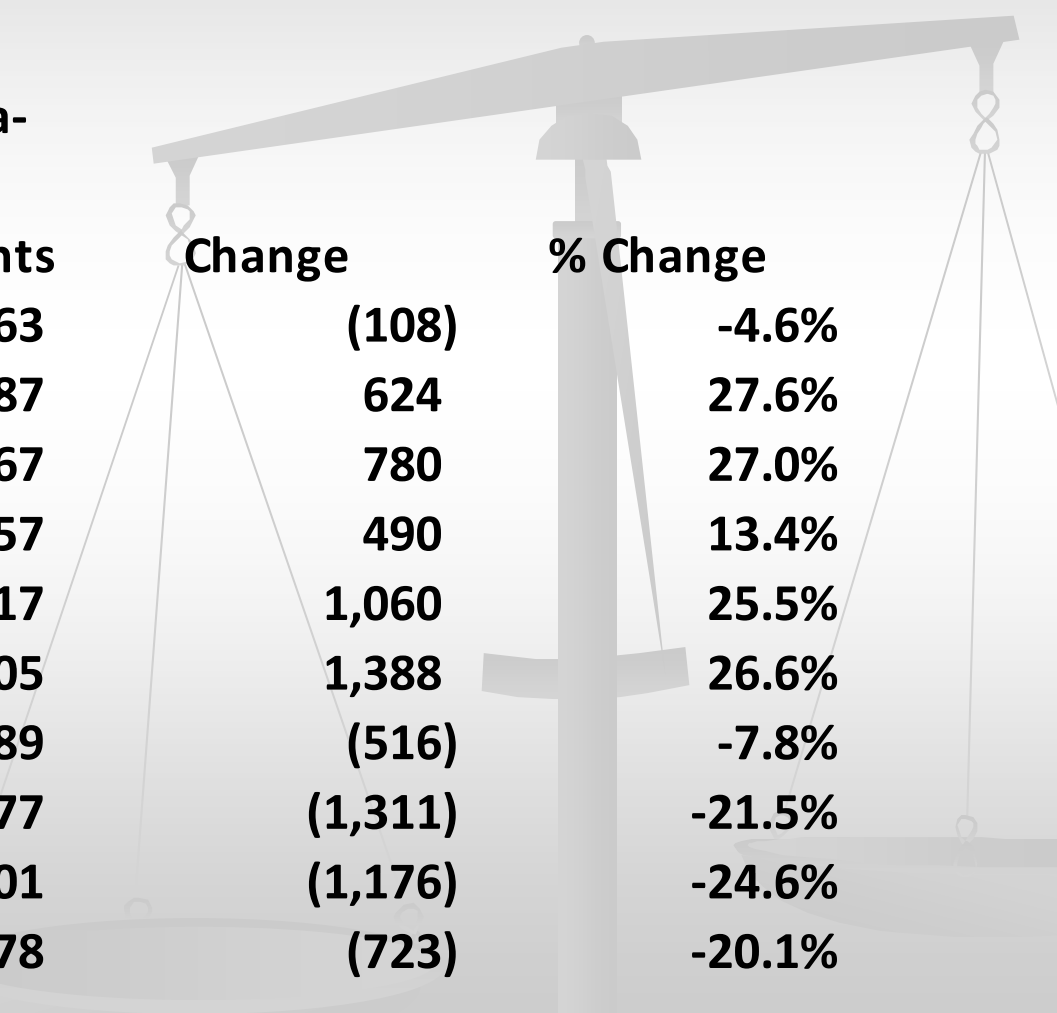
Jan-Jun 2010 ¹	98,124		75,677	
---------------------------	--------	--	--------	--

Jan-Jun 2011 ²	98,833	0.7%	73,335	-3.1%
---------------------------	--------	------	--------	-------

New Commitments



Year-and-a-Day New Commitments to Prison



	Year-and-a-Day New Commitments	Change	% Change
FY 01-02	2,263	(108)	-4.6%
FY 02-03	2,887	624	27.6%
FY 03-04	3,667	780	27.0%
FY 04-05	4,157	490	13.4%
FY 05-06	5,217	1,060	25.5%
FY 06-07	6,605	1,388	26.6%
FY 07-08	6,089	(516)	-7.8%
FY 08-09	4,777	(1,311)	-21.5%
FY 09-10	3,601	(1,176)	-24.6%
FY 10-11	2,878	(723)	-20.1%

For Additional Information

Florida Legislature, Office of Economic and Demographic
Research

edr.state.fl.us