

The Community College Enrollment Estimating Conference met November 4, 2008 to consider community college lower-level enrollment estimates for FY 2008-09, which are used for the FY 2009-10 appropriation. Based on Summer Term and Fall Beginning-of-Term enrollment, the conference adopted an estimate of 326,536.0 FTE using a 30-hour FTE. (The 40-hour FTE yields a count of 255,473.4 FTE.)

Florida College System
FTE Enrollment: Funded-30, Lower Level

2007-08 FTE-3

	A & P	Postsec. Voc.	College Prep.	EPI	Postsec. Adult Voc.	Apprentice	CWE	Adult Basic	Adult Sec./GED Prep.	Voc. Prep.	Total
Brevard	6333.3	2312.9	781.9	58.5	687.3	527.0	124.1	0.0	0.0	0.0	10825.0
Broward	12874.4	5745.3	3545.0	80.3	505.4	0.0	267.8	0.0	0.0	0.0	23018.2
Central Florida	2627.3	998.1	476.8	50.1	477.1	0.0	177.7	66.0	10.5	2.3	4885.9
Chipola	958.0	211.0	112.6	0.0	196.8	9.0	39.8	0.0	0.0	9.8	1537.0
Daytona	5675.0	2382.9	1068.3	84.8	757.1	641.4	68.7	931.6	410.0	22.8	12042.6
Edison	5277.4	1742.1	905.8	106.7	11.7	0.0	50.8	0.0	0.0	0.0	8094.5
Fla CC At Jax	10645.9	3467.8	1514.2	151.2	1040.4	576.5	3666.3	1099.2	263.6	38.9	22464.0
Florida Keys	450.7	234.1	48.9	6.4	25.8	0.0	23.8	0.0	0.0	0.0	789.7
Gulf Coast	2660.0	994.8	347.0	54.0	288.3	152.1	267.1	67.0	1.3	0.0	4831.6
Hillsborough	9587.5	2789.2	1986.7	128.8	369.7	1716.1	227.6	61.5	13.6	0.0	16880.7
Indian River	5007.7	2685.5	590.5	116.7	1170.4	1019.5	14.3	1167.2	326.3	0.0	12098.1
Lake City	1265.1	378.9	164.6	15.4	396.5	0.0	111.4	0.6	0.5	2.7	2335.7
Lake Sumter	1616.2	608.9	269.1	40.1	0.0	0.0	46.1	0.0	0.0	0.0	2580.4
Manatee	5871.7	615.9	992.0	83.9	0.0	0.0	109.8	39.8	4.5	0.0	7717.6
Miami Dade	28626.9	8947.2	5693.3	76.6	894.7	703.6	1641.5	3276.4	1200.2	1778.5	52838.9
North Florida	509.0	155.7	110.2	14.1	102.7	0.0	52.5	9.8	1.7	0.7	956.4
Northwest FLA	3599.0	689.2	311.5	76.8	171.7	0.0	37.9	161.0	41.6	0.0	5088.7
Palm Beach	11153.3	1307.9	1401.5	66.8	914.0	1545.3	235.4	0.0	0.0	0.0	16624.2
Pasco-Hernando	3076.6	1386.6	573.0	80.4	351.4	0.0	47.2	6.6	0.1	0.0	5521.9
Pensacola	4931.2	1749.6	526.8	59.4	375.1	0.0	49.6	308.0	375.2	14.6	8389.5
Polk	3163.5	1230.0	481.3	129.4	105.0	0.0	203.9	0.0	0.0	0.0	5313.1
St. Johns River	2301.6	784.3	304.8	86.2	127.0	399.6	42.6	122.1	22.2	0.0	4190.4
St. Petersburg	9961.4	4074.7	1575.6	0.0	143.9	0.0	330.7	0.0	0.0	0.0	16086.3
Santa Fe	7892.2	2371.2	1035.5	41.8	156.7	177.7	70.6	104.3	18.6	4.8	11873.4
Seminole	5088.2	2338.4	880.0	40.4	302.4	814.5	11.1	623.7	541.9	27.9	10668.5
South Florida	1059.6	154.5	115.2	14.8	490.6	157.5	80.3	464.3	74.2	0.0	2611.0
Tallahassee	7809.1	1249.7	1050.7	26.8	285.2	0.0	863.8	90.5	79.8	0.0	11455.6
Valencia	15581.7	5294.7	2141.6	78.2	279.1	0.0	440.5	0.0	0.0	0.0	23815.8
System	175603.5	56901.1	29004.4	1768.6	10626.0	8439.8	9302.9	8599.6	3385.8	1903.0	305534.7

Florida College System
 FTE Enrollment Projections: Funded-30, Lower Level
 Division Projections With College Adjustments as of June 2008
 2008-09

	A & P	Postsec. Voc.	College Prep.	EPI	Postsec. Adult Voc.	Apprentice	CWE	Adult Basic	Adult Sec./GED Prep.	Voc. Prep.	Total
Brevard	6507.0	2377.0	803.0	61.0	710.0	541.0	127.0	0.0	0.0	0.0	11126.0
Broward	13916.0	6204.0	3838.0	86.0	579.0	0.0	325.0	0.0	0.0	0.0	24948.0
Central Florida	2889.0	1097.0	525.0	55.0	525.0	0.0	172.0	66.0	11.0	2.0	5342.0
Chipola	1002.0	225.0	102.0	0.0	226.0	9.0	40.0	0.0	0.0	11.0	1615.0
Daytona	6526.0	2685.0	1227.0	81.0	817.0	642.0	64.0	938.0	461.0	22.0	13463.0
Edison	5499.0	1814.0	944.0	111.0	12.0	0.0	53.0	0.0	0.0	0.0	8433.0
Fla CC At Jax	10485.0	3508.0	1418.0	156.0	1075.0	595.0	3747.0	1208.0	289.0	37.0	22518.0
Florida Keys	474.0	296.0	49.0	6.0	26.0	0.0	23.0	0.0	0.0	0.0	874.0
Gulf Coast	2793.0	1045.0	375.0	54.0	290.0	175.0	283.0	70.0	2.0	0.0	5087.0
Hillsborough	9911.0	2877.0	2062.0	133.0	434.0	1712.0	232.0	62.0	14.0	0.0	17437.0
Indian River	5408.0	2748.0	608.0	159.0	1196.0	1048.0	14.0	1170.0	329.0	0.0	12680.0
Lake City	1241.0	391.0	162.0	15.0	410.0	0.0	111.0	0.0	0.0	3.0	2333.0
Lake Sumter	1681.0	633.0	279.0	41.0	0.0	0.0	48.0	0.0	0.0	0.0	2682.0
Manatee	6194.0	651.0	1048.0	93.0	0.0	0.0	123.0	37.0	5.0	0.0	8151.0
Miami Dade	25599.0	9989.0	11846.0	83.0	956.0	755.0	1759.0	3523.0	1303.0	1910.0	57723.0
North Florida	510.0	157.0	112.0	14.0	130.0	0.0	42.0	10.0	2.0	0.0	977.0
Northwest FLA	3715.0	686.0	310.0	76.0	171.0	0.0	38.0	160.0	42.0	0.0	5198.0
Palm Beach	12473.0	1383.0	1576.0	77.0	868.0	1519.0	207.0	0.0	0.0	0.0	18103.0
Pasco-Hernando	3273.0	1473.0	609.0	72.0	360.0	0.0	46.0	11.0	3.0	0.0	5847.0
Pensacola	5114.0	1966.0	548.0	63.0	478.0	0.0	66.0	320.0	386.0	15.0	8956.0
Polk	3402.0	1321.0	518.0	138.0	112.0	0.0	199.0	0.0	0.0	0.0	5690.0
St. Johns River	2530.0	860.0	339.0	92.0	130.0	400.0	48.0	64.0	15.0	0.0	4478.0
St. Petersburg	10459.0	4279.0	1576.0	0.0	85.0	0.0	331.0	0.0	0.0	0.0	16730.0
Santa Fe	8127.0	2443.0	1078.0	43.0	162.0	183.0	72.0	133.0	29.0	5.0	12275.0
Seminole	5635.0	2470.0	995.0	41.0	343.0	900.0	98.0	669.0	538.0	27.0	11716.0
South Florida	1124.0	159.0	115.0	15.0	512.0	157.0	82.0	479.0	72.0	0.0	2715.0
Tallahassee	8121.0	1299.0	1072.0	10.0	296.0	17.0	994.0	101.0	90.0	0.0	12000.0
Valencia	16532.0	5622.0	2270.0	83.0	296.0	0.0	511.0	0.0	0.0	0.0	25314.0
System	181140.0	60658.0	36404.0	1858.0	11199.0	8653.0	9855.0	9021.0	3591.0	2032.0	324411.0

Florida College System
 FTE Enrollment: Funded-30, Lower Level
 Division Estimates As Of November 2008
 2008-09 FTE-1

	A & P	Postsec. Voc.	College Prep.	EPI	Postsec. Adult Voc.	Apprentice	CWE	Adult Basic	Adult Sec./GED Prep.	Voc. Prep.	Total
Brevard	6647.0	2449.0	776.0	70.0	688.0	527.0	124.0	0.0	0.0	0.0	11281.0
Broward	13682.0	6047.0	3661.0	98.0	505.0	0.0	267.0	0.0	0.0	0.0	24260.0
Central Florida	3045.0	1077.0	574.0	47.0	478.0	0.0	178.0	66.0	11.0	2.0	5478.0
Chipola	1076.0	220.0	130.0	0.0	197.0	9.0	40.0	0.0	0.0	10.0	1682.0
Daytona	6276.0	2578.0	1073.0	78.0	757.0	641.0	68.0	932.0	410.0	23.0	12836.0
Edison	5861.0	1865.0	972.0	18.0	0.0	0.0	52.0	0.0	0.0	0.0	8768.0
Fla CC At Jax	12116.0	3756.0	1596.0	226.0	1040.0	578.0	3666.0	1099.0	264.0	39.0	24380.0
Florida Keys	532.0	209.0	56.0	16.0	27.0	0.0	25.0	0.0	0.0	0.0	865.0
Gulf Coast	2710.0	1036.0	303.0	61.0	288.0	153.0	266.0	67.0	0.0	0.0	4884.0
Hillsborough	10599.0	3035.0	2179.0	185.0	371.0	1716.0	228.0	62.0	14.0	0.0	18389.0
Indian River	5549.0	2693.0	676.0	125.0	1170.0	1021.0	14.0	1167.0	327.0	0.0	12742.0
Lake City	1244.0	381.0	155.0	28.0	397.0	0.0	111.0	0.0	0.0	0.0	2316.0
Lake Sumter	1792.0	606.0	275.0	55.0	0.0	0.0	47.0	0.0	0.0	0.0	2775.0
Manatee	6513.0	561.0	1081.0	82.0	0.0	0.0	110.0	40.0	6.0	0.0	8393.0
Miami Dade	30327.0	5964.0	7702.0	86.0	895.0	705.0	1641.0	3277.0	1201.0	1779.0	53577.0
North Florida	494.0	126.0	79.0	9.0	103.0	0.0	53.0	10.0	0.0	0.0	874.0
Northwest FLA	3826.0	751.0	337.0	49.0	171.0	0.0	39.0	161.0	43.0	0.0	5377.0
Palm Beach	12593.0	1422.0	1538.0	95.0	914.0	1545.0	236.0	0.0	0.0	0.0	18343.0
Pasco-Hernando	3189.0	1609.0	648.0	165.0	350.0	0.0	47.0	12.0	5.0	0.0	6025.0
Pensacola	5035.0	1772.0	532.0	52.0	374.0	0.0	50.0	308.0	376.0	17.0	8516.0
Polk	3573.0	1373.0	566.0	306.0	104.0	0.0	204.0	0.0	0.0	0.0	6126.0
St. Johns River	2391.0	779.0	325.0	141.0	128.0	399.0	42.0	122.0	22.0	0.0	4349.0
St. Petersburg	10600.0	4179.0	1516.0	0.0	145.0	0.0	331.0	0.0	0.0	0.0	16771.0
Santa Fe	7930.0	2340.0	979.0	47.0	156.0	190.0	71.0	104.0	19.0	0.0	11836.0
Seminole	5828.0	2679.0	927.0	42.0	302.0	814.0	24.0	624.0	542.0	29.0	11811.0
South Florida	1166.0	176.0	134.0	9.0	491.0	158.0	80.0	465.0	75.0	0.0	2754.0
Tallahassee	8178.0	1237.0	1169.0	10.0	285.0	6.0	864.0	91.0	80.0	0.0	11920.0
Valencia	17368.0	5783.0	2306.0	178.0	279.0	0.0	441.0	0.0	0.0	0.0	26355.0
System	190140.0	56703.0	32265.0	2278.0	10615.0	8462.0	9319.0	8607.0	3395.0	1899.0	323683.0

Florida College System
 FTE Enrollment: Funded-30, Lower Level
 Division Estimates With College Adjustments As Of November 2008
 2008-09 FTE-1A

	A & P	Postsec. Voc.	College Prep.	EPI	Postsec. Adult Voc.	Apprentice	CWE	Adult Basic	Adult Sec./GED Prep.	Voc. Prep.	Total
Brevard	6647.0	2449.0	776.0	70.0	688.0	527.0	124.0	0.0	0.0	0.0	11281.0
Broward	13772.0	6137.0	3751.0	100.0	535.0	0.0	277.0	0.0	0.0	0.0	24572.0
Central Florida	3117.0	1047.0	634.0	47.0	436.0	0.0	178.0	66.0	11.0	2.0	5538.0
Chipola	1076.0	220.0	130.0	0.0	197.0	9.0	40.0	0.0	0.0	10.0	1682.0
Daytona	6477.0	2636.0	1108.0	60.0	769.0	573.0	81.0	843.0	312.0	15.0	12874.0
Edison	5861.0	1865.0	972.0	18.0	0.0	0.0	52.0	0.0	0.0	0.0	8768.0
Fla CC At Jax	11611.0	3684.0	1480.0	182.0	1040.0	578.0	3666.0	1099.0	264.0	39.0	23643.0
Florida Keys	714.0	236.0	60.0	16.0	45.0	0.0	27.0	0.0	0.0	0.0	1098.0
Gulf Coast	2760.0	1076.0	303.0	56.0	319.0	158.0	266.0	67.0	0.0	0.0	5005.0
Hillsborough	10599.0	3035.0	2179.0	185.0	371.0	1716.0	228.0	62.0	14.0	0.0	18389.0
Indian River	5549.0	2693.0	676.0	125.0	1170.0	1021.0	14.0	1167.0	327.0	0.0	12742.0
Lake City	1244.0	381.0	155.0	28.0	397.0	0.0	111.0	0.0	0.0	0.0	2316.0
Lake Sumter	1792.0	606.0	275.0	55.0	0.0	0.0	47.0	0.0	0.0	0.0	2775.0
Manatee	6513.0	561.0	1081.0	82.0	0.0	0.0	110.0	40.0	6.0	0.0	8393.0
Miami Dade	32427.0	5364.0	8602.0	86.0	695.0	905.0	1641.0	3077.0	1401.0	1779.0	55977.0
North Florida	494.0	126.0	79.0	9.0	103.0	0.0	53.0	10.0	0.0	0.0	874.0
Northwest FLA	3826.0	751.0	337.0	49.0	171.0	0.0	39.0	161.0	43.0	0.0	5377.0
Palm Beach	12820.0	1422.0	1597.0	89.0	914.0	1334.0	236.0	0.0	0.0	0.0	18412.0
Pasco-Hernando	3238.0	1609.0	648.0	75.0	350.0	0.0	47.0	12.0	5.0	0.0	5984.0
Pensacola	5039.0	1748.0	536.0	44.0	427.0	0.0	50.0	368.0	437.0	17.0	8666.0
Polk	3603.0	1398.0	588.0	186.0	93.0	0.0	204.0	0.0	0.0	0.0	6072.0
St. Johns River	2576.0	800.0	378.0	138.0	128.0	392.0	42.0	82.0	8.0	0.0	4544.0
St. Petersburg	10600.0	4179.0	1516.0	0.0	145.0	0.0	331.0	0.0	0.0	0.0	16771.0
Santa Fe	8025.0	2355.0	991.0	55.0	161.0	190.0	87.0	104.0	19.0	5.0	11992.0
Seminole	5703.0	2573.0	942.0	45.0	355.0	874.0	85.0	669.0	531.0	30.0	11807.0
South Florida	1166.0	176.0	134.0	9.0	491.0	158.0	80.0	465.0	75.0	0.0	2754.0
Tallahassee	8135.0	1226.0	1156.0	8.0	242.0	14.0	937.0	102.0	55.0	0.0	11875.0
Valencia	17368.0	5783.0	2306.0	178.0	279.0	0.0	441.0	0.0	0.0	0.0	26355.0
System	192752.0	56136.0	33390.0	1995.0	10521.0	8449.0	9494.0	8394.0	3508.0	1897.0	326536.0

FLORIDA COMMUNITY COLLEGES
 ENROLLMENT ESTIMATING CONFERENCE SUMMARY
 FUNDED-30, LOWER LEVEL

	2007-08 FTE3	2008-09 FTE1			2008-09 FTE1A				
	ACTUAL	DIVISION	CHANGE	%CHANGE	COLL ADJ	CHANGE	%CHANGE	CHANGE	%CHANGE
	C1	ESTIMATE	C1-C2	C1/C2	ESTIMATE	C3-C1	C3/C1	C3-C2	C3/C2
		C2			C3				
Brevard	10,825.0	11,281	456.0	4.20	11,281	456.0	4.20	0.0	0.00
Broward	23,018.2	24,260	1241.8	5.40	24,572	1553.8	6.80	312.0	1.30
Central Florida	4,885.9	5,478	592.1	12.10	5,538	652.1	13.30	60.0	1.10
Chipola	1,537.0	1,682	145.0	9.40	1,682	145.0	9.40	0.0	0.00
Daytona	12,042.6	12,836	793.4	6.60	12,874	831.4	6.90	38.0	0.30
Edison	8,094.5	8,768	673.5	8.30	8,768	673.5	8.30	0.0	0.00
Fla CC At Jax	22,464.0	24,380	1916.0	8.50	23,643	1179.0	5.20	-737.0	-3.00
Florida Keys	789.7	865	75.3	9.50	1,098	308.3	39.00	233.0	26.90
Gulf Coast	4,831.6	4,884	52.4	1.10	5,005	173.4	3.60	121.0	2.50
Hillsborough	16,880.7	18,389	1508.3	8.90	18,389	1508.3	8.90	0.0	0.00
Indian River	12,098.1	12,742	643.9	5.30	12,742	643.9	5.30	0.0	0.00
Lake City	2,335.7	2,316	-19.7	-0.80	2,316	-19.7	-0.80	0.0	0.00
Lake Sumter	2,580.4	2,775	194.6	7.50	2,775	194.6	7.50	0.0	0.00
Manatee	7,717.6	8,393	675.4	8.80	8,393	675.4	8.80	0.0	0.00
Miami Dade	52,838.9	53,577	738.1	1.40	55,977	3138.1	5.90	2400.0	4.50
North Florida	956.4	874	-82.4	-8.60	874	-82.4	-8.60	0.0	0.00
Northwest FLA	5,088.7	5,377	288.3	5.70	5,377	288.3	5.70	0.0	0.00
Palm Beach	16,624.2	18,343	1718.8	10.30	18,412	1787.8	10.80	69.0	0.40
Pasco-Hernando	5,521.9	6,025	503.1	9.10	5,984	462.1	8.40	-41.0	-0.70
Pensacola	8,389.5	8,516	126.5	1.50	8,666	276.5	3.30	150.0	1.80
Polk	5,313.1	6,126	812.9	15.30	6,072	758.9	14.30	-54.0	-0.90
St. Johns River	4,190.4	4,349	158.6	3.80	4,544	353.6	8.40	195.0	4.50
St. Petersburg	16,086.3	16,771	684.7	4.30	16,771	684.7	4.30	0.0	0.00
Santa Fe	11,873.4	11,836	-37.4	-0.30	11,992	118.6	1.00	156.0	1.30
Seminole	10,668.5	11,811	1142.5	10.70	11,807	1138.5	10.70	-4.0	0.00
South Florida	2,611.0	2,754	143.0	5.50	2,754	143.0	5.50	0.0	0.00
Tallahassee	11,455.6	11,920	464.4	4.10	11,875	419.4	3.70	-45.0	-0.40
Valencia	23,815.8	26,355	2539.2	10.70	26,355	2539.2	10.70	0.0	0.00
System Total	305,534.7	323,683	18148.3	5.90	326,536	21001.3	6.90	2853.0	0.90

SOURCE: FN30C3, FN30C1, FN30C1A

PAGE 5

Florida College System
 FTE Enrollment: Funded-30, Upper Level
 ACTUAL SUMMER END-OF-TERM, Fall Beginning-Of-Term, As Of November 2008
 2008-09 FTE-1

	A & P	Postsec. Voc.	College Prep.	EPI	Postsec. Adult Voc.	Apprentice	CWE	Adult Basic	Adult Sec./GED Prep.	Voc. Prep.	Total
Brevard	0.0	0.0	0.0	0.0	0.0	0.0	0.0	0.0	0.0	0.0	0.0
Broward	0.0	0.0	0.0	0.0	0.0	0.0	0.0	0.0	0.0	0.0	0.0
Central Florida	0.0	0.0	0.0	0.0	0.0	0.0	0.0	0.0	0.0	0.0	0.0
Chipola	56.7	0.0	0.0	0.0	0.0	0.0	0.0	0.0	0.0	0.0	56.7
Daytona	134.9	0.0	0.0	0.0	0.0	0.0	0.0	0.0	0.0	0.0	134.9
Edison	41.8	0.0	0.0	0.0	0.0	0.0	0.0	0.0	0.0	0.0	41.8
Fla CC At Jax	37.4	0.0	0.0	0.0	0.0	0.0	0.0	0.0	0.0	0.0	37.4
Florida Keys	0.0	0.0	0.0	0.0	0.0	0.0	0.0	0.0	0.0	0.0	0.0
Gulf Coast	0.0	0.0	0.0	0.0	0.0	0.0	0.0	0.0	0.0	0.0	0.0
Hillsborough	0.0	0.0	0.0	0.0	0.0	0.0	0.0	0.0	0.0	0.0	0.0
Indian River	189.0	0.0	0.0	0.0	0.0	0.0	0.0	0.0	0.0	0.0	189.0
Lake City	0.0	0.0	0.0	0.0	0.0	0.0	0.0	0.0	0.0	0.0	0.0
Lake Sumter	0.0	0.0	0.0	0.0	0.0	0.0	0.0	0.0	0.0	0.0	0.0
Manatee	0.0	0.0	0.0	0.0	0.0	0.0	0.0	0.0	0.0	0.0	0.0
Miami Dade	420.3	0.0	0.0	0.0	0.0	0.0	0.0	0.0	0.0	0.0	420.3
North Florida	0.0	0.0	0.0	0.0	0.0	0.0	0.0	0.0	0.0	0.0	0.0
Northwest FLA	100.5	0.0	0.0	0.0	0.0	0.0	0.0	0.0	0.0	0.0	100.5
Palm Beach	0.0	0.0	0.0	0.0	0.0	0.0	0.0	0.0	0.0	0.0	0.0
Pasco-Hernando	0.0	0.0	0.0	0.0	0.0	0.0	0.0	0.0	0.0	0.0	0.0
Pensacola	0.0	0.0	0.0	0.0	0.0	0.0	0.0	0.0	0.0	0.0	0.0
Polk	0.0	0.0	0.0	0.0	0.0	0.0	0.0	0.0	0.0	0.0	0.0
St. Johns River	0.0	0.0	0.0	0.0	0.0	0.0	0.0	0.0	0.0	0.0	0.0
St. Petersburg	897.0	0.0	0.0	0.0	0.0	0.0	0.0	0.0	0.0	0.0	897.0
Santa Fe	0.0	0.0	0.0	0.0	0.0	0.0	0.0	0.0	0.0	0.0	0.0
Seminole	0.0	0.0	0.0	0.0	0.0	0.0	0.0	0.0	0.0	0.0	0.0
South Florida	0.0	0.0	0.0	0.0	0.0	0.0	0.0	0.0	0.0	0.0	0.0
Tallahassee	0.0	0.0	0.0	0.0	0.0	0.0	0.0	0.0	0.0	0.0	0.0
Valencia	0.0	0.0	0.0	0.0	0.0	0.0	0.0	0.0	0.0	0.0	0.0
System	1877.6	0.0	0.0	0.0	0.0	0.0	0.0	0.0	0.0	0.0	1877.6

Florida College System
FTE Enrollment: Funded-40, Lower Level

2007-08 FTE-3

	A & P	Postsec. Voc.	College Prep.	EPI	Postsec. Adult Voc.	Apprentice	CWE	Adult Basic	Adult Sec./GED Prep.	Voc. Prep.	Total
Brevard	4751.9	1735.7	586.5	44.0	687.3	527.0	124.1	0.0	0.0	0.0	8456.5
Broward	9659.0	4310.3	2659.2	60.2	505.4	0.0	267.8	0.0	0.0	0.0	17461.9
Central Florida	1970.9	748.9	357.6	37.6	477.1	0.0	177.7	66.0	10.5	2.3	3848.6
Chipola	719.3	158.3	84.6	0.0	196.8	9.0	39.8	0.0	0.0	9.8	1217.6
Daytona	4258.1	1788.2	801.5	63.6	757.1	641.4	68.7	931.6	410.0	22.8	9743.0
Edison	3960.4	1307.9	679.8	80.2	11.7	0.0	50.8	0.0	0.0	0.0	6090.8
Fla CC At Jax	7989.6	2603.1	1135.8	113.7	1040.4	576.5	3666.3	1099.2	263.6	38.9	18527.1
Florida Keys	340.4	176.7	36.9	4.8	25.8	0.0	23.8	0.0	0.0	0.0	608.4
Gulf Coast	1996.7	747.2	260.5	40.6	288.3	152.1	267.1	67.0	1.3	0.0	3820.8
Hillsborough	7193.1	2092.8	1490.1	96.7	369.7	1716.1	227.6	61.5	13.6	0.0	13261.2
Indian River	3758.4	2016.0	443.5	87.9	1170.4	1019.5	14.3	1167.2	326.3	0.0	10003.5
Lake City	949.5	285.0	123.8	11.6	396.5	0.0	111.4	0.6	0.5	2.7	1881.6
Lake Sumter	1214.4	458.0	201.9	30.4	0.0	0.0	46.1	0.0	0.0	0.0	1950.8
Manatee	4407.1	462.8	744.0	63.1	0.0	0.0	109.8	39.8	4.5	0.0	5831.1
Miami Dade	21478.3	6713.3	4270.4	57.6	894.7	703.6	1641.5	3276.4	1200.2	1778.5	42014.5
North Florida	382.7	117.2	82.7	10.6	102.7	0.0	52.5	9.8	1.7	0.7	760.6
Northwest FLA	2702.1	517.2	233.8	57.7	171.7	0.0	37.9	161.0	41.6	0.0	3923.0
Palm Beach	8369.5	981.8	1051.8	50.0	914.0	1545.3	235.4	0.0	0.0	0.0	13147.8
Pasco-Hernando	2311.1	1040.8	429.8	60.5	351.4	0.0	47.2	6.6	0.1	0.0	4247.5
Pensacola	3702.0	1313.2	395.2	44.6	375.1	0.0	49.6	308.0	375.2	14.6	6577.5
Polk	2374.5	923.6	361.2	97.4	105.0	0.0	203.9	0.0	0.0	0.0	4065.6
St. Johns River	1728.5	589.0	228.7	64.8	127.0	399.6	42.6	122.1	22.2	0.0	3324.5
St. Petersburg	7473.4	3058.1	1182.0	0.0	143.9	0.0	330.7	0.0	0.0	0.0	12188.1
Santa Fe	5920.5	1779.2	776.7	31.3	156.7	177.7	70.6	104.3	18.6	4.8	9040.4
Seminole	3816.6	1754.5	660.1	30.5	302.4	814.5	11.1	623.7	541.9	27.9	8583.2
South Florida	797.1	116.8	86.5	11.2	490.6	157.5	80.3	464.3	74.2	0.0	2278.5
Tallahassee	5857.5	937.6	788.1	20.1	285.2	0.0	863.8	90.5	79.8	0.0	8922.6
Valencia	11689.8	3972.8	1607.1	58.9	279.1	0.0	440.5	0.0	0.0	0.0	18048.2
System	131772.4	42706.0	21759.8	1329.6	10626.0	8439.8	9302.9	8599.6	3385.8	1903.0	239824.9

Florida College System
 FTE Enrollment: Funded-40, Lower Level
 Division Estimates With College Adjustments As Of November 2008
 2008-09 FTE-1A

	A & P	Postsec. Voc.	College Prep.	EPI	Postsec. Adult Voc.	Apprentice	CWE	Adult Basic	Adult Sec./GED Prep.	Voc. Prep.	Total
Brevard	4985.3	1836.9	582.0	52.6	688.0	527.0	124.0	0.0	0.0	0.0	8795.8
Broward	10329.0	4602.8	2813.3	75.0	535.0	0.0	277.0	0.0	0.0	0.0	18632.1
Central Florida	2337.8	785.3	475.5	35.3	436.0	0.0	178.0	66.0	11.0	2.0	4326.9
Chipola	807.0	165.0	97.6	0.0	197.0	9.0	40.0	0.0	0.0	10.0	1325.6
Daytona	4857.8	1977.0	831.0	45.0	769.0	573.0	81.0	843.0	312.0	15.0	10303.8
Edison	4395.9	1398.9	729.2	13.6	0.0	0.0	52.0	0.0	0.0	0.0	6589.6
Fla CC At Jax	8708.3	2763.0	1110.0	136.5	1040.0	578.0	3666.0	1099.0	264.0	39.0	19403.8
Florida Keys	535.5	177.0	45.0	12.0	45.0	0.0	27.0	0.0	0.0	0.0	841.5
Gulf Coast	2070.0	807.0	227.3	42.0	319.0	158.0	266.0	67.0	0.0	0.0	3956.3
Hillsborough	7949.3	2276.3	1634.4	138.8	371.0	1716.0	228.0	62.0	14.0	0.0	14389.8
Indian River	4161.9	2019.8	507.1	93.9	1170.0	1021.0	14.0	1167.0	327.0	0.0	10481.7
Lake City	933.1	285.8	116.4	21.0	397.0	0.0	111.0	0.0	0.0	0.0	1864.3
Lake Sumter	1344.1	454.7	206.4	41.3	0.0	0.0	47.0	0.0	0.0	0.0	2093.5
Manatee	4884.8	420.8	810.8	61.5	0.0	0.0	110.0	40.0	6.0	0.0	6333.9
Miami Dade	24320.3	4023.0	6451.5	64.5	695.0	905.0	1641.0	3077.0	1401.0	1779.0	44357.3
North Florida	370.5	94.6	59.4	6.8	103.0	0.0	53.0	10.0	0.0	0.0	697.3
Northwest FLA	2869.6	563.3	252.9	36.8	171.0	0.0	39.0	161.0	43.0	0.0	4136.6
Palm Beach	9615.0	1066.5	1197.8	66.8	914.0	1334.0	236.0	0.0	0.0	0.0	14430.1
Pasco-Hernando	2428.5	1206.8	486.0	56.3	350.0	0.0	47.0	12.0	5.0	0.0	4591.6
Pensacola	3779.3	1311.0	402.0	33.0	427.0	0.0	50.0	368.0	437.0	17.0	6824.3
Polk	2702.3	1048.5	441.0	139.5	93.0	0.0	204.0	0.0	0.0	0.0	4628.3
St. Johns River	1932.0	600.0	283.5	103.5	128.0	392.0	42.0	82.0	8.0	0.0	3571.0
St. Petersburg	7950.1	3134.3	1137.1	0.0	145.0	0.0	331.0	0.0	0.0	0.0	12697.5
Santa Fe	6018.8	1766.3	743.3	41.3	161.0	190.0	87.0	104.0	19.0	5.0	9135.7
Seminole	4277.3	1929.8	706.5	33.8	355.0	874.0	85.0	669.0	531.0	30.0	9491.4
South Florida	874.5	132.2	100.6	6.9	491.0	158.0	80.0	465.0	75.0	0.0	2383.2
Tallahassee	6101.3	919.5	867.0	6.0	242.0	14.0	937.0	102.0	55.0	0.0	9243.8
Valencia	13026.1	4337.3	1729.6	133.7	279.0	0.0	441.0	0.0	0.0	0.0	19946.7
System	144565.4	42103.4	25044.2	1497.4	10521.0	8449.0	9494.0	8394.0	3508.0	1897.0	255473.4

FLORIDA COMMUNITY COLLEGE SYSTEM
Student Data Base FTE Report
2007-2008 FTE-3 Compared to the 2008-2009 FTE-1 (Division Estimates)

	Adv. & Prof.	Diff. Percent	Postsec. Voc.	Diff. Percent	College Prep	Diff. Percent	EPI	Diff. Percent	Postsec. Adult	Diff. Percent	Apprenticeship	Diff. Percent	CWE	Diff. Percent	Adult Basic	Diff. Percent	Adult S&G	Diff. Percent	Voc. Prep	Diff. Percent	Total FTE	Diff. Percent	
BREV																							
2008 FTE-3	6333.3	314	2312.9	136	781.9	-6	58.5	12	687.3	1	527.0	0	124.1	0	0.0	0	0.0	0	0.0	0	0	10825.0	456
2009 FTE-1	6647.0	5.0	2449.0	5.9	776.0	-0.8	70.0	19.7	688.0	0.1	527.0	0.0	124.0	-0.1	0.0	0.0	0.0	0.0	0.0	0.0	0	11281.0	4.2
BROW																							
2008 FTE-3	12874.4	808	5745.3	302	3545.0	116	80.3	18	505.4	0	0.0	0	267.8	-1	0.0	0	0.0	0	0.0	0	0	23018.2	1242
2009 FTE-1	13682.0	6.3	6047.0	5.3	3661.0	3.3	98.0	22.0	505.0	-0.1	0.0	0.0	267.0	-0.3	0.0	0.0	0.0	0.0	0.0	0.0	0	24260.0	5.4
CFLA																							
2008 FTE-3	2627.3	418	998.1	79	476.8	97	50.1	-3	477.1	1	0.0	0	177.7	0	66.0	0	10.5	1	2.3	0	4885.9	592	
2009 FTE-1	3045.0	15.9	1077.0	7.9	574.0	20.4	47.0	-6.2	478.0	0.2	0.0	0.0	178.0	0.2	66.0	0.0	11.0	4.8	2.0	-13.0	5478.0	12.1	
CHIP																							
2008 FTE-3	958.0	118	211.0	9	112.6	17	0.0	0	196.8	0	9.0	0	39.8	0	0.0	0	0.0	0	9.8	0	1537.0	145	
2009 FTE-1	1076.0	12.3	220.0	4.3	130.0	15.5	0.0	0.0	197.0	0.1	9.0	0.0	40.0	0.5	0.0	0.0	0.0	0.0	10.0	2.0	1682.0	9.4	
DAYT																							
2008 FTE-3	5675.0	601	2382.9	195	1068.3	5	84.8	-7	757.1	0	641.4	0	68.7	-1	931.6	0	410.0	0	22.8	0	12042.6	793	
2009 FTE-1	6276.0	10.6	2578.0	8.2	1073.0	0.4	78.0	-8.0	757.0	0.0	641.0	-0.1	68.0	-1.0	932.0	0.0	410.0	0.0	23.0	0.9	12836.0	6.6	
EDIS																							
2008 FTE-3	5277.4	584	1742.1	123	905.8	66	106.7	-89	11.7	-12	0.0	0	50.8	1	0.0	0	0.0	0	0.0	0	8094.5	674	
2009 FTE-1	5861.0	11.1	1865.0	7.1	972.0	7.3	18.0	-83.1	0.0	-100.0	0.0	0.0	52.0	2.4	0.0	0.0	0.0	0.0	0.0	0.0	8768.0	8.3	
FJAX																							
2008 FTE-3	10645.9	1470	3467.8	288	1514.2	82	151.2	75	1040.4	0	576.5	2	3666.3	0	1099.2	0	263.6	0	38.9	0	22464.0	1916	
2009 FTE-1	12116.0	13.8	3756.0	8.3	1596.0	5.4	226.0	49.5	1040.0	0.0	578.0	0.3	3666.0	0.0	1099.0	0.0	264.0	0.2	39.0	0.3	24380.0	8.5	
FKEY																							
2008 FTE-3	450.7	81	234.1	-25	48.9	7	6.4	10	25.8	1	0.0	0	23.8	1	0.0	0	0.0	0	0.0	0	789.7	75	
2009 FTE-1	532.0	18.0	209.0	-10.7	56.0	14.5	16.0	150.0	27.0	4.7	0.0	0.0	25.0	5.0	0.0	0.0	0.0	0.0	0.0	0.0	865.0	9.5	
GULF																							
2008 FTE-3	2660.0	50	994.8	41	347.0	-44	54.0	7	288.3	0	152.1	1	267.1	-1	67.0	0	1.3	-1	0.0	0	4831.6	52	
2009 FTE-1	2710.0	1.9	1036.0	4.1	303.0	-12.7	61.0	13.0	288.0	-0.1	153.0	0.6	266.0	-0.4	67.0	0.0	0.0	-100.0	0.0	0.0	4884.0	1.1	
HILL																							
2008 FTE-3	9587.5	1012	2789.2	246	1986.7	192	128.8	56	369.7	1	1716.1	0	227.6	0	61.5	1	13.6	0	0.0	0	16880.7	1508	
2009 FTE-1	10599.0	10.6	3035.0	8.8	2179.0	9.7	185.0	43.6	371.0	0.4	1716.0	0.0	228.0	0.2	62.0	0.8	14.0	2.9	0.0	0.0	18389.0	8.9	
INDR																							
2008 FTE-3	5007.7	541	2685.5	8	590.5	86	116.7	8	1170.4	0	1019.5	2	14.3	0	1167.2	0	326.3	1	0.0	0	12098.1	644	
2009 FTE-1	5549.0	10.8	2693.0	0.3	676.0	14.5	125.0	7.1	1170.0	0.0	1021.0	0.1	14.0	-2.1	1167.0	0.0	327.0	0.2	0.0	0.0	12742.0	5.3	
LCTY																							
2008 FTE-3	1265.1	-21	378.9	2	164.6	-10	15.4	13	396.5	1	0.0	0	111.4	0	0.6	-1	0.5	-1	2.7	-3	2335.7	-20	
2009 FTE-1	1244.0	-1.7	381.0	0.6	155.0	-5.8	28.0	81.8	397.0	0.1	0.0	0.0	111.0	-0.4	0.0	-100.0	0.0	-100.0	0.0	-100.0	2316.0	-0.8	
LSUM																							
2008 FTE-3	1616.2	176	608.9	-3	269.1	6	40.1	15	0.0	0	0.0	0	46.1	1	0.0	0	0.0	0	0.0	0	2580.4	195	
2009 FTE-1	1792.0	10.9	606.0	-0.5	275.0	2.2	55.0	37.2	0.0	0.0	0.0	0.0	47.0	2.0	0.0	0.0	0.0	0.0	0.0	0.0	2775.0	7.5	
MANA																							
2008 FTE-3	5871.7	641	615.9	-55	992.0	89	83.9	-2	0.0	0	0.0	0	109.8	0	39.8	0	4.5	2	0.0	0	7717.6	675	
2009 FTE-1	6513.0	10.9	561.0	-8.9	1081.0	9.0	82.0	-2.3	0.0	0.0	0.0	0.0	110.0	0.2	40.0	0.5	6.0	33.3	0.0	0.0	8393.0	8.8	
MIAM																							
2008 FTE-3	28626.9	1700	8947.2	-2983	5693.3	2009	76.6	9	894.7	0	703.6	1	1641.5	-1	3276.4	1	1200.2	1	1778.5	1	52838.9	738	
2009 FTE-1	30327.0	5.9	5964.0	-33.3	7702.0	35.3	86.0	12.3	895.0	0.0	705.0	0.2	1641.0	0.0	3277.0	0.0	1201.0	0.1	1779.0	0.0	53577.0	1.4	

Sources: 2007-2008 Student Data Base FTE-3 - Unweighted
2008-2009 Estimates FTE-1 (Division Estimates) - Unweighted

Note: Advanced and Professional, Post Secondary Vocational, College Preparatory and EPI are calculated as 30 Credit Hour FTE.

FLORIDA COMMUNITY COLLEGE SYSTEM
Student Data Base FTE Report
2007-2008 FTE-3 Compared to the 2008-2009 FTE-1 (Division Estimates)

	Adv. & Prof.	Diff. Percent	Postsec. Voc.	Diff. Percent	College Prep	Diff. Percent	EPI	Diff. Percent	Postsec. Adult	Diff. Percent	Apprenticeship	Diff. Percent	CWE	Diff. Percent	Adult Basic	Diff. Percent	Adult S&G	Diff. Percent	Voc. Prep	Diff. Percent	Total FTE	Diff. Percent	
NFLA																							
2008 FTE-3	509.0	-15	155.7	-30	110.2	-31	14.1	-5	102.7	0	0.0	0	52.5	1	9.8	0	1.7	-2	0.7	-1	956.4	-82	
2009 FTE-1	494.0	-2.9	126.0	-19.1	79.0	-28.3	9.0	-36.2	103.0	0.3	0.0	0.0	53.0	1.0	10.0	2.0	0.0	-100.0	0.0	-100.0	874.0	-8.6	
NWFLA																							
2008 FTE-3	3599.0	227	689.2	62	311.5	26	76.8	-28	171.7	-1	0.0	0	37.9	1	161.0	0	41.6	1	0.0	0	5088.7	288	
2009 FTE-1	3826.0	6.3	751.0	9.0	337.0	8.2	49.0	-36.2	171.0	-0.4	0.0	0.0	39.0	2.9	161.0	0.0	43.0	3.4	0.0	0.0	5377.0	5.7	
PALM																							
2008 FTE-3	11153.3	1440	1307.9	114	1401.5	137	66.8	28	914.0	0	1545.3	0	235.4	1	0.0	0	0.0	0	0.0	0	16624.2	1719	
2009 FTE-1	12593.0	12.9	1422.0	8.7	1538.0	9.7	95.0	42.2	914.0	0.0	1545.0	0.0	236.0	0.3	0.0	0.0	0.0	0.0	0.0	0.0	18343.0	10.3	
PASC																							
2008 FTE-3	3076.6	112	1386.6	222	573.0	75	80.4	85	351.4	-1	0.0	0	47.2	0	6.6	5	0.1	5	0.0	0	5521.9	503	
2009 FTE-1	3189.0	3.7	1609.0	16.0	648.0	13.1	165.0	105.2	350.0	-0.4	0.0	0.0	47.0	-0.4	12.0	81.8	5.0	4900.0	0.0	0.0	6025.0	9.1	
PENS																							
2008 FTE-3	4931.2	104	1749.6	22	526.8	5	59.4	-7	375.1	-1	0.0	0	49.6	0	308.0	0	375.2	1	14.6	2	8389.5	127	
2009 FTE-1	5035.0	2.1	1772.0	1.3	532.0	1.0	52.0	-12.5	374.0	-0.3	0.0	0.0	50.0	0.8	308.0	0.0	376.0	0.2	17.0	16.4	8516.0	1.5	
POLK																							
2008 FTE-3	3163.5	410	1230.0	143	481.3	85	129.4	177	105.0	-1	0.0	0	203.9	0	0.0	0	0.0	0	0.0	0	5313.1	813	
2009 FTE-1	3573.0	12.9	1373.0	11.6	566.0	17.6	306.0	136.5	104.0	-1.0	0.0	0.0	204.0	0.0	0.0	0.0	0.0	0.0	0.0	0.0	6126.0	15.3	
ST.J																							
2008 FTE-3	2301.6	89	784.3	-5	304.8	20	86.2	55	127.0	1	399.6	-1	42.6	-1	122.1	0	22.2	0	0.0	0	4190.4	159	
2009 FTE-1	2391.0	3.9	779.0	-0.7	325.0	6.6	141.0	63.6	128.0	0.8	399.0	-0.2	42.0	-1.4	122.0	-0.1	22.0	-0.9	0.0	0.0	4349.0	3.8	
ST.P																							
2008 FTE-3	9961.4	639	4074.7	104	1575.6	-60	0.0	0	143.9	1	0.0	0	330.7	0	0.0	0	0.0	0	0.0	0	16086.3	685	
2009 FTE-1	10600.0	6.4	4179.0	2.6	1516.0	-3.8	0.0	0.0	145.0	0.8	0.0	0.0	331.0	0.1	0.0	0.0	0.0	0.0	0.0	0.0	16771.0	4.3	
SANF																							
2008 FTE-3	7892.2	38	2371.2	-31	1035.5	-57	41.8	5	156.7	-1	177.7	12	70.6	0	104.3	0	18.6	0	4.8	-5	11873.4	-37	
2009 FTE-1	7930.0	0.5	2340.0	-1.3	979.0	-5.5	47.0	12.4	156.0	-0.4	190.0	6.9	71.0	0.6	104.0	-0.3	19.0	2.2	0.0	-100.0	11836.0	-0.3	
SEMI																							
2008 FTE-3	5088.2	740	2338.4	341	880.0	47	40.4	2	302.4	0	814.5	-1	11.1	13	623.7	0	541.9	0	27.9	1	10668.5	1143	
2009 FTE-1	5828.0	14.5	2679.0	14.6	927.0	5.3	42.0	4.0	302.0	-0.1	814.0	-0.1	24.0	116.2	624.0	0.0	542.0	0.0	29.0	3.9	11811.0	10.7	
SFLA																							
2008 FTE-3	1059.6	106	154.5	22	115.2	19	14.8	-6	490.6	0	157.5	1	80.3	0	464.3	1	74.2	1	0.0	0	2611.0	143	
2009 FTE-1	1166.0	10.0	176.0	13.9	134.0	16.3	9.0	-39.2	491.0	0.1	158.0	0.3	80.0	-0.4	465.0	0.2	75.0	1.1	0.0	0.0	2754.0	5.5	
TALL																							
2008 FTE-3	7809.1	369	1249.7	-13	1050.7	118	26.8	-17	285.2	0	0.0	6	863.8	0	90.5	1	79.8	0	0.0	0	11455.6	464	
2009 FTE-1	8178.0	4.7	1237.0	-1.0	1169.0	11.3	10.0	-62.7	285.0	-0.1	6.0	0.0	864.0	0.0	91.0	0.6	80.0	0.3	0.0	0.0	11920.0	4.1	
VALE																							
2008 FTE-3	15581.7	1786	5294.7	488	2141.6	164	78.2	100	279.1	0	0.0	0	440.5	1	0.0	0	0.0	0	0.0	0	23815.8	2539	
2009 FTE-1	17368.0	11.5	5783.0	9.2	2306.0	7.7	178.0	127.6	279.0	0.0	0.0	0.0	441.0	0.1	0.0	0.0	0.0	0.0	0.0	0.0	26355.0	10.7	
SYST TOTAL																							
2008 FTE-3	175603.5	14536	56901.1	-198	29004.4	3261	1768.6	509	10626.0	-11	8439.8	22	9302.9	16	8599.6	7	3385.8	9	1903.0	-4	305534.7	18148	
2009 FTE-1	190140.0	8.3	56703.0	-0.3	32265.0	11.2	2278.0	28.8	10615.0	-0.1	8462.0	0.3	9319.0	0.2	8607.0	0.1	3395.0	0.3	1899.0	-0.2	323683.0	5.9	

Sources: 2007-2008 Student Data Base FTE-3 - Unweighted
2008-2009 Estimates FTE-1 (Division Estimates) - Unweighted

Note: Advanced and Professional, Post Secondary Vocational, College Preparatory and EPI are calculated as 30 Credit Hour FTE.

FLORIDA COMMUNITY COLLEGE SYSTEM
Student Data Base FTE Report
2007-2008 FTE-3 Compared to the 2008-2009 FTE-1A (Division Estimates with college adjustments)

	Adv. & Prof.	Diff. Percent	Postsec. Voc.	Diff. Percent	College Prep	Diff. Percent	EPI	Diff. Percent	Postsec. Adult	Diff. Percent	Appren-ticeship	Diff. Percent	CWE	Diff. Percent	Adult Basic	Diff. Percent	Adult S&G	Diff. Percent	Voc. Prep	Diff. Percent	Total FTE	Diff. Percent	
BREV																							
2008 FTE-3	6333.3	314	2312.9	136	781.9	-6	58.5	12	687.3	1	527.0	0	124.1	0	0.0	0	0.0	0	0.0	0	0	10825.0	456
2009 FTE-1A	6647.0	5.0	2449.0	5.9	776.0	-0.8	70.0	19.7	688.0	0.1	527.0	0.0	124.0	-0.1	0.0	0.0	0.0	0.0	0.0	0.0	0	11281.0	4.2
BROW																							
2008 FTE-3	12874.4	898	5745.3	392	3545.0	206	80.3	20	505.4	30	0.0	0	267.8	9	0.0	0	0.0	0	0.0	0	0	23018.2	1554
2009 FTE-1A	13772.0	7.0	6137.0	6.8	3751.0	5.8	100.0	24.5	535.0	5.9	0.0	0.0	277.0	3.4	0.0	0.0	0.0	0.0	0.0	0.0	0	24572.0	6.8
CFLA																							
2008 FTE-3	2627.3	490	998.1	49	476.8	157	50.1	-3	477.1	-41	0.0	0	177.7	0	66.0	0	10.5	1	2.3	0	4885.9	652	
2009 FTE-1A	3117.0	18.6	1047.0	4.9	634.0	33.0	47.0	-6.2	436.0	-8.6	0.0	0.0	178.0	0.2	66.0	0.0	11.0	4.8	2.0	-13.0	5538.0	13.3	
CHIP																							
2008 FTE-3	958.0	118	211.0	9	112.6	17	0.0	0	196.8	0	9.0	0	39.8	0	0.0	0	0.0	0	9.8	0	1537.0	145	
2009 FTE-1A	1076.0	12.3	220.0	4.3	130.0	15.5	0.0	0.0	197.0	0.1	9.0	0.0	40.0	0.5	0.0	0.0	0.0	0.0	10.0	2.0	1682.0	9.4	
DAYT																							
2008 FTE-3	5675.0	802	2382.9	253	1068.3	40	84.8	-25	757.1	12	641.4	-68	68.7	12	931.6	-89	410.0	-98	22.8	-8	12042.6	831	
2009 FTE-1A	6477.0	14.1	2636.0	10.6	1108.0	3.7	60.0	-29.2	769.0	1.6	573.0	-10.7	81.0	17.9	843.0	-9.5	312.0	-23.9	15.0	-34.2	12874.0	6.9	
EDIS																							
2008 FTE-3	5277.4	584	1742.1	123	905.8	66	106.7	-89	11.7	-12	0.0	0	50.8	1	0.0	0	0.0	0	0.0	0	8094.5	674	
2009 FTE-1A	5861.0	11.1	1865.0	7.1	972.0	7.3	18.0	-83.1	0.0	-100.0	0.0	0.0	52.0	2.4	0.0	0.0	0.0	0.0	0.0	0.0	8768.0	8.3	
FJAX																							
2008 FTE-3	10645.9	965	3467.8	216	1514.2	-34	151.2	31	1040.4	0	576.5	2	3666.3	0	1099.2	0	263.6	0	38.9	0	22464.0	1179	
2009 FTE-1A	11611.0	9.1	3684.0	6.2	1480.0	-2.3	182.0	20.4	1040.0	0.0	578.0	0.3	3666.0	0.0	1099.0	0.0	264.0	0.2	39.0	0.3	23643.0	5.2	
FKEY																							
2008 FTE-3	450.7	263	234.1	2	48.9	11	6.4	10	25.8	19	0.0	0	23.8	3	0.0	0	0.0	0	0.0	0	789.7	308	
2009 FTE-1A	714.0	58.4	236.0	0.8	60.0	22.7	16.0	150.0	45.0	74.4	0.0	0.0	27.0	13.4	0.0	0.0	0.0	0.0	0.0	0.0	1098.0	39.0	
GULF																							
2008 FTE-3	2660.0	100	994.8	81	347.0	-44	54.0	2	288.3	31	152.1	6	267.1	-1	67.0	0	1.3	-1	0.0	0	4831.6	173	
2009 FTE-1A	2760.0	3.8	1076.0	8.2	303.0	-12.7	56.0	3.7	319.0	10.6	158.0	3.9	266.0	-0.4	67.0	0.0	0.0	-100.0	0.0	0.0	5005.0	3.6	
HILL																							
2008 FTE-3	9587.5	1012	2789.2	246	1986.7	192	128.8	56	369.7	1	1716.1	0	227.6	0	61.5	1	13.6	0	0.0	0	16880.7	1508	
2009 FTE-1A	10599.0	10.6	3035.0	8.8	2179.0	9.7	185.0	43.6	371.0	0.4	1716.0	0.0	228.0	0.2	62.0	0.8	14.0	2.9	0.0	0.0	18389.0	8.9	
INDR																							
2008 FTE-3	5007.7	541	2685.5	8	590.5	86	116.7	8	1170.4	0	1019.5	2	14.3	0	1167.2	0	326.3	1	0.0	0	12098.1	644	
2009 FTE-1A	5549.0	10.8	2693.0	0.3	676.0	14.5	125.0	7.1	1170.0	0.0	1021.0	0.1	14.0	-2.1	1167.0	0.0	327.0	0.2	0.0	0.0	12742.0	5.3	
LCTY																							
2008 FTE-3	1265.1	-21	378.9	2	164.6	-10	15.4	13	396.5	1	0.0	0	111.4	0	0.6	-1	0.5	-1	2.7	-3	2335.7	-20	
2009 FTE-1A	1244.0	-1.7	381.0	0.6	155.0	-5.8	28.0	81.8	397.0	0.1	0.0	0.0	111.0	-0.4	0.0	-100.0	0.0	-100.0	0.0	-100.0	2316.0	-0.8	
LSUM																							
2008 FTE-3	1616.2	176	608.9	-3	269.1	6	40.1	15	0.0	0	0.0	0	46.1	1	0.0	0	0.0	0	0.0	0	2580.4	195	
2009 FTE-1A	1792.0	10.9	606.0	-0.5	275.0	2.2	55.0	37.2	0.0	0.0	0.0	0.0	47.0	2.0	0.0	0.0	0.0	0.0	0.0	0.0	2775.0	7.5	
MANA																							
2008 FTE-3	5871.7	641	615.9	-55	992.0	89	83.9	-2	0.0	0	0.0	0	109.8	0	39.8	0	4.5	2	0.0	0	7717.6	675	
2009 FTE-1A	6513.0	10.9	561.0	-8.9	1081.0	9.0	82.0	-2.3	0.0	0.0	0.0	0.0	110.0	0.2	40.0	0.5	6.0	33.3	0.0	0.0	8393.0	8.8	
MIAM																							
2008 FTE-3	28626.9	3800	8947.2	-3583	5693.3	2909	76.6	9	894.7	-200	703.6	201	1641.5	-1	3276.4	-199	1200.2	201	1778.5	1	52838.9	3138	
2009 FTE-1A	32427.0	13.3	5364.0	-40.0	8602.0	51.1	86.0	12.3	695.0	-22.3	905.0	28.6	1641.0	0.0	3077.0	-6.1	1401.0	16.7	1779.0	0.0	55977.0	5.9	

Sources: 2007-2008 Student Data Base FTE-3 - Unweighted
2008-2009 Estimates FTE-1A (Division Estimates with college adjustments) - Unweighted
Advanced and Professional, Post Secondary Vocational, College Preparatory and EPI are calculated as 30 Credit Hour FTE.

FLORIDA COMMUNITY COLLEGE SYSTEM
Student Data Base FTE Report
2007-2008 FTE-3 Compared to the 2008-2009 FTE-1A (Division Estimates with college adjustments)

	Adv. & Prof.	Diff. Percent	Postsec. Voc.	Diff. Percent	College Prep	Diff. Percent	EPI	Diff. Percent	Postsec. Adult	Diff. Percent	Apprenticeship	Diff. Percent	CWE	Diff. Percent	Adult Basic	Diff. Percent	Adult S&G	Diff. Percent	Voc. Prep	Diff. Percent	Total FTE	Diff. Percent
NFLA																						
2008 FTE-3	509.0	-15	155.7	-30	110.2	-31	14.1	-5	102.7	0	0.0	0	52.5	1	9.8	0	1.7	-2	0.7	-1	956.4	-82
2009 FTE-1A	494.0	-2.9	126.0	-19.1	79.0	-28.3	9.0	-36.2	103.0	0.3	0.0	0.0	53.0	1.0	10.0	2.0	0.0	-100.0	0.0	-100.0	874.0	-8.6
NWFLA																						
2008 FTE-3	3599.0	227	689.2	62	311.5	26	76.8	-28	171.7	-1	0.0	0	37.9	1	161.0	0	41.6	1	0.0	0	5088.7	288
2009 FTE-1A	3826.0	6.3	751.0	9.0	337.0	8.2	49.0	-36.2	171.0	-0.4	0.0	0.0	39.0	2.9	161.0	0.0	43.0	3.4	0.0	0.0	5377.0	5.7
PALM																						
2008 FTE-3	11153.3	1667	1307.9	114	1401.5	196	66.8	22	914.0	0	1545.3	-211	235.4	1	0.0	0	0.0	0	0.0	0	16624.2	1788
2009 FTE-1A	12820.0	14.9	1422.0	8.7	1597.0	13.9	89.0	33.2	914.0	0.0	1334.0	-13.7	236.0	0.3	0.0	0.0	0.0	0.0	0.0	0.0	18412.0	10.8
PASC																						
2008 FTE-3	3076.6	161	1386.6	222	573.0	75	80.4	-5	351.4	-1	0.0	0	47.2	0	6.6	5	0.1	5	0.0	0	5521.9	462
2009 FTE-1A	3238.0	5.2	1609.0	16.0	648.0	13.1	75.0	-6.7	350.0	-0.4	0.0	0.0	47.0	-0.4	12.0	81.8	5.0	4900.0	0.0	0.0	5984.0	8.4
PENS																						
2008 FTE-3	4931.2	108	1749.6	-2	526.8	9	59.4	-15	375.1	52	0.0	0	49.6	0	308.0	60	375.2	62	14.6	2	8389.5	277
2009 FTE-1A	5039.0	2.2	1748.0	-0.1	536.0	1.7	44.0	-25.9	427.0	13.8	0.0	0.0	50.0	0.8	368.0	19.5	437.0	16.5	17.0	16.4	8666.0	3.3
POLK																						
2008 FTE-3	3163.5	440	1230.0	168	481.3	107	129.4	57	105.0	-12	0.0	0	203.9	0	0.0	0	0.0	0	0.0	0	5313.1	759
2009 FTE-1A	3603.0	13.9	1398.0	13.7	588.0	22.2	186.0	43.7	93.0	-11.4	0.0	0.0	204.0	0.0	0.0	0.0	0.0	0.0	0.0	0.0	6072.0	14.3
ST.J																						
2008 FTE-3	2301.6	274	784.3	16	304.8	73	86.2	52	127.0	1	399.6	-8	42.6	-1	122.1	-40	22.2	-14	0.0	0	4190.4	354
2009 FTE-1A	2576.0	11.9	800.0	2.0	378.0	24.0	138.0	60.1	128.0	0.8	392.0	-1.9	42.0	-1.4	82.0	-32.8	8.0	-64.0	0.0	0.0	4544.0	8.4
ST.P																						
2008 FTE-3	9961.4	639	4074.7	104	1575.6	-60	0.0	0	143.9	1	0.0	0	330.7	0	0.0	0	0.0	0	0.0	0	16086.3	685
2009 FTE-1A	10600.0	6.4	4179.0	2.6	1516.0	-3.8	0.0	0.0	145.0	0.8	0.0	0.0	331.0	0.1	0.0	0.0	0.0	0.0	0.0	0.0	16771.0	4.3
SANF																						
2008 FTE-3	7892.2	133	2371.2	-16	1035.5	-45	41.8	13	156.7	4	177.7	12	70.6	16	104.3	0	18.6	0	4.8	0	11873.4	119
2009 FTE-1A	8025.0	1.7	2355.0	-0.7	991.0	-4.3	55.0	31.6	161.0	2.7	190.0	6.9	87.0	23.2	104.0	-0.3	19.0	2.2	5.0	4.2	11992.0	1.0
SEMI																						
2008 FTE-3	5088.2	615	2338.4	235	880.0	62	40.4	5	302.4	53	814.5	60	11.1	74	623.7	45	541.9	-11	27.9	2	10668.5	1139
2009 FTE-1A	5703.0	12.1	2573.0	10.0	942.0	7.0	45.0	11.4	355.0	17.4	874.0	7.3	85.0	665.8	669.0	7.3	531.0	-2.0	30.0	7.5	11807.0	10.7
SFLA																						
2008 FTE-3	1059.6	106	154.5	22	115.2	19	14.8	-6	490.6	0	157.5	1	80.3	0	464.3	1	74.2	1	0.0	0	2611.0	143
2009 FTE-1A	1166.0	10.0	176.0	13.9	134.0	16.3	9.0	-39.2	491.0	0.1	158.0	0.3	80.0	-0.4	465.0	0.2	75.0	1.1	0.0	0.0	2754.0	5.5
TALL																						
2008 FTE-3	7809.1	326	1249.7	-24	1050.7	105	26.8	-19	285.2	-43	0.0	14	863.8	73	90.5	12	79.8	-25	0.0	0	11455.6	419
2009 FTE-1A	8135.0	4.2	1226.0	-1.9	1156.0	10.0	8.0	-70.1	242.0	-15.1	14.0	0.0	937.0	8.5	102.0	12.7	55.0	-31.1	0.0	0.0	11875.0	3.7
VALE																						
2008 FTE-3	15581.7	1786	5294.7	488	2141.6	164	78.2	100	279.1	0	0.0	0	440.5	1	0.0	0	0.0	0	0.0	0	23815.8	2539
2009 FTE-1A	17368.0	11.5	5783.0	9.2	2306.0	7.7	178.0	127.6	279.0	0.0	0.0	0.0	441.0	0.1	0.0	0.0	0.0	0.0	0.0	0.0	26355.0	10.7
SYST TOTAL																						
2008 FTE-3	175603.5	17148	56901.1	-765	29004.4	4386	1768.6	226	10626.0	-105	8439.8	9	9302.9	191	8599.6	-206	3385.8	122	1903.0	-6	305534.7	21001
2009 FTE-1A	192752.0	9.8	56136.0	-1.3	33390.0	15.1	1995.0	12.8	10521.0	-1.0	8449.0	0.1	9494.0	2.1	8394.0	-2.4	3508.0	3.6	1897.0	-0.3	326536.0	6.9

Sources: 2007-2008 Student Data Base FTE-3 - Unweighted
2008-2009 Estimates FTE-1A (Division Estimates with college adjustments) - Unweighted

Note: Advanced and Professional, Post Secondary Vocational, College Preparatory and EPI are calculated as 30 Credit Hour FTE.

FLORIDA COMMUNITY COLLEGE SYSTEM
Student Data Base FTE Report
2008-2009 FTE-1 (Division Estimates) compared to the 2008-2009 FTE-1A (Division Estimates with College Adjustments)

	Adv. & Prof.	Diff. Percent	Postsec. Voc.	Diff. Percent	College Prep	Diff. Percent	EPI	Diff. Percent	Postsec. Adult	Diff. Percent	Apprenticeship	Diff. Percent	CWE	Diff. Percent	Adult Basic	Diff. Percent	Adult S&G	Diff. Percent	Voc. Prep	Diff. Percent	Total FTE	Diff. Percent	
BREV																							
2009 FTE-1	6647	0	2449	0	776	0	70	0	688	0	527	0	124	0	0	0	0	0	0	0	0	11281	0
2009 FTE-1A	6647	0.0	2449	0.0	776	0.0	70	0.0	688	0.0	527	0.0	124	0.0	0	0.0	0	0.0	0	0.0	0	11281	0.0
BROW																							
2009 FTE-1	13682	90	6047	90	3661	90	98	2	505	30	0	0	267	10	0	0	0	0	0	0	0	24260	312
2009 FTE-1A	13772	0.7	6137	1.5	3751	2.5	100	2.0	535	5.9	0	0.0	277	3.7	0	0.0	0	0.0	0	0.0	0	24572	1.3
CFLA																							
2009 FTE-1	3045	72	1077	-30	574	60	47	0	478	-42	0	0	178	0	66	0	11	0	2	0	0	5478	60
2009 FTE-1A	3117	2.4	1047	-2.8	634	10.5	47	0.0	436	-8.8	0	0.0	178	0.0	66	0.0	11	0.0	2	0.0	0	5538	1.1
CHIP																							
2009 FTE-1	1076	0	220	0	130	0	0	0	197	0	9	0	40	0	0	0	0	0	10	0	0	1682	0
2009 FTE-1A	1076	0.0	220	0.0	130	0.0	0	0.0	197	0.0	9	0.0	40	0.0	0	0.0	0	0.0	10	0.0	0	1682	0.0
DAYT																							
2009 FTE-1	6276	201	2578	58	1073	35	78	-18	757	12	641	-68	68	13	932	-89	410	-98	23	-8	0	12836	38
2009 FTE-1A	6477	3.2	2636	2.2	1108	3.3	60	-23.1	769	1.6	573	-10.6	81	19.1	843	-9.5	312	-23.9	15	-34.8	0	12874	0.3
EDIS																							
2009 FTE-1	5861	0	1865	0	972	0	18	0	0	0	0	0	52	0	0	0	0	0	0	0	0	8768	0
2009 FTE-1A	5861	0.0	1865	0.0	972	0.0	18	0.0	0	0.0	0	0.0	52	0.0	0	0.0	0	0.0	0	0.0	0	8768	0.0
FJAX																							
2009 FTE-1	12116	-505	3756	-72	1596	-116	226	-44	1040	0	578	0	3666	0	1099	0	264	0	39	0	0	24380	-737
2009 FTE-1A	11611	-4.2	3684	-1.9	1480	-7.3	182	-19.5	1040	0.0	578	0.0	3666	0.0	1099	0.0	264	0.0	39	0.0	0	23643	-3.0
FKEY																							
2009 FTE-1	532	182	209	27	56	4	16	0	27	18	0	0	25	2	0	0	0	0	0	0	0	865	233
2009 FTE-1A	714	34.2	236	12.9	60	7.1	16	0.0	45	66.7	0	0.0	27	8.0	0	0.0	0	0.0	0	0.0	0	1098	26.9
GULF																							
2009 FTE-1	2710	50	1036	40	303	0	61	-5	288	31	153	5	266	0	67	0	0	0	0	0	0	4884	121
2009 FTE-1A	2760	1.8	1076	3.9	303	0.0	56	-8.2	319	10.8	158	3.3	266	0.0	67	0.0	0	0.0	0	0.0	0	5005	2.5
HILL																							
2009 FTE-1	10599	0	3035	0	2179	0	185	0	371	0	1716	0	228	0	62	0	14	0	0	0	0	18389	0
2009 FTE-1A	10599	0.0	3035	0.0	2179	0.0	185	0.0	371	0.0	1716	0.0	228	0.0	62	0.0	14	0.0	0	0.0	0	18389	0.0
INDR																							
2009 FTE-1	5549	0	2693	0	676	0	125	0	1170	0	1021	0	14	0	1167	0	327	0	0	0	0	12742	0
2009 FTE-1A	5549	0.0	2693	0.0	676	0.0	125	0.0	1170	0.0	1021	0.0	14	0.0	1167	0.0	327	0.0	0	0.0	0	12742	0.0
LCTY																							
2009 FTE-1	1244	0	381	0	155	0	28	0	397	0	0	0	111	0	0	0	0	0	0	0	0	2316	0
2009 FTE-1A	1244	0.0	381	0.0	155	0.0	28	0.0	397	0.0	0	0.0	111	0.0	0	0.0	0	0.0	0	0.0	0	2316	0.0
LSUM																							
2009 FTE-1	1792	0	606	0	275	0	55	0	0	0	0	0	47	0	0	0	0	0	0	0	0	2775	0
2009 FTE-1A	1792	0.0	606	0.0	275	0.0	55	0.0	0	0.0	0	0.0	47	0.0	0	0.0	0	0.0	0	0.0	0	2775	0.0
MANA																							
2009 FTE-1	6513	0	561	0	1081	0	82	0	0	0	0	0	110	0	40	0	6	0	0	0	0	8393	0
2009 FTE-1A	6513	0.0	561	0.0	1081	0.0	82	0.0	0	0.0	0	0.0	110	0.0	40	0.0	6	0.0	0	0.0	0	8393	0.0
MIAM																							
2009 FTE-1	30327	2100	5964	-600	7702	900	86	0	895	-200	705	200	1641	0	3277	-200	1201	200	1779	0	0	53577	2400
2009 FTE-1A	32427	6.9	5364	-10.1	8602	11.7	86	0.0	695	-22.3	905	28.4	1641	0.0	3077	-6.1	1401	16.7	1779	0.0	0	55977	4.5

Sources: 2008-2009 Estimates FTE-1 (Division Estimates) - Unweighted
2008-2009 Estimates FTE-1A (Division Estimates with college adjustments) - Unweighted
Advanced and Professional, Post Secondary Vocational, College Preparatory and EPI are calculated as 30 Credit Hour FTE.

FLORIDA COMMUNITY COLLEGE SYSTEM
Student Data Base FTE Report
2008-2009 FTE-1 (Division Estimates) compared to the 2008-2009 FTE-1A (Division Estimates with College Adjustments)

	Adv. & Prof.	Diff. Percent	Postsec. Voc.	Diff. Percent	College Prep	Diff. Percent	EPI	Diff. Percent	Postsec. Adult	Diff. Percent	Apprenticeship	Diff. Percent	CWE	Diff. Percent	Adult Basic	Diff. Percent	Adult S&G	Diff. Percent	Voc. Prep	Diff. Percent	Total FTE	Diff. Percent	
NFLA																							
2009 FTE-1	494	0	126	0	79	0	9	0	103	0	0	0	53	0	10	0	0	0	0	0	0	874	0
2009 FTE-1A	494	0.0	126	0.0	79	0.0	9	0.0	103	0.0	0	0.0	53	0.0	10	0.0	0	0.0	0	0.0	0	874	0.0
NWFLA																							
2009 FTE-1	3826	0	751	0	337	0	49	0	171	0	0	0	39	0	161	0	43	0	0	0	0	5377	0
2009 FTE-1A	3826	0.0	751	0.0	337	0.0	49	0.0	171	0.0	0	0.0	39	0.0	161	0.0	43	0.0	0	0.0	0	5377	0.0
PALM																							
2009 FTE-1	12593	227	1422	0	1538	59	95	-6	914	0	1545	-211	236	0	0	0	0	0	0	0	0	18343	69
2009 FTE-1A	12820	1.8	1422	0.0	1597	3.8	89	-6.3	914	0.0	1334	-13.7	236	0.0	0	0.0	0	0.0	0	0.0	0	18412	0.4
PASC																							
2009 FTE-1	3189	49	1609	0	648	0	165	-90	350	0	0	0	47	0	12	0	5	0	0	0	0	6025	-41
2009 FTE-1A	3238	1.5	1609	0.0	648	0.0	75	-54.5	350	0.0	0	0.0	47	0.0	12	0.0	5	0.0	0	0.0	0	5984	-0.7
PENS																							
2009 FTE-1	5035	4	1772	-24	532	4	52	-8	374	53	0	0	50	0	308	60	376	61	17	0	0	8516	150
2009 FTE-1A	5039	0.1	1748	-1.4	536	0.8	44	-15.4	427	14.2	0	0.0	50	0.0	368	19.5	437	16.2	17	0.0	0	8666	1.8
POLK																							
2009 FTE-1	3573	30	1373	25	566	22	306	-120	104	-11	0	0	204	0	0	0	0	0	0	0	0	6126	-54
2009 FTE-1A	3603	0.8	1398	1.8	588	3.9	186	-39.2	93	-10.6	0	0.0	204	0.0	0	0.0	0	0.0	0	0.0	0	6072	-0.9
ST.J																							
2009 FTE-1	2391	185	779	21	325	53	141	-3	128	0	399	-7	42	0	122	-40	22	-14	0	0	0	4349	195
2009 FTE-1A	2576	7.7	800	2.7	378	16.3	138	-2.1	128	0.0	392	-1.8	42	0.0	82	-32.8	8	-63.6	0	0.0	0	4544	4.5
ST.P																							
2009 FTE-1	10600	0	4179	0	1516	0	0	0	145	0	0	0	331	0	0	0	0	0	0	0	0	16771	0
2009 FTE-1A	10600	0.0	4179	0.0	1516	0.0	0	0.0	145	0.0	0	0.0	331	0.0	0	0.0	0	0.0	0	0.0	0	16771	0.0
SANF																							
2009 FTE-1	7930	95	2340	15	979	12	47	8	156	5	190	0	71	16	104	0	19	0	0	5	0	11836	156
2009 FTE-1A	8025	1.2	2355	0.6	991	1.2	55	17.0	161	3.2	190	0.0	87	22.5	104	0.0	19	0.0	5	0.0	0	11992	1.3
SEMI																							
2009 FTE-1	5828	-125	2679	-106	927	15	42	3	302	53	814	60	24	61	624	45	542	-11	29	1	0	11811	-4
2009 FTE-1A	5703	-2.1	2573	-4.0	942	1.6	45	7.1	355	17.5	874	7.4	85	254.2	669	7.2	531	-2.0	30	3.4	0	11807	0.0
SFLA																							
2009 FTE-1	1166	0	176	0	134	0	9	0	491	0	158	0	80	0	465	0	75	0	0	0	0	2754	0
2009 FTE-1A	1166	0.0	176	0.0	134	0.0	9	0.0	491	0.0	158	0.0	80	0.0	465	0.0	75	0.0	0	0.0	0	2754	0.0
TALL																							
2009 FTE-1	8178	-43	1237	-11	1169	-13	10	-2	285	-43	6	8	864	73	91	11	80	-25	0	0	0	11920	-45
2009 FTE-1A	8135	-0.5	1226	-0.9	1156	-1.1	8	-20.0	242	-15.1	14	133.3	937	8.4	102	12.1	55	-31.3	0	0.0	0	11875	-0.4
VALE																							
2009 FTE-1	17368	0	5783	0	2306	0	178	0	279	0	0	0	441	0	0	0	0	0	0	0	0	26355	0
2009 FTE-1A	17368	0.0	5783	0.0	2306	0.0	178	0.0	279	0.0	0	0.0	441	0.0	0	0.0	0	0.0	0	0.0	0	26355	0.0
SYST TOTAL																							
2009 FTE-1	190140	2612	56703	-567	32265	1125	2278	-283	10615	-94	8462	-13	9319	175	8607	-213	3395	113	1899	-2	0	323683	2853
2009 FTE-1A	192752	1.4	56136	-1.0	33390	3.5	1995	-12.4	10521	-0.9	8449	-0.2	9494	1.9	8394	-2.5	3508	3.3	1897	-0.1	0	326536	0.9

Sources: 2008-2009 Estimates FTE-1 (Division Estimates) - Unweighted
2008-2009 Estimates FTE-1A (Division Estimates with college adjustments) - Unweighted

Note: Advanced and Professional, Post Secondary Vocational, College Preparatory and EPI are calculated as 30 Credit Hour FTE.

FLORIDA COMMUNITY COLLEGE SYSTEM
Student Data Base FTE Report
2008-2009 FTE Projections Compared to the 2008-2009 FTE-1A Division Estimates with College Adjustments

	Adv. & Prof.	Diff. Percent	Postsec. Voc.	Diff. Percent	College Prep	Diff. Percent	EPI	Diff. Percent	Postsec. Adult	Diff. Percent	Apprenticeship	Diff. Percent	CWE	Diff. Percent	Adult Basic	Diff. Percent	Adult S&G	Diff. Percent	Voc. Prep	Diff. Percent	Total FTE	Diff. Percent	
BREV																							
2009 PRJ	6507	140	2377	72	803	-27	61	9	710	-22	541	-14	127	-3	0	0	0	0	0	0	0	11126	155
2009 FTE-1A	6647	2.2	2449	3.0	776	-3.4	70	14.8	688	-3.1	527	-2.6	124	-2.4	0	0.0	0	0.0	0	0.0	0	11281	1.4
BROW																							
2009 PRJ	13916	-144	6204	-67	3838	-87	86	14	579	-44	0	0	325	-48	0	0	0	0	0	0	0	24948	-376
2009 FTE-1A	13772	-1.0	6137	-1.1	3751	-2.3	100	16.3	535	-7.6	0	0.0	277	-14.8	0	0.0	0	0.0	0	0.0	0	24572	-1.5
CFLA																							
2009 PRJ	2889	228	1097	-50	525	109	55	-8	525	-89	0	0	172	6	66	0	11	0	2	0	5342	196	
2009 FTE-1A	3117	7.9	1047	-4.6	634	20.8	47	-14.5	436	-17.0	0	0.0	178	3.5	66	0.0	11	0.0	2	0.0	5538	3.7	
CHIP																							
2009 PRJ	1002	74	225	-5	102	28	0	0	226	-29	9	0	40	0	0	0	0	0	11	-1	1615	67	
2009 FTE-1A	1076	7.4	220	-2.2	130	27.5	0	0.0	197	-12.8	9	0.0	40	0.0	0	0.0	0	0.0	10	-9.1	1682	4.1	
DAYT																							
2009 PRJ	6526	-49	2685	-49	1227	-119	81	-21	817	-48	642	-69	64	17	938	-95	461	-149	22	-7	13463	-589	
2009 FTE-1A	6477	-0.8	2636	-1.8	1108	-9.7	60	-25.9	769	-5.9	573	-10.7	81	26.6	843	-10.1	312	-32.3	15	-31.8	12874	-4.4	
EDIS																							
2009 PRJ	5499	362	1814	51	944	28	111	-93	12	-12	0	0	53	-1	0	0	0	0	0	0	8433	335	
2009 FTE-1A	5861	6.6	1865	2.8	972	3.0	18	-83.8	0	-100.0	0	0.0	52	-1.9	0	0.0	0	0.0	0	0.0	8768	4.0	
FJAX																							
2009 PRJ	10485	1126	3508	176	1418	62	156	26	1075	-35	595	-17	3747	-81	1208	-109	289	-25	37	2	22518	1125	
2009 FTE-1A	11611	10.7	3684	5.0	1480	4.4	182	16.7	1040	-3.3	578	-2.9	3666	-2.2	1099	-9.0	264	-8.7	39	5.4	23643	5.0	
FKEY																							
2009 PRJ	474	240	296	-60	49	11	6	10	26	19	0	0	23	4	0	0	0	0	0	0	874	224	
2009 FTE-1A	714	50.6	236	-20.3	60	22.4	16	166.7	45	73.1	0	0.0	27	17.4	0	0.0	0	0.0	0	0.0	1098	25.6	
GULF																							
2009 PRJ	2793	-33	1045	31	375	-72	54	2	290	29	175	-17	283	-17	70	-3	2	-2	0	0	5087	-82	
2009 FTE-1A	2760	-1.2	1076	3.0	303	-19.2	56	3.7	319	10.0	158	-9.7	266	-6.0	67	-4.3	0	-100.0	0	0.0	5005	-1.6	
HILL																							
2009 PRJ	9911	688	2877	158	2062	117	133	52	434	-63	1712	4	232	-4	62	0	14	0	0	0	17437	952	
2009 FTE-1A	10599	6.9	3035	5.5	2179	5.7	185	39.1	371	-14.5	1716	0.2	228	-1.7	62	0.0	14	0.0	0	0.0	18389	5.5	
INDR																							
2009 PRJ	5408	141	2748	-55	608	68	159	-34	1196	-26	1048	-27	14	0	1170	-3	329	-2	0	0	12680	62	
2009 FTE-1A	5549	2.6	2693	-2.0	676	11.2	125	-21.4	1170	-2.2	1021	-2.6	14	0.0	1167	-0.3	327	-0.6	0	0.0	12742	0.5	
LCTY																							
2009 PRJ	1241	3	391	-10	162	-7	15	13	410	-13	0	0	111	0	0	0	0	0	3	-3	2333	-17	
2009 FTE-1A	1244	0.2	381	-2.6	155	-4.3	28	86.7	397	-3.2	0	0.0	111	0.0	0	0.0	0	0.0	0	-100.0	2316	-0.7	
LSUM																							
2009 PRJ	1681	111	633	-27	279	-4	41	14	0	0	0	0	48	-1	0	0	0	0	0	0	2682	93	
2009 FTE-1A	1792	6.6	606	-4.3	275	-1.4	55	34.1	0	0.0	0	0.0	47	-2.1	0	0.0	0	0.0	0	0.0	2775	3.5	
MANA																							
2009 PRJ	6194	319	651	-90	1048	33	93	-11	0	0	0	0	123	-13	37	3	5	1	0	0	8151	242	
2009 FTE-1A	6513	5.2	561	-13.8	1081	3.1	82	-11.8	0	0.0	0	0.0	110	-10.6	40	8.1	6	20.0	0	0.0	8393	3.0	
MIAM																							
2009 PRJ	25599	6828	9989	-4625	11846	-3244	83	3	956	-261	755	150	1759	-118	3523	-446	1303	98	1910	-131	57723	-1746	
2009 FTE-1A	32427	26.7	5364	-46.3	8602	-27.4	86	3.6	695	-27.3	905	19.9	1641	-6.7	3077	-12.7	1401	7.5	1779	-6.9	55977	-3.0	

Sources: 2008-2009 FTE Projections (Division Projections with college adjustments) - Unweighted
2008-2009 Estimates FTE-1A (Division Estimates with college adjustments) - Unweighted
Advanced and Professional, Post Secondary Vocational, College Preparatory and EPI are calculated as 30 Credit Hour FTE.

FLORIDA COMMUNITY COLLEGE SYSTEM
Student Data Base FTE Report
2008-2009 FTE Projections Compared to the 2008-2009 FTE-1A Division Estimates with College Adjustments

	Adv. & Prof.	Diff. Percent	Postsec. Voc.	Diff. Percent	College Prep	Diff. Percent	EPI	Diff. Percent	Postsec. Adult	Diff. Percent	Apprenticeship	Diff. Percent	CWE	Diff. Percent	Adult Basic	Diff. Percent	Adult S&G	Diff. Percent	Voc. Prep	Diff. Percent	Total FTE	Diff. Percent	
NFLA																							
2009 PRJ	510	-16	157	-31	112	-33	14	-5	130	-27	0	0	42	11	10	0	2	-2	0	0	977	-103	
2009 FTE-1A	494	-3.1	126	-19.7	79	-29.5	9	-35.7	103	-20.8	0	0.0	53	26.2	10	0.0	0	-100.0	0	0.0	874	-10.5	
NWFLA																							
2009 PRJ	3715	111	686	65	310	27	76	-27	171	0	0	0	38	1	160	1	42	1	0	0	5198	179	
2009 FTE-1A	3826	3.0	751	9.5	337	8.7	49	-35.5	171	0.0	0	0.0	39	2.6	161	0.6	43	2.4	0	0.0	5377	3.4	
PALM																							
2009 PRJ	12473	347	1383	39	1576	21	77	12	868	46	1519	-185	207	29	0	0	0	0	0	0	18103	309	
2009 FTE-1A	12820	2.8	1422	2.8	1597	1.3	89	15.6	914	5.3	1334	-12.2	236	14.0	0	0.0	0	0.0	0	0.0	18412	1.7	
PASC																							
2009 PRJ	3273	-35	1473	136	609	39	72	3	360	-10	0	0	46	1	11	1	3	2	0	0	5847	137	
2009 FTE-1A	3238	-1.1	1609	9.2	648	6.4	75	4.2	350	-2.8	0	0.0	47	2.2	12	9.1	5	66.7	0	0.0	5984	2.3	
PENS																							
2009 PRJ	5114	-75	1966	-218	548	-12	63	-19	478	-51	0	0	66	-16	320	48	386	51	15	2	8956	-290	
2009 FTE-1A	5039	-1.5	1748	-11.1	536	-2.2	44	-30.2	427	-10.7	0	0.0	50	-24.2	368	15.0	437	13.2	17	13.3	8666	-3.2	
POLK																							
2009 PRJ	3402	201	1321	77	518	70	138	48	112	-19	0	0	199	5	0	0	0	0	0	0	5690	382	
2009 FTE-1A	3603	5.9	1398	5.8	588	13.5	186	34.8	93	-17.0	0	0.0	204	2.5	0	0.0	0	0.0	0	0.0	6072	6.7	
ST.J																							
2009 PRJ	2530	46	860	-60	339	39	92	46	130	-2	400	-8	48	-6	64	18	15	-7	0	0	4478	66	
2009 FTE-1A	2576	1.8	800	-7.0	378	11.5	138	50.0	128	-1.5	392	-2.0	42	-12.5	82	28.1	8	-46.7	0	0.0	4544	1.5	
ST.P																							
2009 PRJ	10459	141	4279	-100	1576	-60	0	0	85	60	0	0	331	0	0	0	0	0	0	0	16730	41	
2009 FTE-1A	10600	1.3	4179	-2.3	1516	-3.8	0	0.0	145	70.6	0	0.0	331	0.0	0	0.0	0	0.0	0	0.0	16771	0.2	
SANF																							
2009 PRJ	8127	-102	2443	-88	1078	-87	43	12	162	-1	183	7	72	15	133	-29	29	-10	5	0	12275	-283	
2009 FTE-1A	8025	-1.3	2355	-3.6	991	-8.1	55	27.9	161	-0.6	190	3.8	87	20.8	104	-21.8	19	-34.5	5	0.0	11992	-2.3	
SEMI																							
2009 PRJ	5635	68	2470	103	995	-53	41	4	343	12	900	-26	98	-13	669	0	538	-7	27	3	11716	91	
2009 FTE-1A	5703	1.2	2573	4.2	942	-5.3	45	9.8	355	3.5	874	-2.9	85	-13.3	669	0.0	531	-1.3	30	11.1	11807	0.8	
SFLA																							
2009 PRJ	1124	42	159	17	115	19	15	-6	512	-21	157	1	82	-2	479	-14	72	3	0	0	2715	39	
2009 FTE-1A	1166	3.7	176	10.7	134	16.5	9	-40.0	491	-4.1	158	0.6	80	-2.4	465	-2.9	75	4.2	0	0.0	2754	1.4	
TALL																							
2009 PRJ	8121	14	1299	-73	1072	84	10	-2	296	-54	17	-3	994	-57	101	1	90	-35	0	0	12000	-125	
2009 FTE-1A	8135	0.2	1226	-5.6	1156	7.8	8	-20.0	242	-18.2	14	-17.6	937	-5.7	102	1.0	55	-38.9	0	0.0	11875	-1.0	
VALE																							
2009 PRJ	16532	836	5622	161	2270	36	83	95	296	-17	0	0	511	-70	0	0	0	0	0	0	25314	1041	
2009 FTE-1A	17368	5.1	5783	2.9	2306	1.6	178	114.5	279	-5.7	0	0.0	441	-13.7	0	0.0	0	0.0	0	0.0	26355	4.1	
SYST TOTAL																							
2009 PRJ	181140	11612	60658	-4522	36404	-3014	1858	137	11199	-678	8653	-204	9855	-361	9021	-627	3591	-83	2032	-135	324411	2125	
2009 FTE-1A	192752	6.4	56136	-7.5	33390	-8.3	1995	7.4	10521	-6.1	8449	-2.4	9494	-3.7	8394	-7.0	3508	-2.3	1897	-6.6	326536	0.7	

Sources: 2008-2009 FTE Projections (Division Projections with college adjustments) - Unweighted
2008-2009 Estimates FTE-1A (Division Estimates with college adjustments) - Unweighted

Note: Advanced and Professional, Post Secondary Vocational, College Preparatory and EPI are calculated as 30 Credit Hour FTE.

Brevard

	A&P	PSV	CP	EPI	PSAV	APP	CWE	AB	ASG	VP	TOT
2008											

All: No change.

Broward

	A&P	PSV	CP	EPI	PSAV	APP	CWE	AB	ASG	VP	TOT
2008	90	90	90	2	30	0	10	0	0	0	312

All: Based on current enrollment trends, increased recruitment, initiatives for student retention, and fully on-line AA degree program.

Central Florida

	A&P	PSV	CP	EPI	PSAV	APP	CWE	AB	ASG	VP	TOT
2008	72	-30	60	0	-42	0	0	0	0	0	60

All: Based on percent growth over last year and historic drop in spring enrollment.

Chipola

	A&P	PSV	CP	EPI	PSAV	APP	CWE	AB	ASG	VP	TOT
2008											

All: No change. Current enrollment is comparable to estimate.

Daytona

	A&P	PSV	CP	EPI	PSAV	APP	CWE	AB	ASG	VP	TOT
2008	201	58	35	-18	12	-68	13	-89	-98	-8	38

A&P: Expanded dual enrollment courses.

A&P, CP: 2 new BS degrees in Education. Lower division enrollment expected.

A&P, PSV: New BAS program for Federal Air Marshalls, partnered with Homeland Security. Criminal Justice AS program has partnered with Daytona Beach Police Dept.

SUS cap will increase enrollment.

PSV: New Baking and Pastry Certificate.

A&P, PSV, CP, PSAV: Revised course schedule. 14 week session, 2 seven week sessions, 2 week mini-mester, and 20% increase in online courses.

VP, AB, ASG: Decline in enrollment.

CWE: Current state of economy and resulting re-training and/or re-certification.

EPI: Loss of grant funding to cover student fees.

APPR: Lack of jobs in those programs related to the economy.

Edison

	A&P	PSV	CP	EPI	PSAV	APP	CWE	AB	ASG	VP	TOT
2008											

All: No change. Estimates are consistent with 6 year projections.

FCCJ

	A&P	PSV	CP	EPI	PSAV	APP	CWE	AB	ASG	VP	TOT
2008	-505	-72	-116	-44	0	0	0	0	0	0	-737

All: Model does not account for drops for non-payment, student drops or withdraws and/or other externalities.

Florida Keys

	A&P	PSV	CP	EPI	PSAV	APP	CWE	AB	ASG	VP	TOT
2008	182	27	4	0	18	0	2	0	0	0	233

All: 40% increase in enrollment over last year. Changes in course scheduling and advising.

PSAV: Additional classes in Law Enforcement Academy in spring.

Gulf Coast

	A&P	PSV	CP	EPI	PSAV	APP	CWE	AB	ASG	VP	TOT
2008	50	40	0	-5	31	5	0	0	0	0	121

A&P, PSV: New distance education courses and redesigned others. Doubled enrollment in AAS Respiratory Care. Changed scheduling from M/W/F and T/TH to M/W and T/TH with longer classes on Friday. Will allow students to come to campus 2 days per week and carry full load.

A&P: Offering 8 week courses.

PSV: New EMT, MRI and Introduction to Health classes. Increased the number of Dual Enrollment classes.

EPI: Demand for teachers has decreased due to the reduced funding for elementary and secondary schools. SUCCEED, FL grant funding has ended.

PSAV: Increase in Dental Assisting. New on-line courses in Fire Science. Closing of CCA jail in the beginning of the year reduced enrollment, but local Sheriff's office is taking over and 13 classes will be offered in Fall. Increased hours needed to complete a certificate in Fire Fighting.

Hillsborough

	A&P	PSV	CP	EPI	PSAV	APP	CWE	AB	ASG	VP	TOT
2008											

All: No change.

Indian River

	A&P	PSV	CP	EPI	PSAV	APP	CWE	AB	ASG	VP	TOT
2008											

All: No change.

Lake City

	A&P	PSV	CP	EPI	PSAV	APP	CWE	AB	ASG	VP	TOT
2008											

All: No change. Based on previous estimates and current enrollment trends.

Lake-Sumter

	A&P	PSV	CP	EPI	PSAV	APP	CWE	AB	ASG	VP	TOT
2008											

All: No change. Based on economy. Increase in A&P over FTE3 due to students staying close to home instead of going to a university. Increase in EPI due to local schools still growing and looking for teachers. Decrease in PSV and CWE because local employers are cutting back on training.

Manatee

	A&P	PSV	CP	EPI	PSAV	APP	CWE	AB	ASG	VP	TOT
2008											

All: No change. Based on enrollment trend.

Miami-Dade

	A&P	PSV	CP	EPI	PSAV	APP	CWE	AB	ASG	VP	TOT
2008	2100	-600	900	0	-200	200	0	-200	200	0	2400

All: FIU eliminated specific programs and freshmen cap. West Campus in high growth area with no other ed facility nearby. Adjusted distribution among program areas. EAP moved to CP due to state decision to classify EAP as CP. AB to ASG due to policy changes.

North Florida

	A&P	PSV	CP	EPI	PSAV	APP	CWE	AB	ASG	VP	TOT
2008											

All: No change. Current enrollment trends.

Northwest Florida

	A&P	PSV	CP	EPI	PSAV	APP	CWE	AB	ASG	VP	TOT
2008											

All: No change.

Palm Beach

	A&P	PSV	CP	EPI	PSAV	APP	CWE	AB	ASG	VP	TOT
2008	227	0	59	-6	0	-211	0	0	0	0	69

A&P, CP: Reflect current enrollment and expected return of students.
 EPI: Reduced offerings.
 APP: Reduction of enrollments due to economy and downturn in construction and housing starts.

Pasco-Hernando

	A&P	PSV	CP	EPI	PSAV	APP	CWE	AB	ASG	VP	TOT
2008	49	0	0	-90	0	0	0	0	0	0	-41

A&P: Based on enrollment trends.
 EPI: Reduction in classes offered in Spring.

Pensacola

	A&P	PSV	CP	EPI	PSAV	APP	CWE	AB	ASG	VP	TOT
2008	4	-24	4	-8	53	0	0	60	61	0	150

A&P, CP, PSAV, AB, ASG: Offering 4 sessions per term has changed enrollment pattern, which skews the model.
 EPI: SUCCEED grants ended.
 PSV: Reached maximum enrollment capacity in Nursing programs.
 AB, ASG: Reduction based on new funding formula for Adult Ed.

Polk

	A&P	PSV	CP	EPI	PSAV	APP	CWE	AB	ASG	VP	TOT
2008	30	25	22	-120	-11	0	0	0	0	0	-54

A&P, CP: New Center opening in January. Strong enrollment across FastTrack courses and additional capacities added after data submission. Local economy generates higher demand for workforce “retooling” options.
 PSV: Additional Allied Health capacities at new Center.
 PSAV: Reflects budget constraints in hiring and training of the local police force.
 EPI: Newness of program causes the model to skew the data.

St Johns River

	A&P	PSV	CP	EPI	PSAV	APP	CWE	AB	ASG	VP	TOT
2008	185	21	53	-3	0	-7	0	-40	-14	0	195

All: Due to growth and current enrollment. Expect growth to continue due to University enrollment caps.
 AB, ASG: Program reduction due to reduced hours classes are offered.

St Petersburg

	A&P	PSV	CP	EPI	PSAV	APP	CWE	AB	ASG	VP	TOT
2008											

All: No change. Based on current enrollment.

Santa Fe

	A&P	PSV	CP	EPI	PSAV	APP	CWE	AB	ASG	VP	TOT
2008	95	15	12	8	5	0	16	0	0	5	156

A&P: Current enrollment plus new Radiography AS cohort.
 PSV: New Health Sciences certificate programs.
 CP, EPI: Current enrollment and forecasted spring.
 PSAV: Current enrollment plus planned offerings in Spring.
 CWE: New program offerings.
 VP: Set to prior year enrollment.

Seminole

	A&P	PSV	CP	EPI	PSAV	APP	CWE	AB	ASG	VP	TOT
2008	-125	-106	15	3	53	60	61	45	-11	1	-4

A&P, PSV,ASG: Construction on largest campus.
 PSAV: Program expansions in Nursing at new campus.
 APP: New program in plumbing.
 CWE: Emphasis on growth at campus for Economic Development.
 AB: New markets.

South Florida

	A&P	PSV	CP	EPI	PSAV	APP	CWE	AB	ASG	VP	TOT
2008											

All: No change.

Tallahassee

	A&P	PSV	CP	EPI	PSAV	APP	CWE	AB	ASG	VP	TOT
2008	-43	-11	-13	-2	-43	8	73	11	-25	0	-45

All: Enrollment trend.

PSV: Policy change for students planning to transfer to a university. Students in the past could pursue a specialized AS or AAS, are now advised to pursue AA.

PSAV: Less training for state law enforcement agencies due to budget cuts.

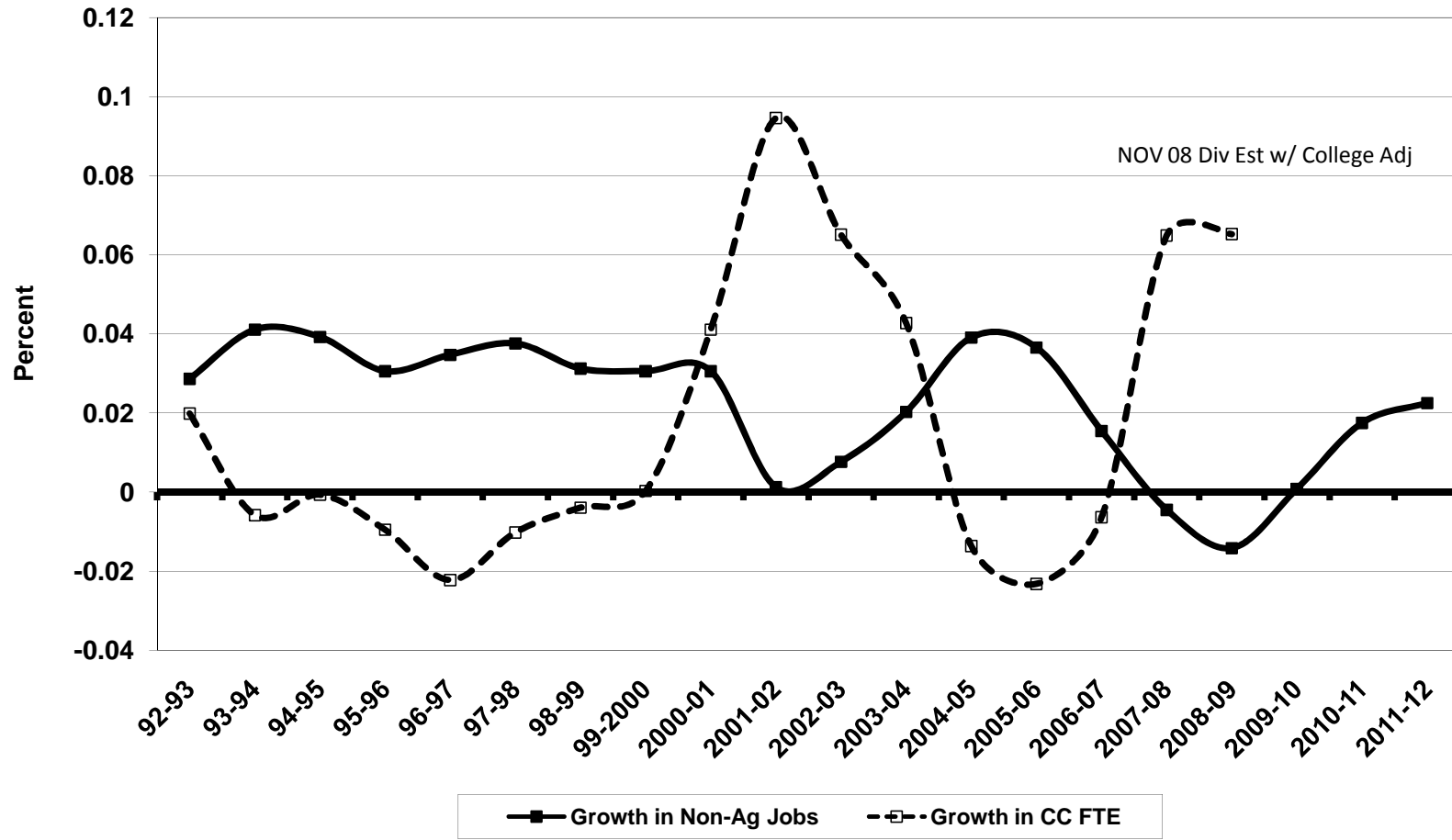
EPI: Discontinuation of the program. Estimate reflects remaining students.

Valencia

	A&P	PSV	CP	EPI	PSAV	APP	CWE	AB	ASG	VP	TOT
2008											

All: No change.

Compare Growth in Community College FTE with Growth in Non-Agricultural Florida Jobs



Community College Enrollment Estimating Conference
November 4, 2008

ACTION MINUTES

Principals attending:

Scott Kittel, Office of the Governor (Chair)
Amy Baker, Legislative Office of Economic & Demographic Research
Paul Bryant, Florida Senate
Mark Eggers, Florida House of Representatives

Presenters:

John Holdnak, Department of Education/Division of Community Colleges (DOE/CC)
Robert McMullen, DOE/CCTCMIS

Presentations:

John Holdnak briefly discussed the state college initiatives currently underway. Robert McMullen reviewed the Division Estimate with College Adjustments Full-Time-Equivalent (FTE) estimates for 2008-08, based on Final Summer and Beginning-of-Term Fall data. Beth Lines distributed a graph comparing growth in community college FTE and growth in Florida non-farm employment. See attached handouts for details.

Actions:

The Conference adopted the Division estimates with College Adjustments as recommended by the DOE/CC. The FY 2008-09 FTE estimates are used for the FY 2009-10 appropriation.

Consensus:

The Conference agreed to accept the FY 2008-09 FTE estimate with college adjustments. **November 2008 Consensus for FY 2008-09 is 326,536.0 FTE, based on 30 credit hours per FTE for Advanced & Professional (A&P), Postsecondary Vocational (PSV), College Prep and Education Preparation Institute (EPI) hours.** This is an increase of 21,001.3 FTE over the FY 2007-08 FTE total of 305,534.7 FTE. See handouts for details, including FTE based on 40 credit hours per FTE for A&P, PSV, College Prep & EPI hours. A table summarizing the consensus estimate is presented on the next page.

Conference principals requested historical data on upper-level enrollment at community colleges. The conference discussed adding estimates for upper-level enrollment to the conference in the future.

SUMMARY				2007-08 Final compared to 2008-09 NOV 08 (NEW) CONSENSUS	2007-08 Final compared to 2008-09 NOV 08 (NEW) CONSENSUS
PROGRAMS	2006-07 Final FTE	2007-08 Final FTE	2007-08 NOV 08 CONSENSUS Estimate (NEW)	Amount Change	Percent Change
A & P	164,530	175,603.5	192,752.0	17,148.5	9.8%
PSV	53,613	56,901.1	56,136.0	(765.1)	(1.3%)
COLLEGE PREP	27,087	29,004.4	33,390.0	4,385.6	15.1%
EPI	1,404	1,768.6	1,995.0	226.4	12.8%
PSAV	11,252	10,626.0	10,521.0	(105.0)	(1.0%)
SUBTOTAL FEE PAYING	257,885	273,903.6	294,794.0	20,890.4	7.6%
APPRENTICESHIP	8,302	8,439.8	8,449.0	9.2	0.1%
CWE	6,702	9,302.9	9,494.0	191.1	2.1%
SUBTOTAL W/O ADULT	272,889	291,646.3	312,737.0	21,090.7	7.2%
VOCATIONAL PREP	1,676	1,903.0	1,897.0	(6.0)	(0.3%)
ADULT EDUCATION	12,190	11,985.4	11,902.0	(83.4)	(0.7%)
SUBTOTAL ADULT	13,866	13,888.4	13,799.0	(89.4)	(0.6%)
TOTAL (ALL PGMS)	286,755	305,534.7	326,536.0	21,001.3	6.9%



[DOE Home](#) > [Accountability, Research & Measurement](#)



Accountability, Research & Measurement



Community College and Technical Center MIS

Eugene "Gene" Kovacs

Bureau Chief

1324 Turlington Building

325 West Gaines Street

Tallahassee, Florida 32399-0400

Phone: (850)245-9500

Fax: (850)245-9499

E-Mail: Gene.Kovacs@fldoe.org

Mission

Community College & Technical Center MIS (CCTCMIS) has assumed the combined functions of two previous entities - the **Bureau of Research and Information Systems (BRIS)** for community colleges and **Workforce Education Information Systems (WEIS)** for the technical centers. Information previously reported by either of these offices will now be available through CCTCMIS.

Mission: To collect and report all data pertaining to the operation of community colleges, and adult continuing, workforce and vocational education reported by the public school district technical centers.

This information is used to generate state and federal level reports, supply data to the Department of Education (DOE) Data Warehouse, provide for system Accountability, generate Performance Based Budgeting, and provide support to the Florida Legislature and the Florida State Board of Education.

CCTCMIS Directory

- [Bureau's Mission](#)
- [Publications/Reports](#)
- [CCTC Directory](#)
- [Comm. College Data Dictionaries](#)
- [WDIS & Sec. Voc. Data Handbooks](#)
- [MISATFOR / WEDDAC](#)
- [Workforce/Vocational Ed. Information](#)
- [2008 Annual Workshop](#)
- [Division of Community Colleges](#)
- [Workforce Ed. Information](#)

DOE Home

- Skip Navigation Printer Friendly
 - [Accountability, Research & Measurement Home](#)
 - [Community College and Technical Center MIS](#)
 - [Data Warehouse](#)
 - [Education Information and Accountability Services](#)
 - [Education and Training Placement Information](#)
 - [National Reporting](#)
 - [School Recognition Program](#)
 - [Statewide](#)
 - [Units and Partners](#)

[DOE Home](#) | [Commissioner](#) | [Board of Education](#) | [Contact Us](#) | [DOE Paperless](#) | [Open Government](#) | [Site Index](#)

For questions & comments regarding education issues: Commissioner@fldoe.org | For questions & comments regarding this Web site: [E-mail Webmaster](#)

[Accessibility](#) | [Copyright Florida Department of Education ©2005](#) | [Privacy Statement](#) | [Public Records](#)

Free Downloads: [Acrobat Reader](#) | [Excel Viewer 2003](#) | [Word Viewer 97/2000](#) | [PowerPoint Viewer 2003](#)

Under Florida law, e-mail addresses are public records. If you do not want your e-mail address released in response to a public-records request, do not send electronic mail to this entity. Instead, contact this office by phone or in writing.