



Trends Related to New Commitments to Prison with a Drug Primary Offense

Office of Economic and Demographic Research, September 20, 2011

New Commitments

Offenders sentenced by the court to

- **Prison**

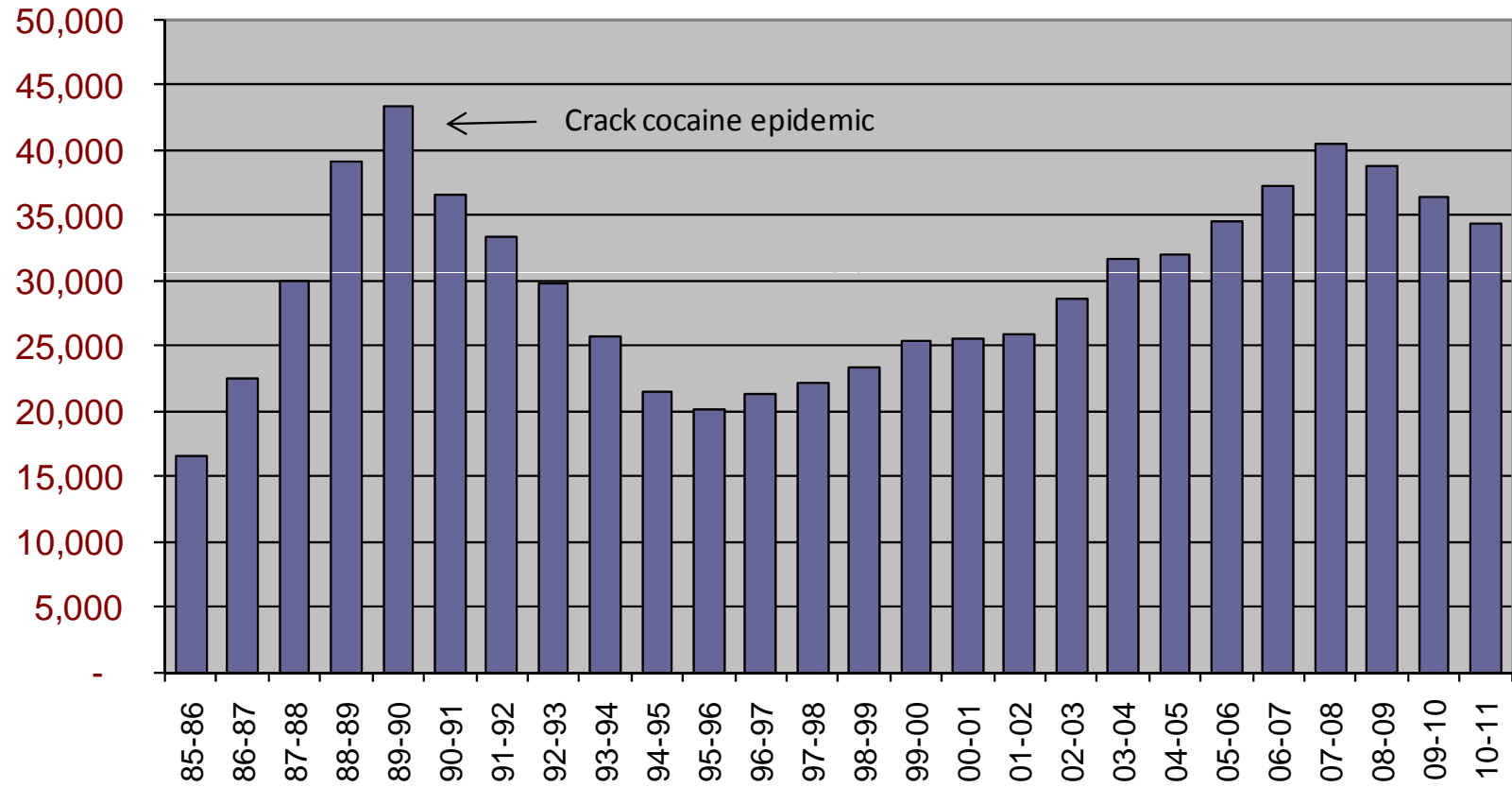
For—

- **Felony offense(s)**

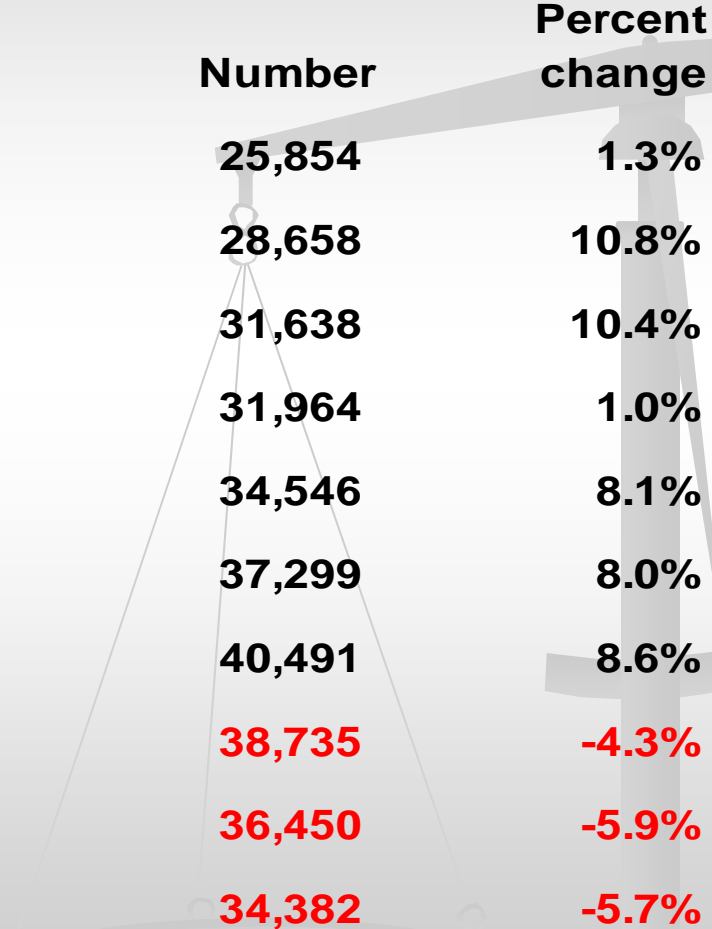
- **366 days or more**

**Prison “admissions” include some offenders
in addition to new commitments**

New Commitments

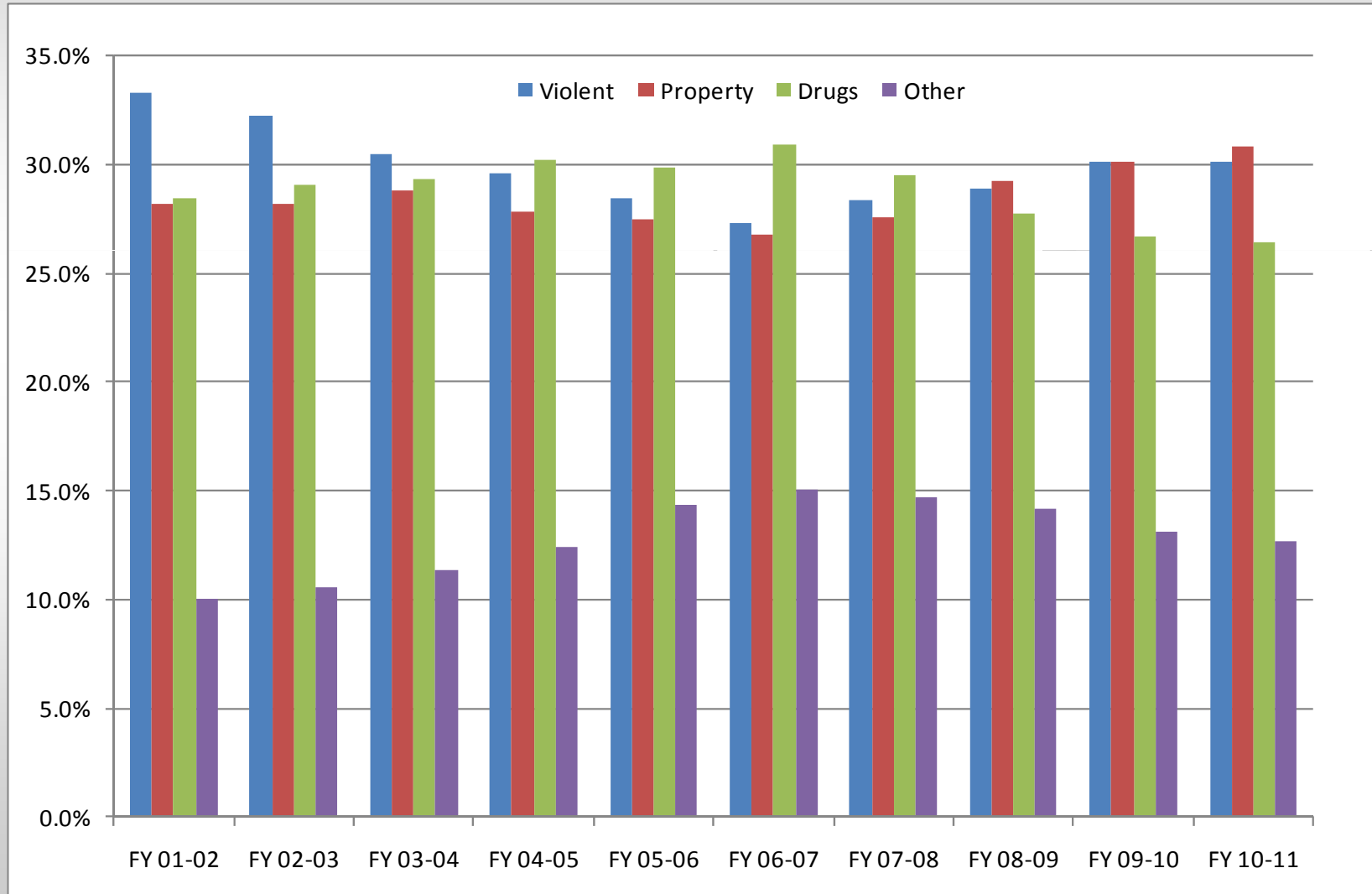


Recent new commitment trends

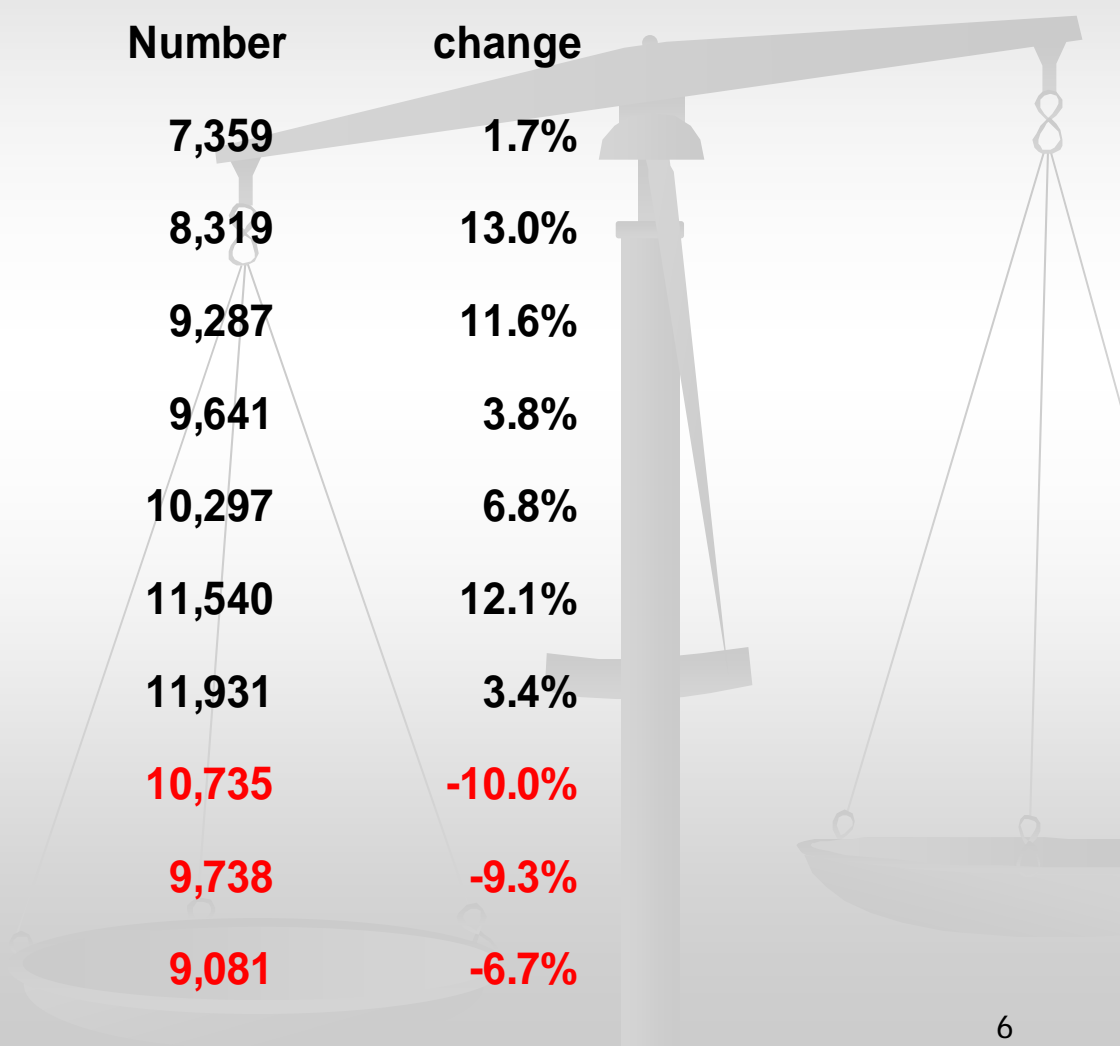


	Number	Percent change
FY 01-02	25,854	1.3%
FY 02-03	28,658	10.8%
FY 03-04	31,638	10.4%
FY 04-05	31,964	1.0%
FY 05-06	34,546	8.1%
FY 06-07	37,299	8.0%
FY 07-08	40,491	8.6%
FY 08-09	38,735	-4.3%
FY 09-10	36,450	-5.9%
FY 10-11	34,382	-5.7%

New Commitments to Prison by Primary Offense Type

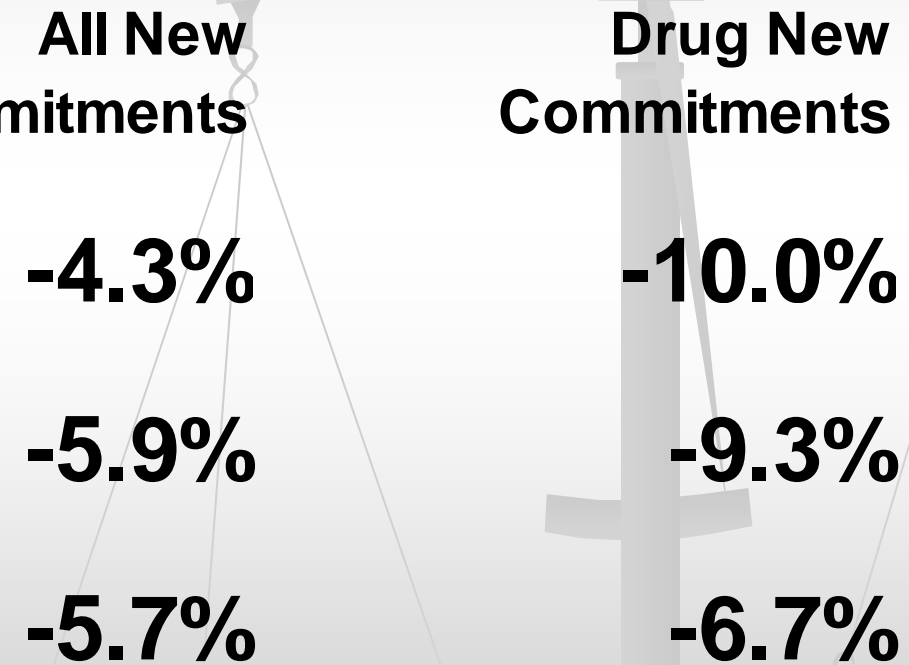


Recent Drug New Commitment Trends



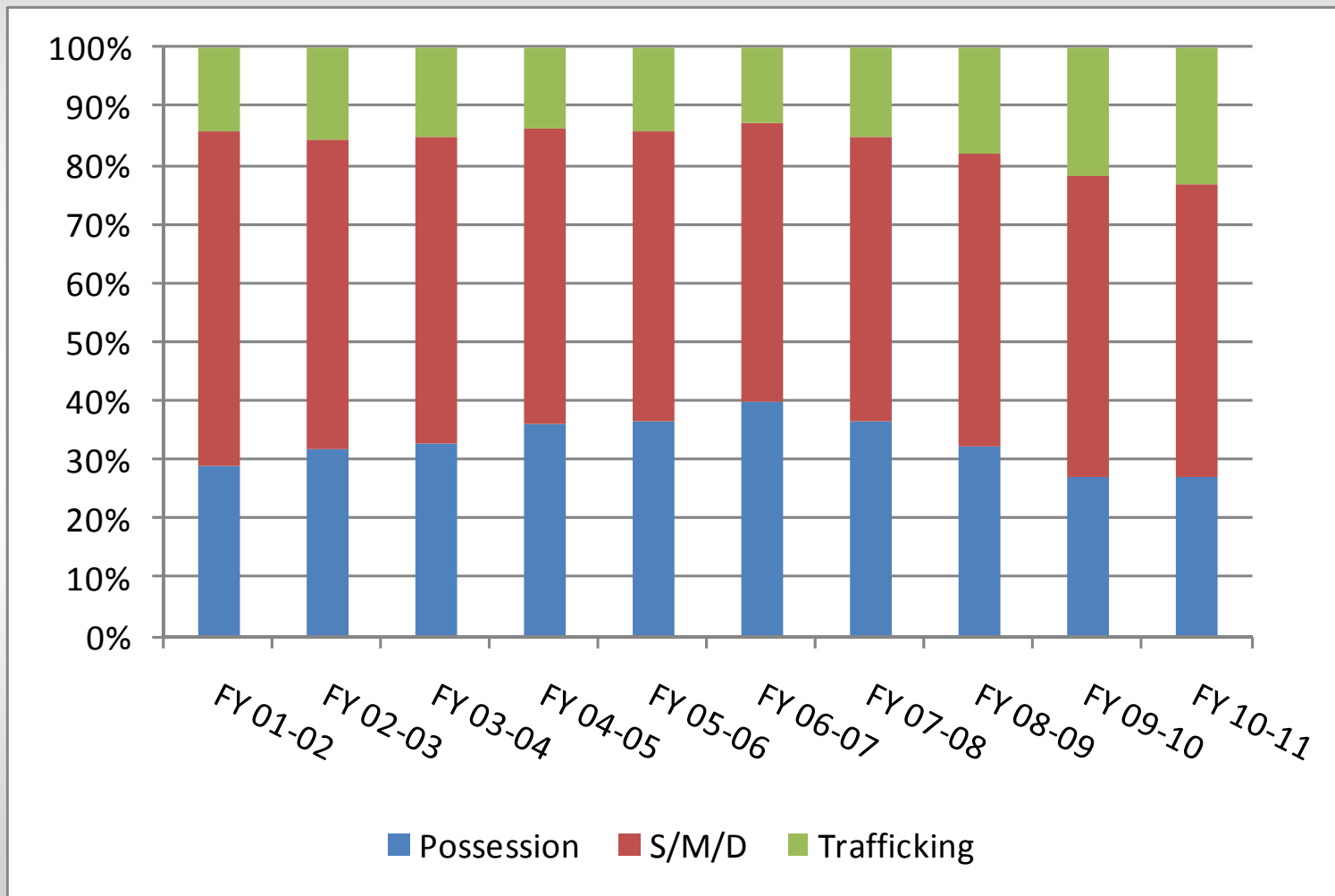
	Number	Percent change
FY 01-02	7,359	1.7%
FY 02-03	8,319	13.0%
FY 03-04	9,287	11.6%
FY 04-05	9,641	3.8%
FY 05-06	10,297	6.8%
FY 06-07	11,540	12.1%
FY 07-08	11,931	3.4%
FY 08-09	10,735	-10.0%
FY 09-10	9,738	-9.3%
FY 10-11	9,081	-6.7%

Three-Year Percent Change New Commitments and Drug New Commitments

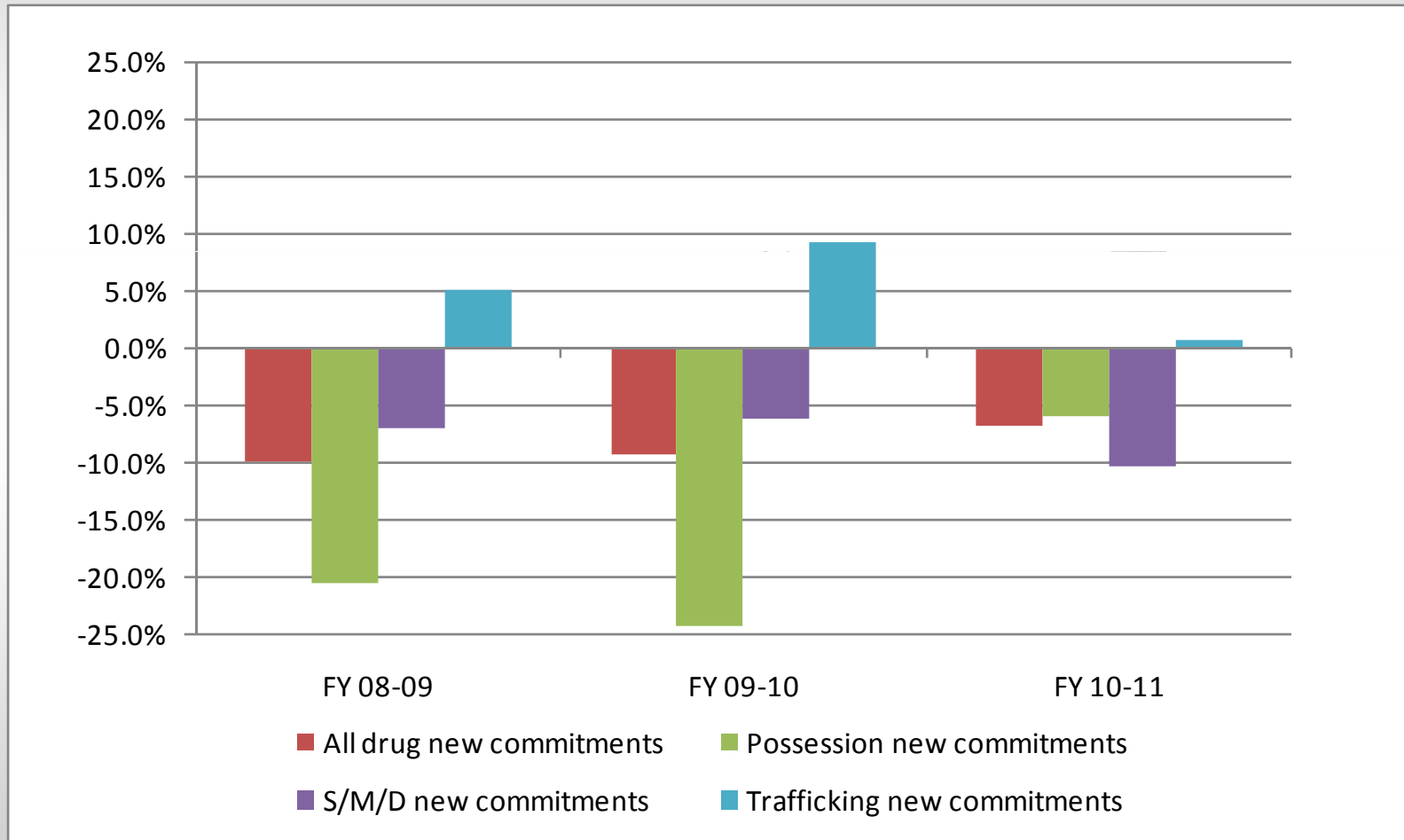


	All New Commitments	Drug New Commitments
FY 08-09	-4.3%	-10.0%
FY 09-10	-5.9%	-9.3%
FY 10-11	-5.7%	-6.7%

Drug Offenses by Type



Change in Drug New Commitments



Possession Offenses

	FY 08-09	FY 09-10	FY 10-11
Cocaine possession	2,433	1,649	1,397
Possession of controlled substance (Other)	459	494	593
Methamphetamine possession	198	144	149
Obtain controlled substance by fraud	121	117	128
Possession of marijuana (over 20 grams)	141	122	93
All other possession offenses	108	91	102
ALL POSSESSION OFFENSES	3,460	2,617	2,462
Change from prior year	-20.5%	-24.3%	-6.0%

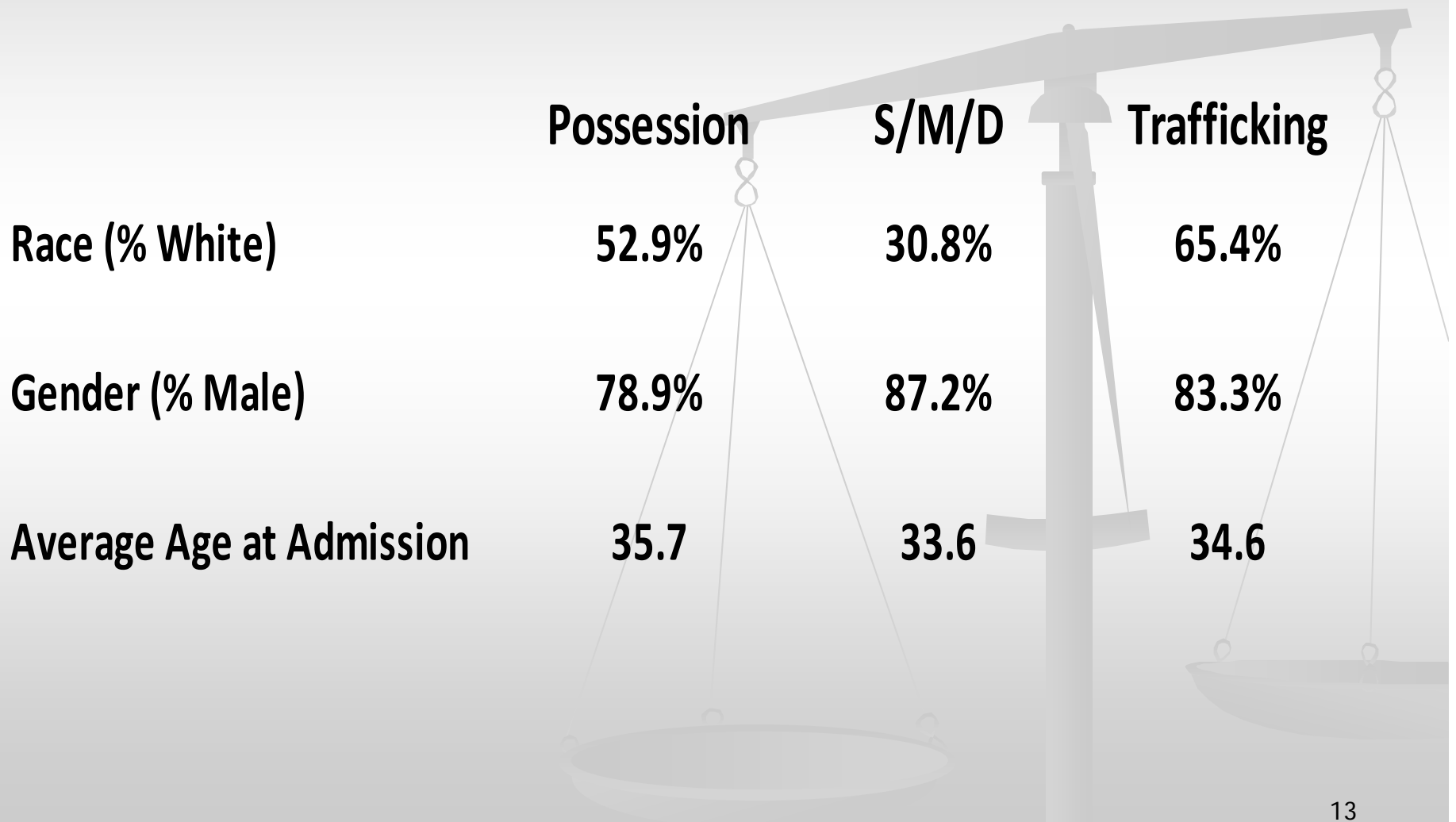
S/M/D Offenses

	FY 08-09	FY 09-10	FY 10-11
Cocaine S/M/D	3,350	2,904	2,355
S/M/D other Schedule I and II	171	336	514
S/M/D marijuana	328	318	322
Sell cocaine/heroin within 1,000 feet of school	338	315	278
S/M/D methamphetamine	122	164	175
All other S/M/D offenses	1,029	969	846
ALL S/M/D OFFENSES	5,338	5,005	4,490
Change from prior year	-7.0%	-6.2%	-10.3%

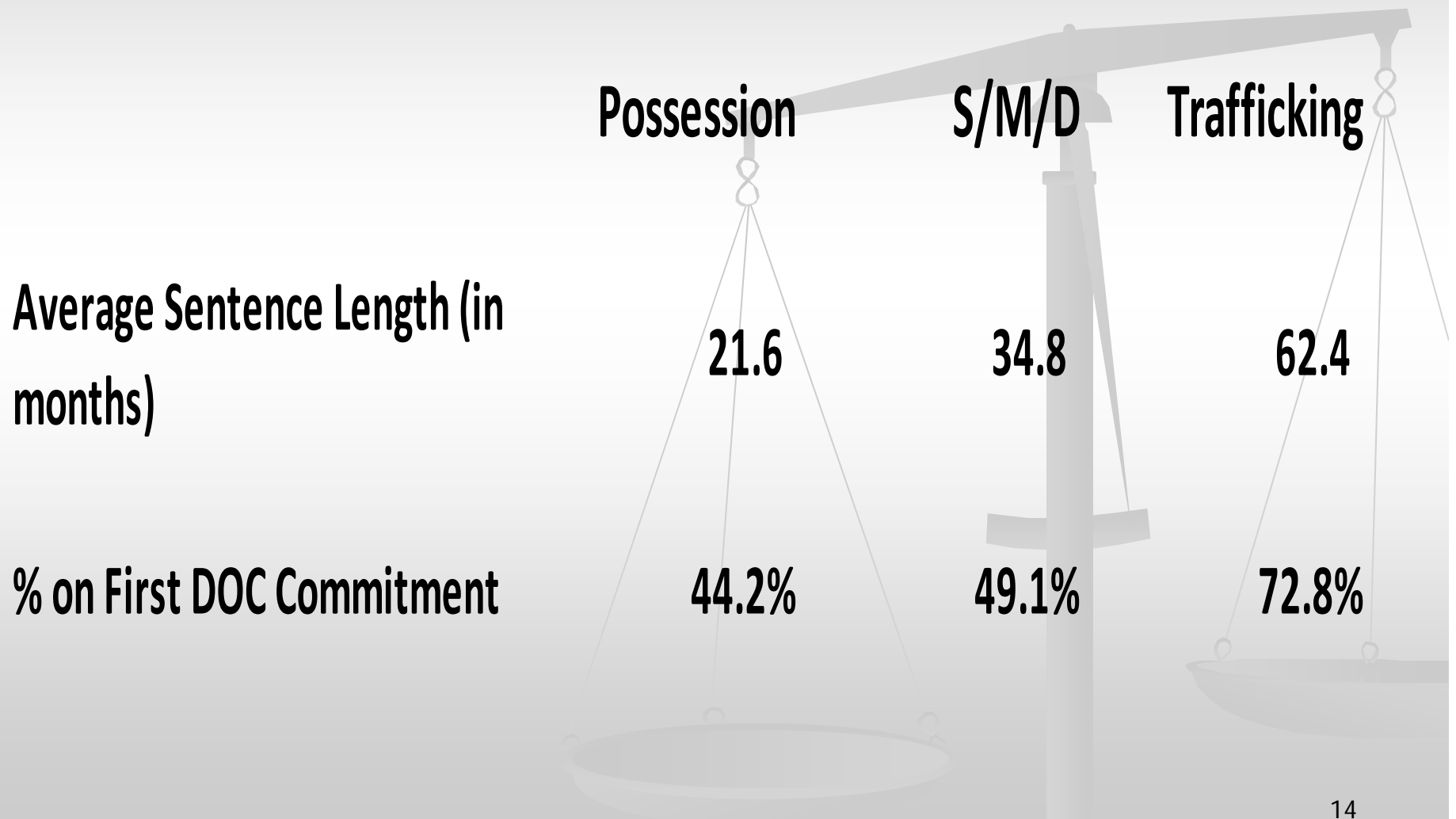
Trafficking Offenses

	FY 08-09	FY 09-10	FY 10-11
Trafficking heroin, oxycodone, hydrocodone, etc. At least 4 grams but less than 14 grams	452	697	845
Trafficking cocaine. At least 28 grams but less than 200 grams	613	485	419
Trafficking heroin, oxycodone, hydrocodone, etc. At least 14 grams but less than 28 grams	117	163	187
Trafficking heroin, oxycodone, hydrocodone, etc. At least 28 grams but less than 30 kilograms	107	138	170
Trafficking marijuana. At least 25 pounds but less than 2000 pounds.	140	144	119
All other trafficking offenses	510	490	388
ALL S/M/D OFFENSES	1,938	2,116	2,130
Change from prior year	-7.0%	9.2%	0.6%

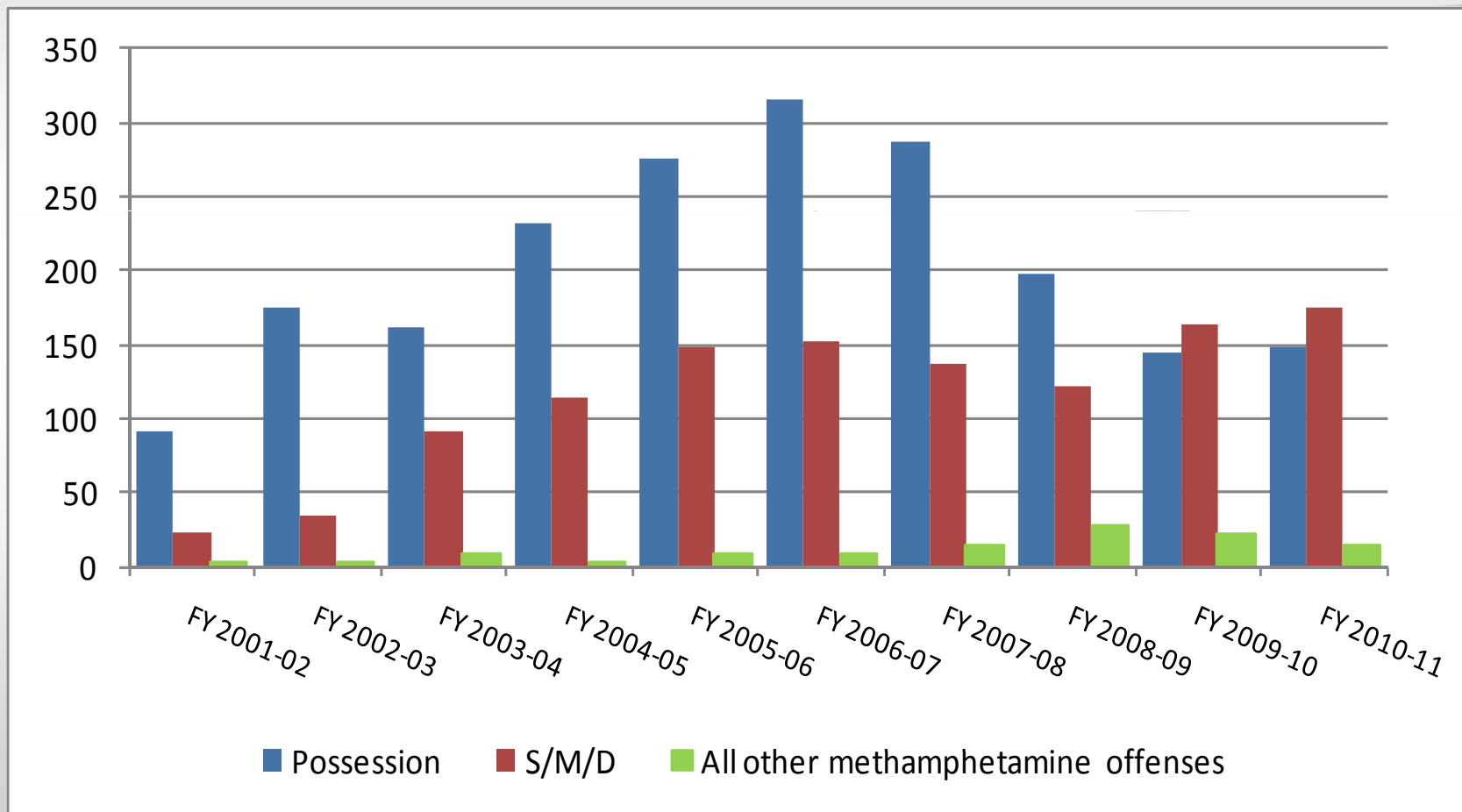
Characteristics of 2010-11 Drug New Commitments



Sentencing Characteristics of 2010-11 Drug New Commitments



Methamphetamine New Commitments



June 30, 2011 Prison Population with a Drug Primary Offense



Possession	2,786
S/M/D	9,215
Trafficking	6,777
All Drug Offenses	18,777
% of All Offenders	18.3%

For additional information

Florida Legislature, Office of Economic and Demographic
Research

edr.state.fl.us