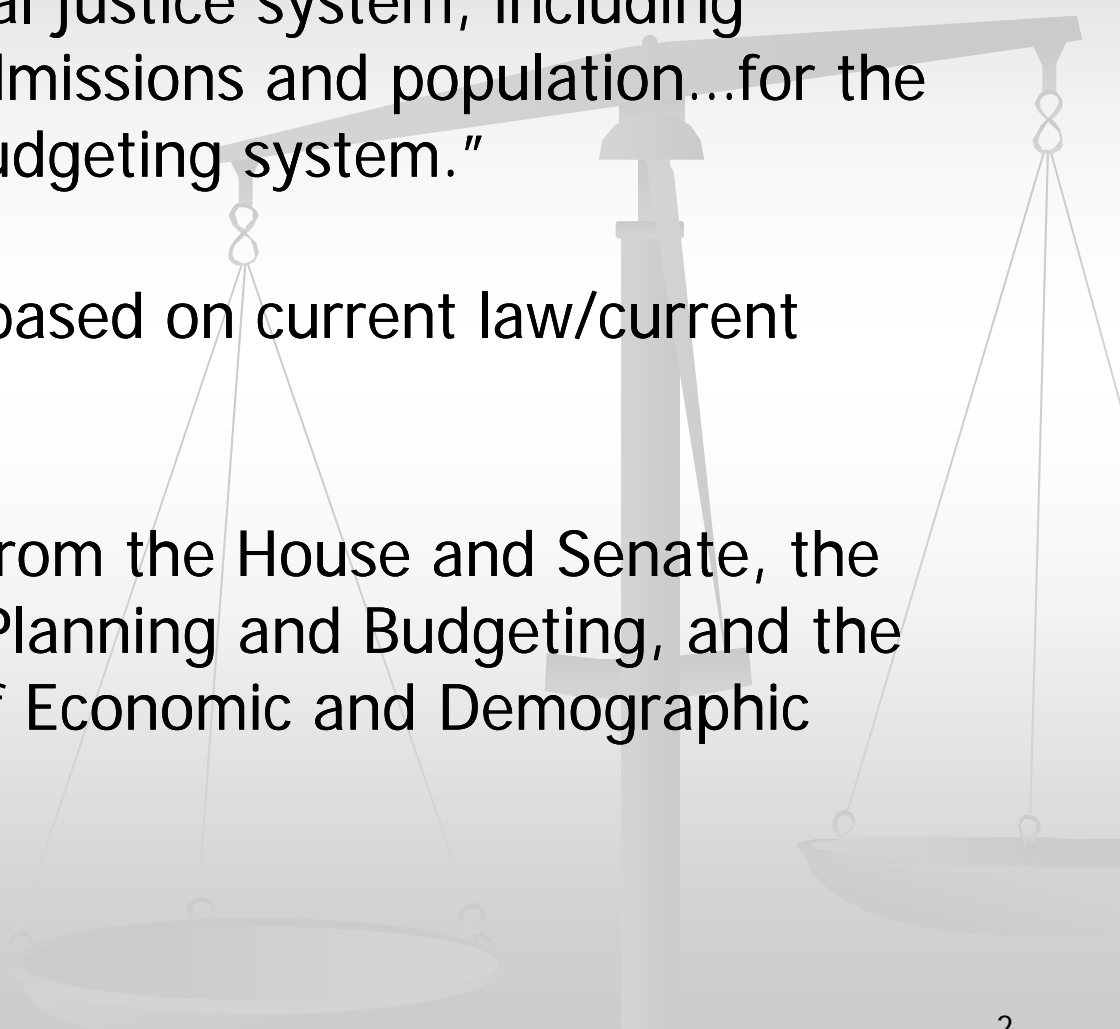




Criminal Justice Estimating Conference Results and Trends

Prepared by the Florida Legislature, Office of Economic and Demographic Research for
the House Judiciary Committee, Criminal Justice Subcommittee, November 1, 2011



Criminal Justice Estimating Conference will typically meet three times a year to “develop official information relating to the criminal justice system, including forecasts of prison admissions and population...for the state planning and budgeting system.”

Projections are usually based on current law/current administration.

Principals include staff from the House and Senate, the Governor’s Office of Planning and Budgeting, and the Legislature’s Office of Economic and Demographic Research.

In addition, the Criminal Justice Impact Conference meets to determine the prison bed impact of proposed legislation.

Proposed legislation which creates new felony offenses or increases the penalty for existing offenses may impact the number of prison beds that are needed.

Alternatively, proposed legislation which creates diversion programs or reduces the penalty for existing offenses may impact the number of prison beds that are needed (fewer beds).

Going into the September CJEC, it was clear that admissions needed to be adjusted downward from the February CJEC.

September's CJEC projected prison
admissions compared to February 2011

CJEC :

- 1,252 for FY 11-12

FY 11-12 admissions now projected to be
32,907—7.6% below FY 10-11

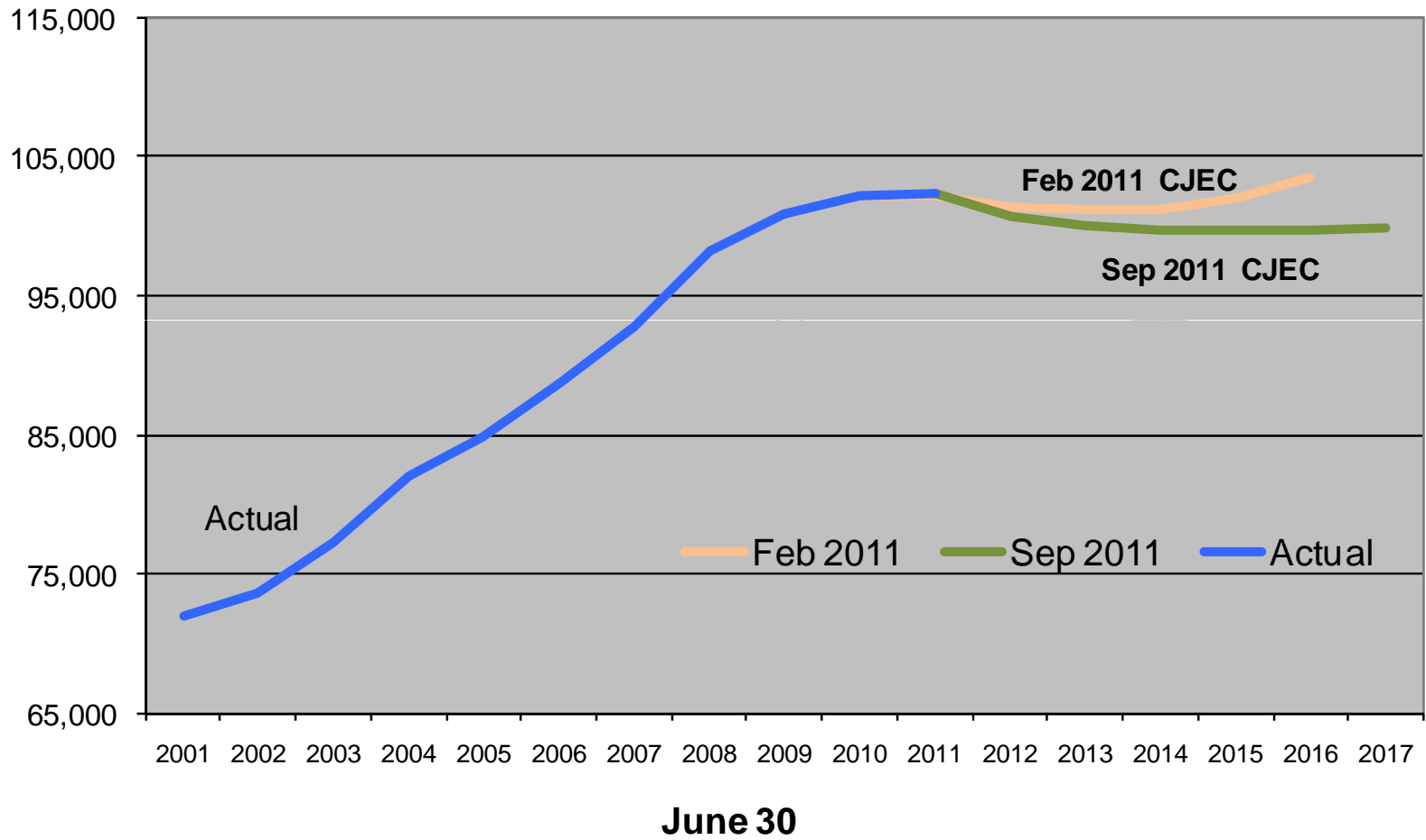
September's CJEC projected prison population compared to February's CJEC:

June 30th prison population:

- **616 for FY 11-12**

June 30, 2012 prison population projection
100,753

Prison Population on June 30: Actual and Projected-- February 2011 and September 2011 CJECs



Why were projections lowered in September?

Review of criminal justice indicators suggest that trends first observed in 2008 are continuing.

These trends will result in smaller numbers of new commitments coming to prison than previously anticipated.

Two-Year Declines

■ Crime Trends

- Index crimes
- Crime rate
- Arrests

■ Judicial System Trends

- Felony filings
- Guilty dispositions

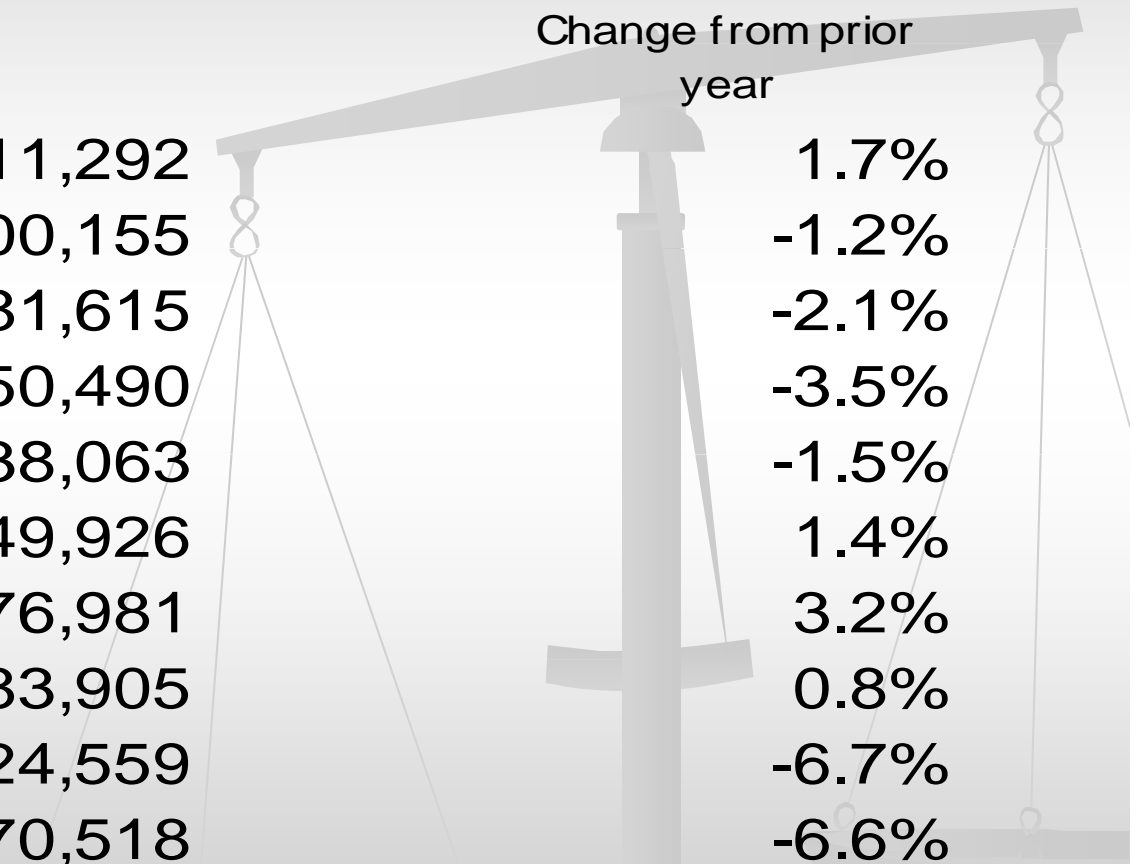
■ New Commitments to Prison

■ Year-and-a Day Sentences



Indicator 1 -- Crime Trends

TOTAL INDEX CRIMES



| | | Change from prior year |
|------|---------|---------------------------|
| 2001 | 911,292 | 1.7% |
| 2002 | 900,155 | -1.2% |
| 2003 | 881,615 | -2.1% |
| 2004 | 850,490 | -3.5% |
| 2005 | 838,063 | -1.5% |
| 2006 | 849,926 | 1.4% |
| 2007 | 876,981 | 3.2% |
| 2008 | 883,905 | 0.8% |
| 2009 | 824,559 | -6.7% |
| 2010 | 770,518 | -6.6% |

Crime Trends by Type of Crime

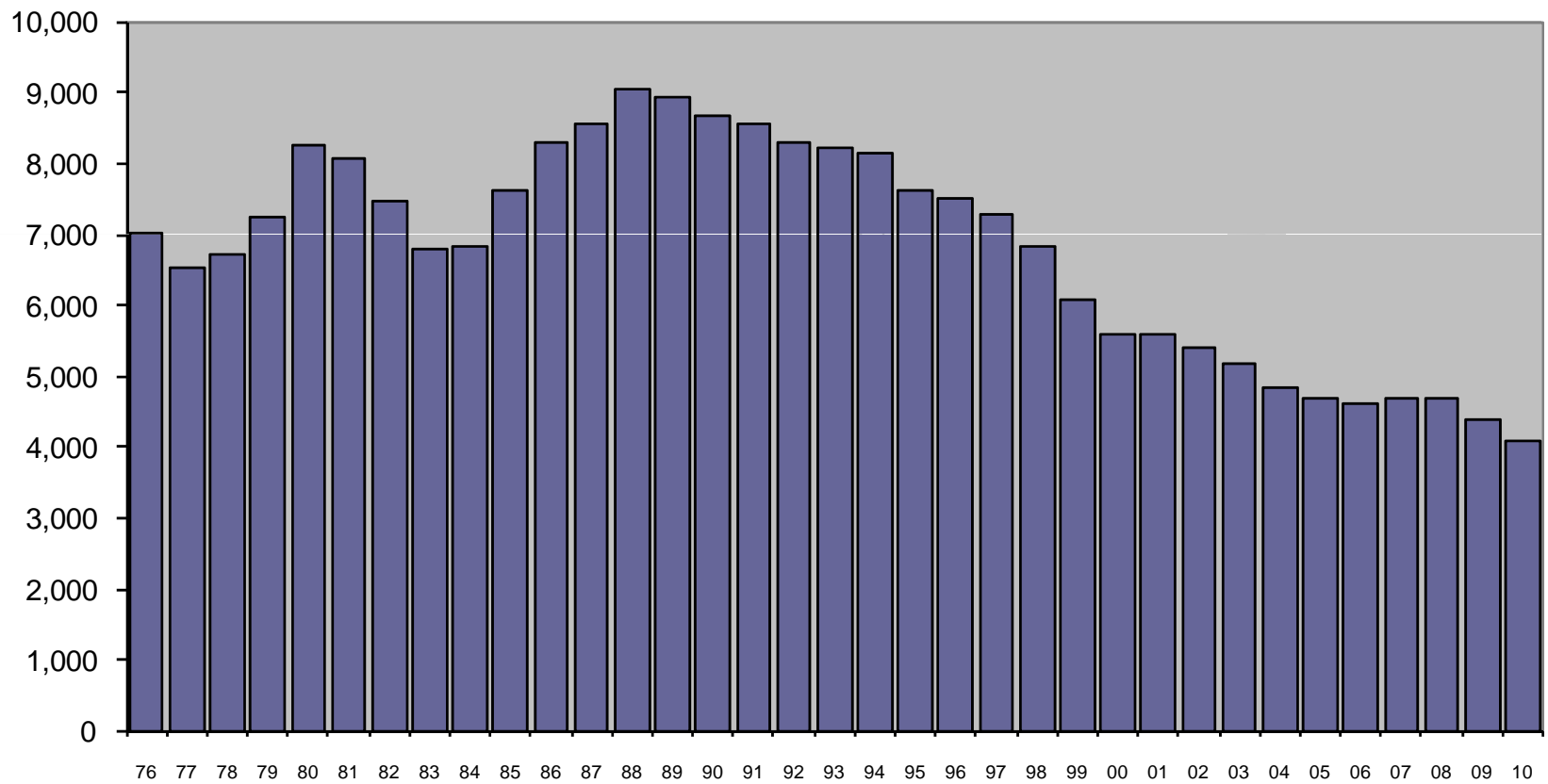
VIOLENT INDEX CRIMES

NON-VIOLENT INDEX CRIMES

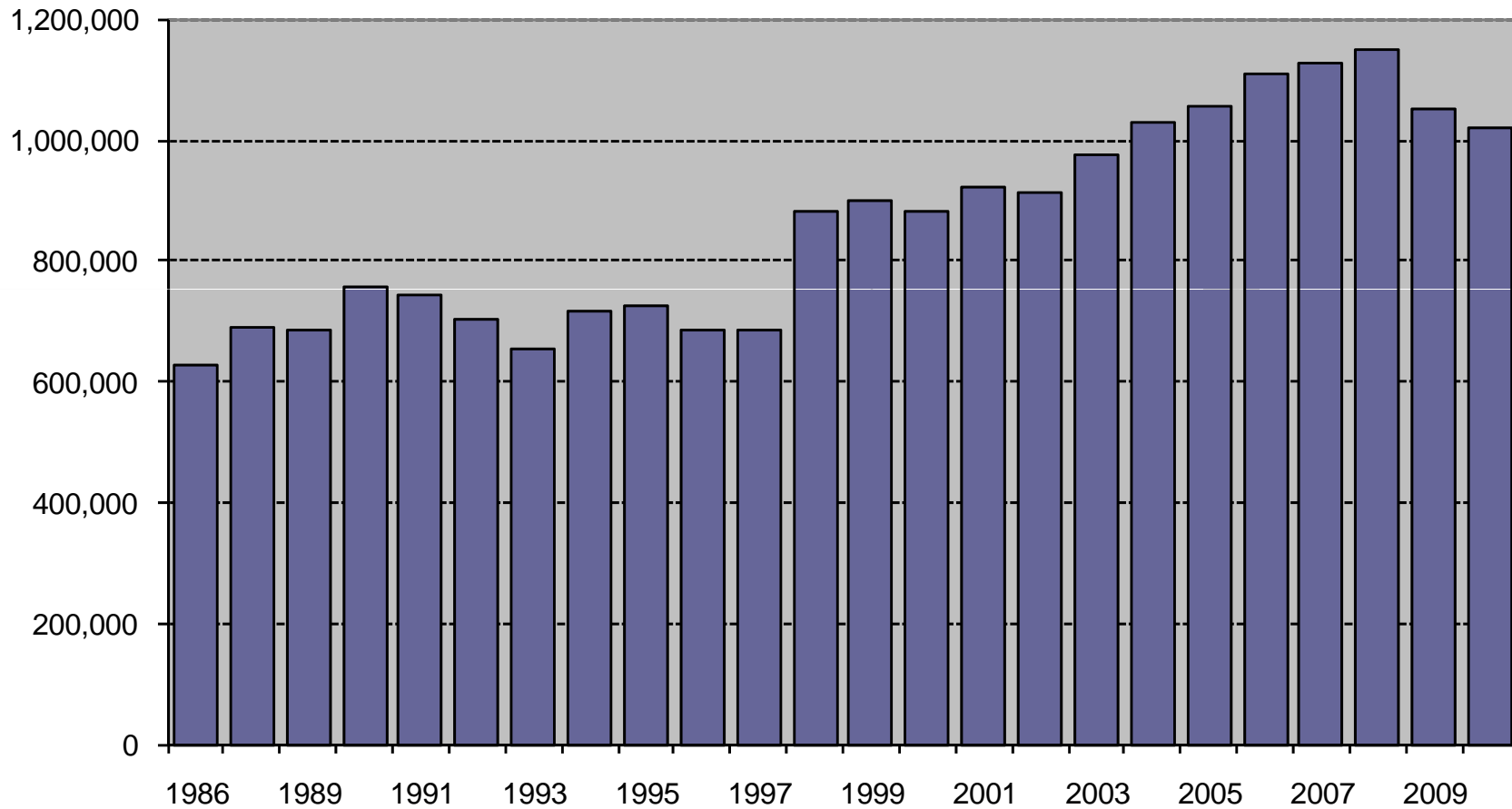
| | | Change from prior year | | Change from prior year |
|------|---------|------------------------|---------|------------------------|
| 2001 | 130,323 | 1.8% | 780,969 | 1.7% |
| 2002 | 127,905 | -1.9% | 772,250 | -1.1% |
| 2003 | 124,236 | -2.9% | 757,379 | -1.9% |
| 2004 | 123,697 | -0.4% | 726,793 | -4.0% |
| 2005 | 125,825 | 1.7% | 712,238 | -2.0% |
| 2006 | 129,501 | 2.9% | 720,425 | 1.1% |
| 2007 | 131,781 | 1.8% | 745,200 | 3.4% |
| 2008 | 126,072 | -4.3% | 757,833 | 1.7% |
| 2009 | 113,415 | -10.0% | 711,144 | -6.2% |
| 2010 | 101,906 | -10.1% | 668,612 | -6.0% |

CRIME RATE

Index Crimes per 100,000 Population



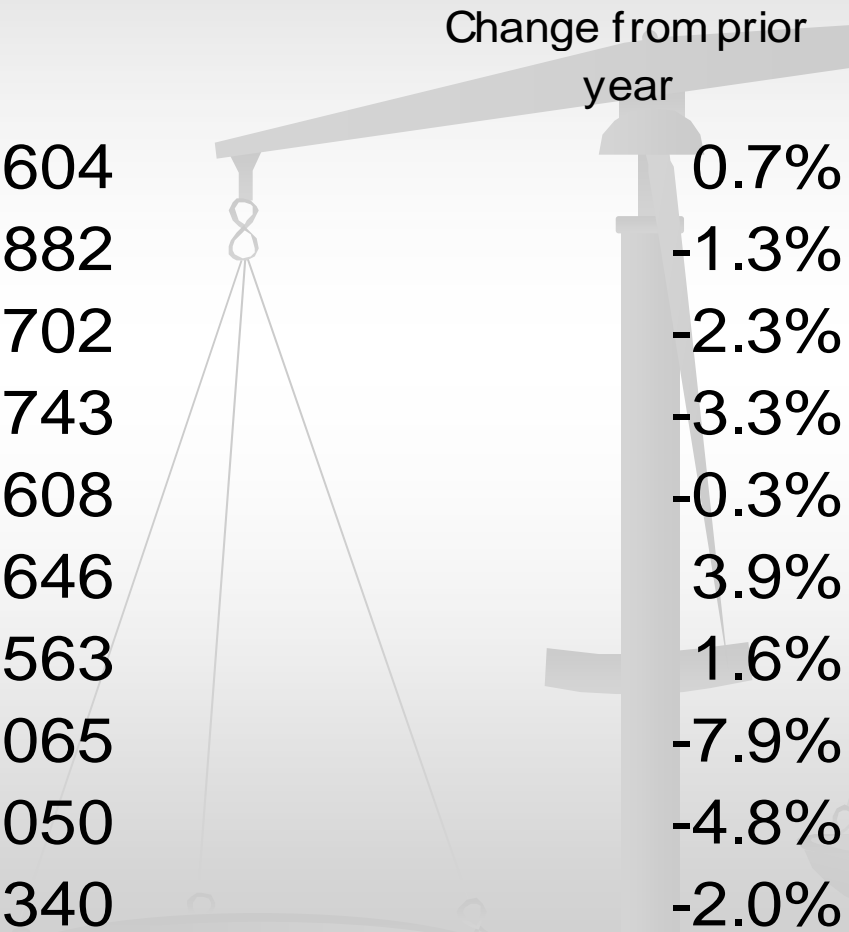
TOTAL ARRESTS



Source of data changed in 1996 to fingerprint cards and in 1998 to aggregate reports from Law Enforcement Agencies. Arrest data are not available for 1988.

Additional Crime Data Just Released

Reported Index Crimes from the Six-Month Uniform Crime Report – January through June



| | | Change from prior year |
|------|---------|---------------------------|
| 2002 | 442,604 | 0.7% |
| 2003 | 436,882 | -1.3% |
| 2004 | 426,702 | -2.3% |
| 2005 | 412,743 | -3.3% |
| 2006 | 411,608 | -0.3% |
| 2007 | 427,646 | 3.9% |
| 2008 | 434,563 | 1.6% |
| 2009 | 400,065 | -7.9% |
| 2010 | 381,050 | -4.8% |
| 2011 | 373,340 | -2.0% |

Crime Trends by Type of Crime

Six Month Uniform Crime Report: January - June

VIOLENT INDEX CRIMES

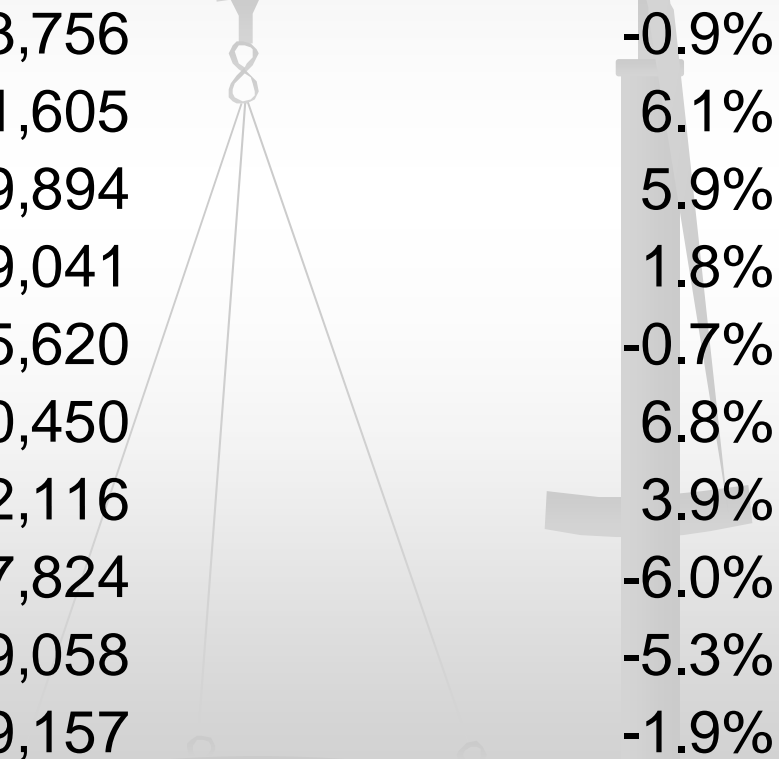
| | | Change from prior year |
|------|--------|---------------------------|
| 2002 | 62,770 | -1.6% |
| 2003 | 61,699 | -1.7% |
| 2004 | 61,345 | -0.6% |
| 2005 | 61,737 | 0.6% |
| 2006 | 63,712 | 3.2% |
| 2007 | 65,011 | 2.0% |
| 2008 | 63,421 | -2.4% |
| 2009 | 57,253 | -9.7% |
| 2010 | 51,113 | -10.7% |
| 2011 | 49,489 | -3.2% |

NON-VIOLENT INDEX CRIMES

| | Change from prior year |
|---------|---------------------------|
| 379,834 | 1.1% |
| 375,183 | -1.2% |
| 365,357 | -2.6% |
| 351,006 | -3.9% |
| 347,896 | -0.9% |
| 362,635 | 4.2% |
| 371,142 | 2.3% |
| 342,814 | -7.6% |
| 329,937 | -3.8% |
| 323,851 | -1.8% |

Arrests


Six Month Uniform Crime Report: January - June



| | | Change from prior year |
|------|---------|---------------------------|
| 2002 | 453,756 | -0.9% |
| 2003 | 481,605 | 6.1% |
| 2004 | 509,894 | 5.9% |
| 2005 | 519,041 | 1.8% |
| 2006 | 515,620 | -0.7% |
| 2007 | 550,450 | 6.8% |
| 2008 | 572,116 | 3.9% |
| 2009 | 537,824 | -6.0% |
| 2010 | 509,058 | -5.3% |
| 2011 | 499,157 | -1.9% |

Indicator 2

Judicial System Trends



RECENT TRENDS IN FELONY FILINGS AND GUILTY DISPOSITIONS

| Felony Filings | |
|----------------|----------------|
| Number | Percent Change |

| Guilty Dispositions | |
|---------------------|----------------|
| Number | Percent Change |

| | | | | | |
|------|---------|-------|--|---------|--------|
| 2001 | 184,571 | -0.8% | | 142,907 | 2.9% |
| 2002 | 184,295 | -0.1% | | 143,253 | 0.2% |
| 2003 | 187,379 | 1.7% | | 147,707 | 3.1% |
| 2004 | 194,863 | 4.0% | | 151,544 | 2.6% |
| 2005 | 208,540 | 7.0% | | 159,008 | 4.9% |
| 2006 | 220,757 | 5.9% | | 171,087 | 7.6% |
| 2007 | 230,822 | 4.6% | | 183,993 | 7.5% |
| 2008 | 224,420 | -2.8% | | 185,950 | 1.1% |
| 2009 | 204,479 | -8.9% | | 159,764 | -14.1% |
| 2010 | 197,826 | -3.3% | | 146,384 | -8.4% |

| | | | | | |
|---------------------------|--------|--|--|--------|--|
| Jan-Jun 2010 ¹ | 98,124 | | | 75,677 | |
|---------------------------|--------|--|--|--------|--|

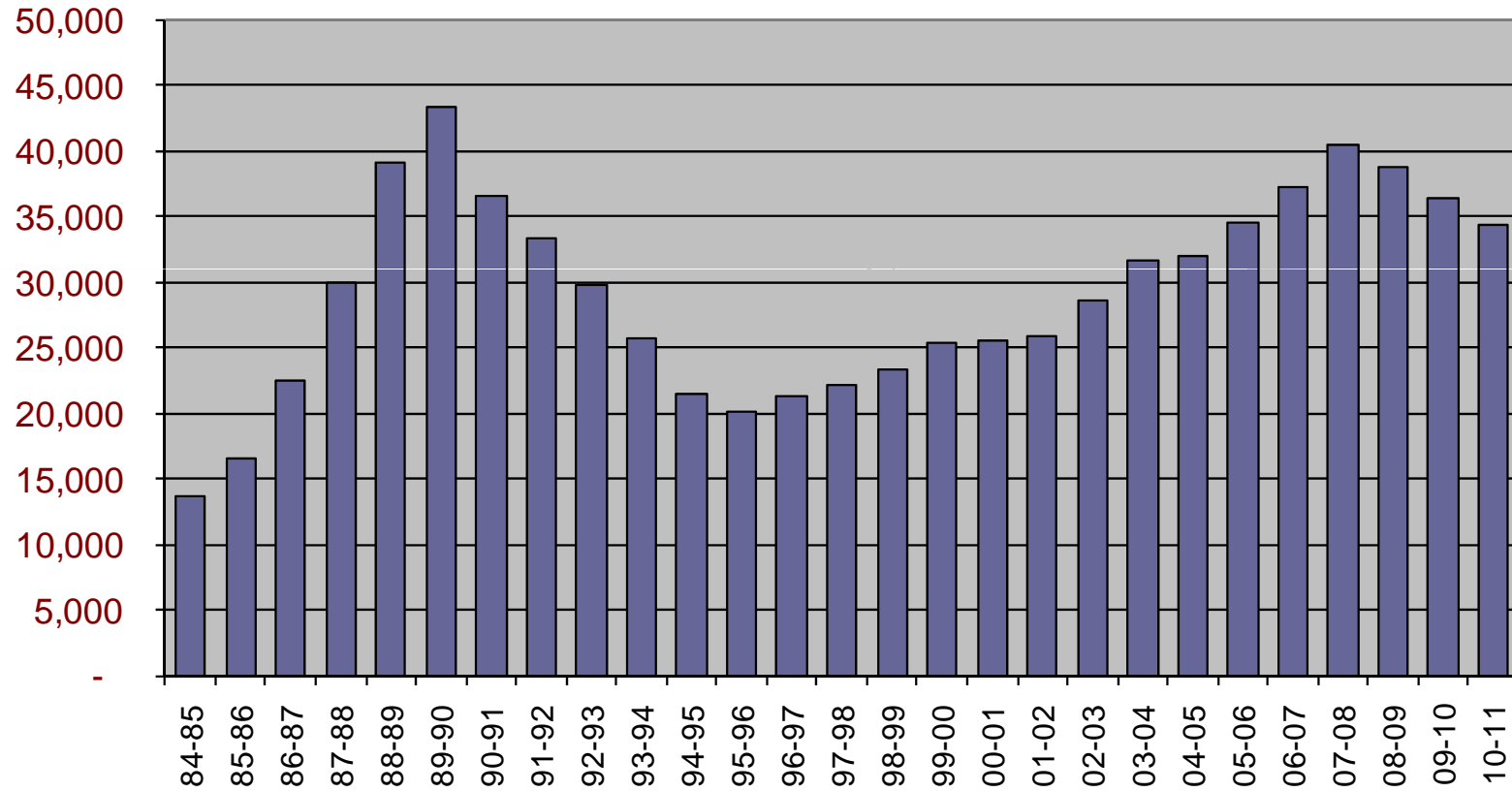
| | | | | | |
|---------------------------|--------|------|--|--------|-------|
| Jan-Jun 2011 ² | 98,833 | 0.7% | | 73,335 | -3.1% |
|---------------------------|--------|------|--|--------|-------|



Indicator 3

New Commitments

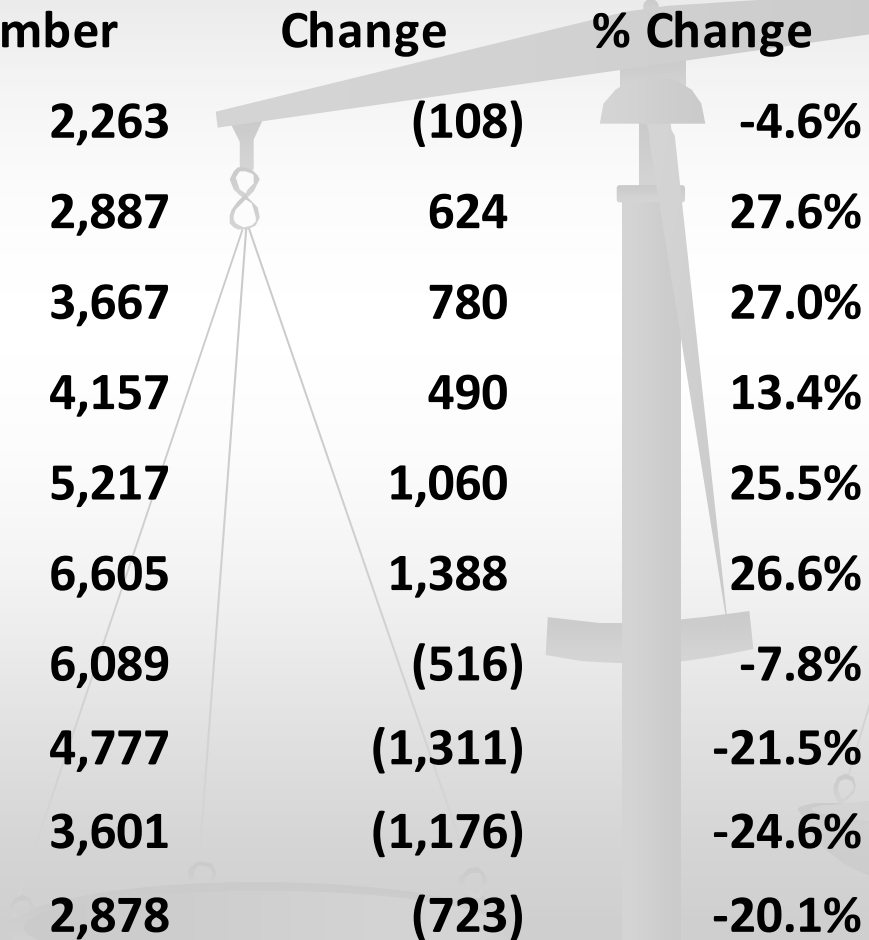
New Commitments



Indicator 4 – Year- and-a-Day Sentences

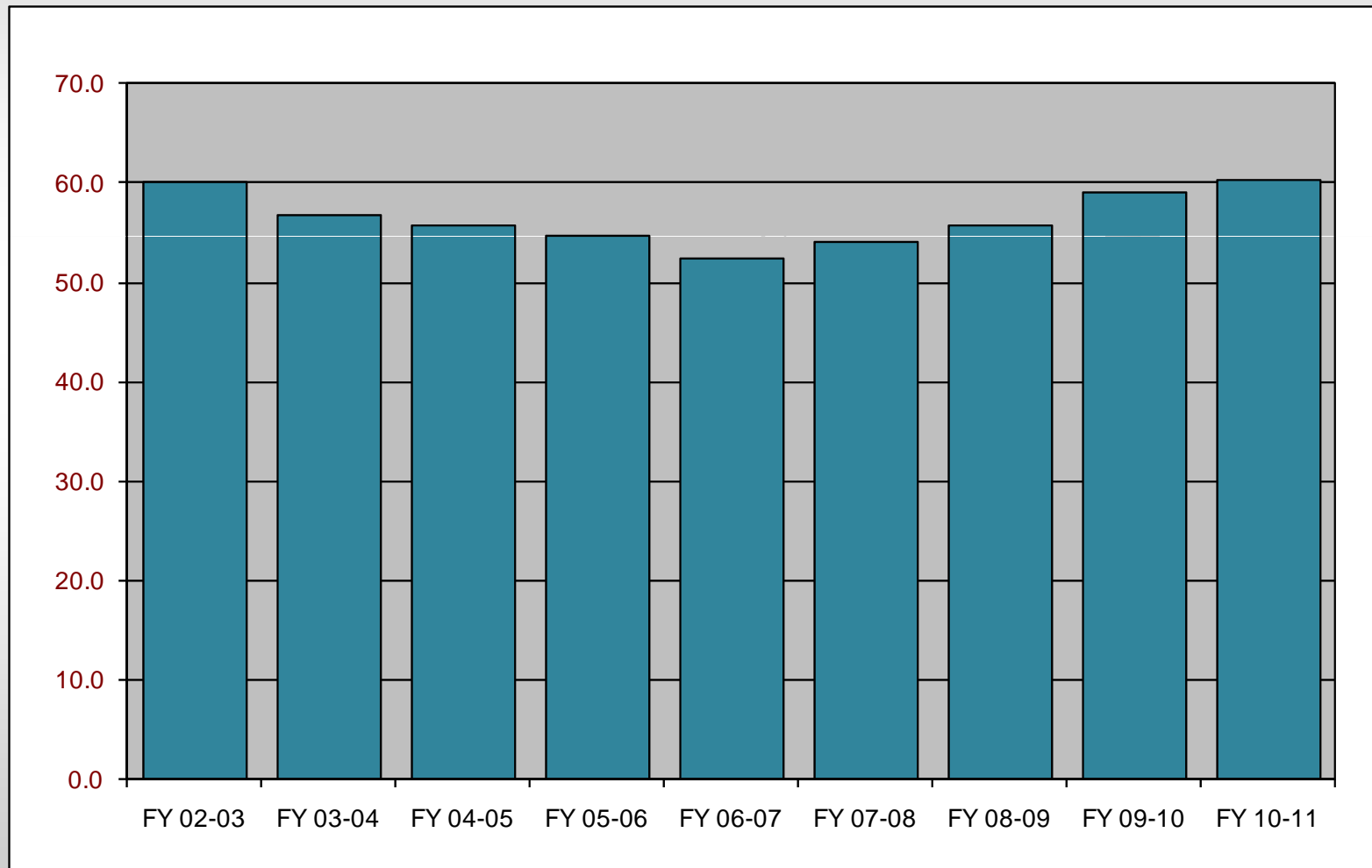


Year-and-a-day New Commitments to Prison



| | Number | Change | % Change |
|----------|--------|---------|----------|
| FY 01-02 | 2,263 | (108) | -4.6% |
| FY 02-03 | 2,887 | 624 | 27.6% |
| FY 03-04 | 3,667 | 780 | 27.0% |
| FY 04-05 | 4,157 | 490 | 13.4% |
| FY 05-06 | 5,217 | 1,060 | 25.5% |
| FY 06-07 | 6,605 | 1,388 | 26.6% |
| FY 07-08 | 6,089 | (516) | -7.8% |
| FY 08-09 | 4,777 | (1,311) | -21.5% |
| FY 09-10 | 3,601 | (1,176) | -24.6% |
| FY 10-11 | 2,878 | (723) | -20.1% |

Sentence Length of New Commitments





Additional New Commitment Trends

Highest Volume Primary Offenses of New Commitments to Prison

| Rank | Primary Offense | FY 2010-11 New commitments | % of new commitments | Rank in FY 2009-10 |
|------|--|----------------------------------|-------------------------|-----------------------|
| 1 | Burglary of an Occupied Dwelling or Conveyance | 2,919 | 8.5% | 2 |
| 2 | Cocaine--Sale/Manufacture/Deliver | 2,356 | 6.8% | 1 |
| 3 | Burglary of an Unoccupied Structure | 1,821 | 5.3% | 3 |
| 4 | Traffic in Stolen Property | 1,504 | 4.4% | 5 |
| 5 | Cocaine Possession | 1,398 | 4.1% | 4 |
| 6 | Felon Possessing Firearm | 1,194 | 3.5% | 8 |
| 7 | Robbery with Firearm or Deadly Weapon | 1,132 | 3.3% | 6 |
| 8 | Grand Theft--At least \$300 but less than \$5,000 | 1,109 | 3.2% | 7 |
| 9 | Robbery -- No Firearm or Other Weapon | 914 | 2.7% | 9 |
| 10 | Trafficking Heroin, Oxycodone, Hydrocodone, etc. At least 4 grams but less than 14 grams | 845 | 2.5% | 11 |

Technical Violators Sentenced to Prison



| | | % Change |
|--|--------|----------|
| <i>Technical violators to prison FY 2002-03:</i> | 7,898 | |
| <i>Technical violators to prison FY 2003-04:</i> | 9,478 | 20.0% |
| <i>Technical violators to prison FY 2004-05:</i> | 10,148 | 7.1% |
| <i>Technical violators to prison FY 2005-06:</i> | 10,576 | 4.2% |
| <i>Technical violators to prison FY 2006-07:</i> | 11,207 | 6.0% |
| <i>Technical violators to prison FY 2007-08:</i> | 10,145 | -9.5% |
| <i>Technical violators to prison FY 2008-09:</i> | 8,199 | -19.2% |
| <i>Technical violators to prison FY 2009-10:</i> | 7,506 | -8.5% |
| <i>Technical violators to prison FY 2010-11:</i> | 7,138 | -4.9% |

For Additional Information

Florida Legislature, Office of Economic and Demographic
Research

edr.state.fl.us