



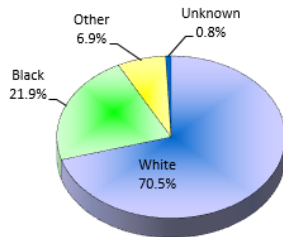
Florida Vital Statistics

Florida Births

There were 209,645 resident live births in Florida in 2020, 4.7 percent below 2019's level of 220,010. In 2007, there was a record 239,120 resident live births in the state.

Most of the resident births in Florida were to white mothers (Figure 1).

Figure 1 - Florida Resident Births by Mother's Race 2020



Teen Births

Teen births (to mothers aged 15-19) accounted for 4.3 percent of all births in 2020. These births represented 3.8 percent of births to white mothers and 5.3 percent to nonwhite mothers. Birth rates were higher for nonwhites than whites (9.3 vs 6.6), even though the number of births to teens was more for whites than nonwhites (5,647 vs 3,271).

Teen birth rates are higher for older teens (ages 18-19) than for younger teens (ages 15-17). Prior to 2020, both rates had been trending downward over time, as shown in Figure 2. In 2020 there were 2.8 births per 1,000 girls aged 15-17 and 14.5 births per 1,000 girls aged 18-19. Since 1989, birth rates hit a high of 22.2 for girls aged 15-17 in 1989 and 49.6 for girls aged 18-19 in 1990.

Table 1 - Florida Live Birth Rates* by Mother's Race 2020

Florida		
Total	White	Nonwhite
9.7	8.8	12.2

Florida's birth rate had been hovering between 11.1 and 11.4 since 2010, falling more recently to 10.6 in 2018, 10.3 in 2019, and 9.7 in 2020. Birth rates continue to be higher for nonwhites than whites, 12.2 versus 8.8 (Table 1). In 2020, the birth rate for Hispanics (regardless of race) was 11.3, while Non-Hispanics was 8.9. Hispanic births represent 31.1 percent of all births in the state.

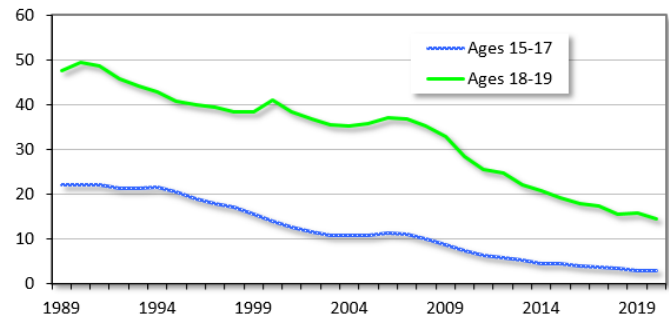
Table 2 shows the number of live births by age and race of the mother. Overall, 45.9 percent of all births are to women aged 20-29, while 75.5 percent are to women aged 20-34. The highest number of births are to women aged 30-34, representing 29.6 percent of total births.

Table 2 - Florida Resident Births by Age and Race of Mother 2020

Mother's Age	Mother's Race				Total
	White	Black	Other NonWhite	Unknown	
<15	49	28	9	2	88
15-17	1,270	673	112	18	2,073
18-19	4,377	2,063	368	37	6,845
20-24	25,135	10,345	1,952	242	37,674
25-29	41,371	13,165	3,669	384	58,589
30-34	45,463	11,361	4,760	501	62,085
35-39	24,406	6,435	2,877	323	34,041
40-44	5,223	1,725	627	75	7,650
45+	416	121	49	5	591
Unknown	5	1	1	2	9
Total	147,715	45,917	14,424	1,589	209,645

Note: Totals may differ from those in text due to missing data on age and/or race.
*Rate per 1,000 women.

Figure 2 - Florida Teen Birth Rate* by Age



Unwed Mothers

In general, the percent of live births to unwed Florida mothers had been steadily increasing, representing 15.0 percent of all births in 1970, 22.9 percent in 1980, 31.7 percent in 1990, 38.2 percent in 2000, and 47.5 percent in 2010. This percentage appears to have peaked in 2012 and 2013 at 48.0 percent, before it fell to 47.2 percent by 2020. For white mothers, 42.2 percent of live births was to an unwed woman, while for nonwhite mothers this percentage was 59.5 percent.

Florida Deaths

There were 239,381 resident deaths in Florida in 2020, an increase of 15.7 percent from 206,975 in 2019. As shown in Table 3, male death rates typically equal or exceed female death rates by age group. Also, for most age groups, nonwhite death rates equal or exceed the death rates for whites. The exceptions are the 25-34 and 85+ age groups for females.

The two major causes of deaths in Florida in 2020 were heart diseases and cancer (Figure 3), representing 39.7 percent of all deaths in the state. The number of deaths due to these two major causes typically increases as the population ages. However, the percentage of deaths due to heart diseases and cancer relative to the total number of deaths by age group is greatest for the 65-74 year old group (47.3%). In addition, the third largest cause of death during the year was COVID-19, representing 8.0 percent of all deaths in the state. During this first year of the pandemic, COVID-19 deaths totaled 19,157.

For residents between age 1 and 44, unintentional injury (accidents) was the primary cause of death, representing 43.3% of the deaths in this age group.

Figure 3 - Florida Resident Deaths by Major Cause 2020

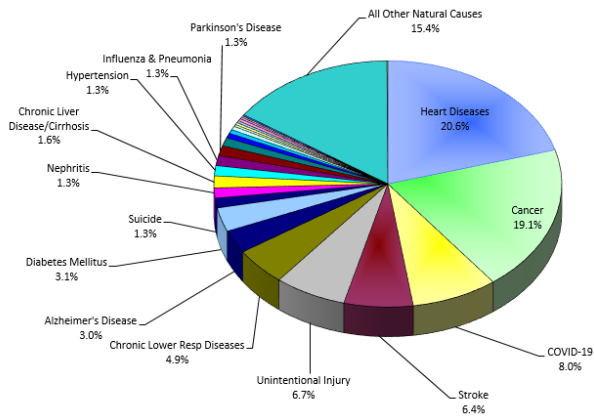


Table 3 - Florida Resident Deaths by Age and Race 2020

Age	White Males		White Females		Nonwhite Males		Nonwhite Females		Total*	
	Number	Death Rate**	Number	Death Rate**	Number	Death Rate**	Number	Death Rate**	Number	Death Rate**
<1	330	4.42	297	4.18	335	11.02	244	8.40	1,213	5.91
1-4	81	0.24	51	0.16	55	0.38	53	0.37	241	0.26
5-9	51	0.12	33	0.08	36	0.19	27	0.15	147	0.13
10-14	84	0.19	44	0.11	46	0.25	28	0.15	202	0.17
15-19	301	0.68	129	0.31	197	1.10	84	0.48	711	0.59
20-24	704	1.52	236	0.54	386	2.10	118	0.65	1,445	1.14
25-34	2,421	2.30	1,087	1.09	938	2.45	406	1.05	4,855	1.72
35-44	3,361	3.39	1,772	1.82	1,108	3.56	738	2.14	6,988	2.66
45-54	5,846	5.51	3,361	3.12	1,816	6.54	1,223	3.88	12,264	4.49
55-64	14,603	12.81	8,686	6.99	3,547	14.52	2,585	8.87	29,479	10.10
65-74	22,801	23.10	15,399	13.54	4,440	28.85	3,471	17.56	46,189	18.66
75-84	29,117	49.12	24,199	34.44	3,857	57.42	3,653	39.36	60,867	41.82
85+	28,576	132.36	39,207	125.38	2,606	138.26	4,361	120.76	74,777	128.14
Unknown	2		0		0		0		3	
Total	108,278	13.19	94,501	11.11	19,367	8.17	16,991	6.65	239,381	11.06

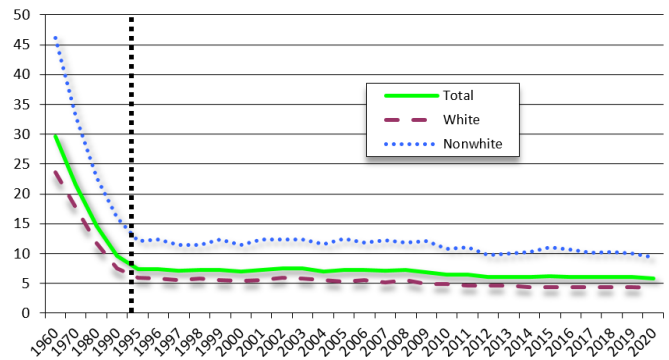
*Totals may not add due to unknown. **Death Rate per 1,000 population.

Data in this report are from the Florida Vital Statistics Annual Report 2020, Florida Department of Health, <http://www.flpublichealth.com/VSBOOK/pdf/2020/vscomp.pdf>; Florida Department of Health, CHARTS system.

Florida Infant Mortality

In 2020, 1,213 babies died prior to their first birthday. The infant death rate was 5.8 deaths per 1,000 live births. Figure 4 displays decade data (1960 through 1990) and annual data (1995 through 2020). Through the mid-1990s, infant mortality rates trended downward for both whites and nonwhites. White rates were 7.5 in 1990 and 4.2 in 2020, while nonwhite rates were 16.0 in 1990 and 9.3 in 2020. The Infant mortality rate for nonwhites is more than double the rate for whites. As shown in Figure 4, nonwhite infant mortality rates have consistently exceeded the rates for whites.

Figure 4 - Florida Infant Mortality Rate (per 1,000 Live Births)



Florida Natural Increase

Natural increase is defined as the difference between births and deaths. Since 1989 and prior to 2020, Florida's natural increase remained positive (number of annual births were greater than the number of annual deaths in Florida). In 2020, Florida's natural increase turned negative as deaths surpassed births by 29,736.

Figure 5 - Florida Natural Increase

