



Florida Vital Statistics

Florida Births

There were 220,010 resident live births in Florida in 2019, 0.7 percent below 2018's level of 221,508. In 2007, there was a record 239,120 resident live births in the state.

Most of the resident births in Florida were to white mothers (Figure 1).

Figure 1 - Florida Resident Births by Mother's Race 2019

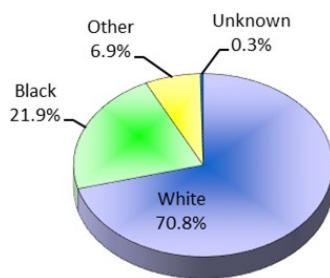


Table 1 - Florida Live Birth Rates* by Mother's Race 2019

Florida		
Total	White	Nonwhite
10.3	9.5	13.1

Florida's birth rate had been hovering between 11.1 and 11.4 since 2010, falling more recently to 10.9 in 2017, 10.6 in 2018, and 10.3 in 2019. Birth rates continue to be higher for nonwhites than whites, 13.1 versus 9.5 (Table 1). In 2019, the birth rate for Hispanics (regardless of race) was 12.1, while Non-Hispanics was 9.6. Hispanic births represent 30.8 percent of all births in the state.

Table 2 shows the number of live births by age and race of the mother. Overall, 46.8 percent of all births are to women aged 20-29, while 75.9 percent are to women aged 20-34. The highest number of births are to women aged 30-34, representing 29.1 percent of total births.

Table 2 - Florida Resident Births by Age and Race of Mother 2019

Mother's Age	Mother's Race				Total
	White	Black	Other NonWhite	Unknown	
<15	58	42	6	0	106
15-17	1,358	684	105	10	2,157
18-19	4,705	2,260	386	33	7,384
20-24	26,924	10,993	2,100	119	40,136
25-29	44,445	14,258	3,978	200	62,881
30-34	47,210	11,576	5,026	210	64,022
35-39	25,480	6,509	2,902	143	35,034
40-44	5,240	1,695	706	40	7,681
45+	402	131	59	5	597
Unknown	3	7	0	2	12
Total	155,825	48,155	15,268	762	220,010

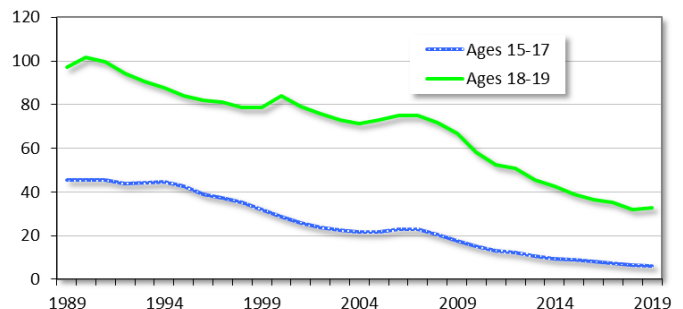
Note: Totals may differ from those in text due to missing data on age and/or race.
*Rate per 1,000 women.

Teen Births

Teen births (to mothers aged 15-19) accounted for 4.3 percent of all births in 2019. These births represented 3.9 percent of births to white mothers and 5.4 percent to nonwhite mothers. Birth rates were higher for nonwhites than whites (19.8 vs 14.6), even though the number of births to teens was more for whites than nonwhites (6,063 vs 3,435).

Teen birth rates are higher for older teens (ages 18-19) than for younger teens (ages 15-17). Prior to 2019, both rates had been trending downward over time, as shown in Figure 2. In 2019 there were 6.0 births per 1,000 girls aged 15-17 and 32.6 births per 1,000 girls aged 18-19. Since 1989, birth rates hit a high of 45.7 for girls aged 15-17 in 1989 and 101.7 for girls aged 18-19 in 1990.

Figure 2 - Florida Teen Birth Rate* by Age



Unwed Mothers

In general, the percent of live births to unwed Florida mothers had been steadily increasing, representing 15.0 percent of all births in 1970, 22.9 percent in 1980, 31.7 percent in 1990, 38.2 percent in 2000, and 47.5 percent in 2010. Over the course of this decade this percentage appears to have peaked early in the decade and has fallen slowly to 46.3 percent in 2018, before increasing slightly to 46.6 percent in 2019. For white mothers, 41.7 percent of live births was to an unwed woman, while for nonwhite mothers this percentage was 58.5 percent.

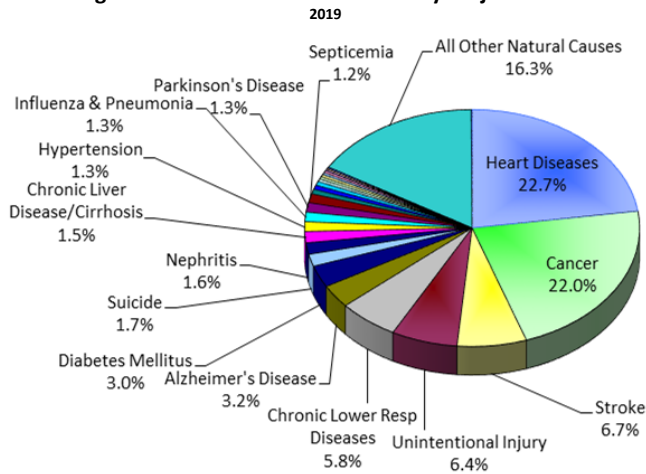
Florida Deaths

There were 206,975 resident deaths in Florida in 2019, an increase of 0.7 percent from 205,461 in 2018. As shown in Table 3, male death rates typically equal or exceed female death rates by age group. Also, for most age groups, nonwhite death rates equal or exceed the death rates for whites. The exceptions are the 85+ age groups for males; and the 20-24, 25-34 and 85+ age groups for females.

The two major causes of deaths in Florida in 2019 were heart diseases and cancer (Figure 3), representing 44.7 percent of all deaths in the state. The number of deaths due to these two major causes typically increases as the population ages. However, the percentage of deaths due to heart diseases and cancer relative to the total number of deaths by age group is greatest for the 65-74 year old group (53.8%).

For residents between age 1 and 44, unintentional injury (accidents) was the primary cause of death, representing 39.8% of the deaths in this age group.

Figure 3 - Florida Resident Deaths by Major Cause



Florida Infant Mortality

In 2019, 1,328 babies died prior to their first birthday. The infant death rate was 6.0 deaths per 1,000 live births. Between 1995 and 2008, Florida's infant mortality rate had been hovering between 7.0 and 7.5; however, over the past eight years, the rate has ranged between 6.0 and 6.2. In 1980 the rate was 14.6, higher than the 1990 rate of 9.6.

Figure 4 displays decade data (1960 through 1990) and annual data (1995 through 2019). Through the mid-1990s, infant mortality rates trended downward for both whites and nonwhites. White rates were 7.5 in 1990 and 4.4 in 2019, while nonwhite rates were 16.0 in 1990 and 10.0 in 2019. The Infant mortality rate for nonwhites is more than double the rate for whites. As shown in Figure 4, nonwhite infant mortality rates have consistently exceeded the rates for whites.

Figure 4 - Florida Infant Mortality Rate (per 1,000 Live Births)

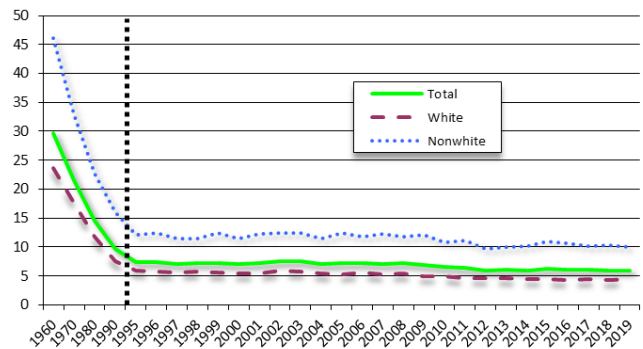


Table 3 - Florida Resident Deaths by Age and Race

Age	White Males		White Females		Nonwhite Males		Nonwhite Females		Total*	
	Number	Death Rate**	Number	Death Rate**	Number	Death Rate**	Number	Death Rate**	Number	Death Rate**
<1	399	5.06	282	3.75	361	11.30	271	8.84	1,328	6.13
1-4	73	0.22	61	0.20	57	0.39	31	0.22	222	0.24
5-9	36	0.09	43	0.11	34	0.18	28	0.16	141	0.12
10-14	66	0.15	41	0.10	37	0.20	18	0.10	163	0.14
15-19	268	0.61	96	0.23	176	0.99	56	0.32	598	0.50
20-24	636	1.37	227	0.52	311	1.68	91	0.50	1,266	1.00
25-34	2,018	1.93	995	1.01	758	2.03	315	0.83	4,088	1.47
35-44	2,718	2.80	1,482	1.55	850	2.81	543	1.61	5,600	2.18
45-54	5,253	4.91	3,091	2.84	1,397	5.08	1,035	3.32	10,783	3.93
55-64	12,926	11.64	7,865	6.46	2,902	12.24	2,118	7.47	25,859	9.08
65-74	19,990	20.85	13,453	12.22	3,300	22.80	2,601	14.07	39,389	16.48
75-84	24,904	44.10	20,965	31.36	2,861	45.65	3,003	34.55	51,771	37.44
85+	25,250	121.07	35,098	113.63	1,917	109.25	3,483	102.20	65,767	115.57
Unknown	0		0		0		0		0	
Total	94,537	11.71	83,699	10.00	14,961	6.44	13,593	5.43	206,975	9.73

*Totals may not add due to unknown. **Death Rate per 1,000 population. Data in this report are from the Florida Vital Statistics Annual Report 2019, Florida Department of Health, <http://www.flpublichealth.com/VSBOOK/pdf/2019/vscomp.pdf>; Florida Department of Health, CHARTS system.